

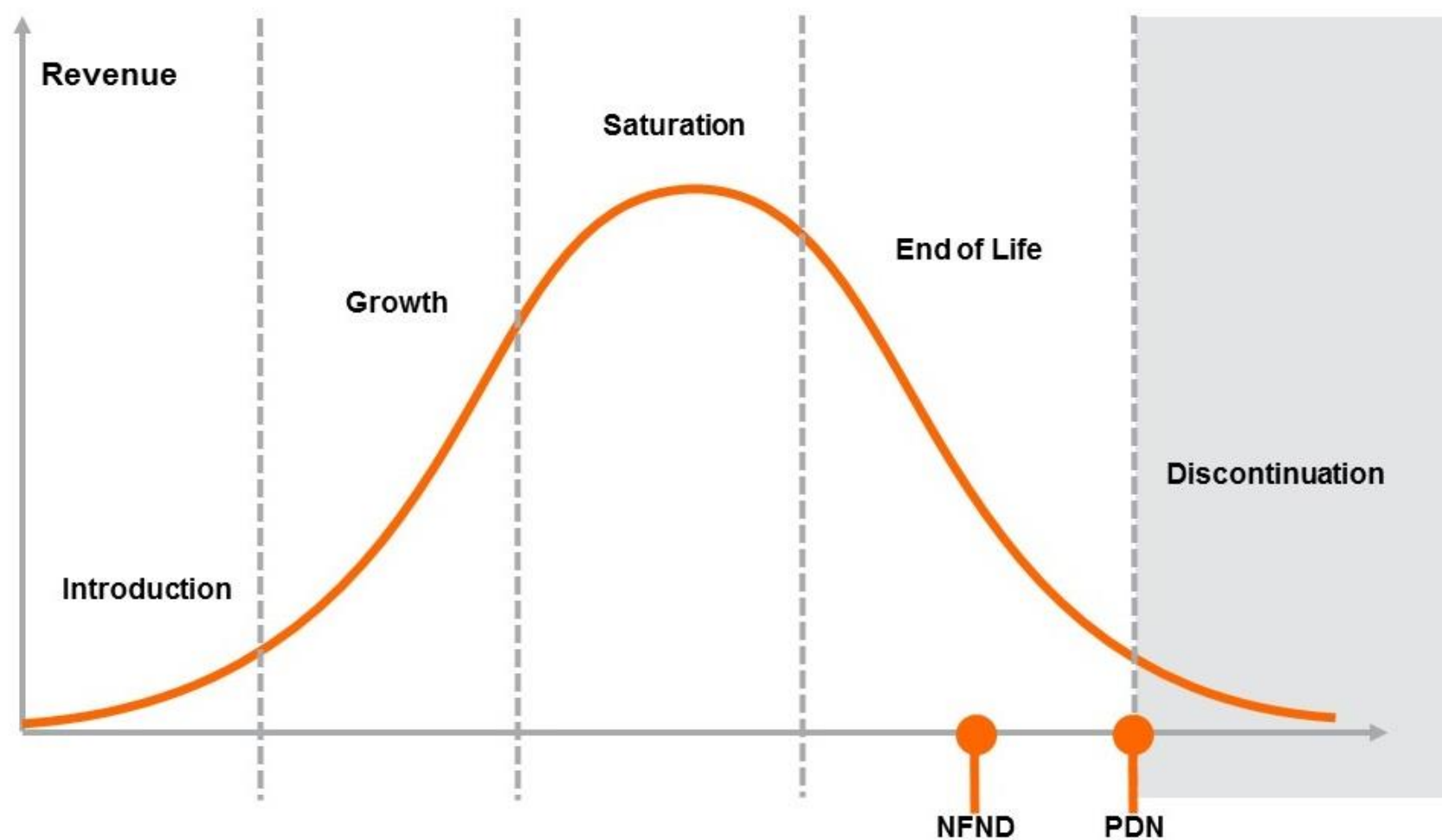
Light is OSRAM

Product Or Individual Q-Code Discontinuation (acc. JEDEC J-STD-048)  
OS-PDN-2019-043

15 July 2019

Last order: 15 January 2020

Last delivery: 15 July 2020



Please direct your feedback to your local Sales office.

DISCONTINUED				NEW (REPLACEMENT)		
Device	Ordering Code	Brand	Reason for discontinuation	Device	Datasheet Ordering Code	Brand
<b>LA G5AP</b>						
LA G5AP-CXDX-24-1-100-R18-Z	Q65111A1020	Advanced Power TOPLED	Portfolio clearance	LA G6SP.01-8D6F-24-G3R3-140-R18-Z	Q65112A5628	Advanced Power TOPLED
LA G5AP-CZDZ-24-1-100-R18-Z	Q65111A1021	Advanced Power TOPLED	Portfolio clearance	LA G6SP.01-8D6F-24-G3R3-140-R18-Z	Q65112A5628	Advanced Power TOPLED
LA G5AP-DXDY-23-1-100-R18-Z-XX	Q65111A3744	Advanced Power TOPLED	Portfolio clearance	LA G6SP.01-8D6F-24-G3R3-140-R18-Z	Q65112A5628	Advanced Power TOPLED
<b>LA W5SM</b>						
LA W5SM-JXKX-24-1-400-R18-ZG-LM	Q65110A9924	Golden DRAGON	Portfolio clearance	LA H9PP-JXKX-24-1-350-R18-Z	Q65111A4306	OSLON
LA W5SM-JXKX-24-1-400-R18-ZG-LM	Q65110A9924	Golden DRAGON	Portfolio clearance	KR DMLS31.23-5K8L-26-M3W3-700-R18-Z	Q65112A0163	SYNIOS
LA W5SM-JYKX-24-1-400-R18-Z	Q65110A7521	Golden DRAGON	Portfolio clearance	LA H9PP-JXKX-24-1-350-R18-Z	Q65111A4306	OSLON
LA W5SM-JYKX-24-1-400-R18-Z	Q65110A7521	Golden DRAGON	Portfolio clearance	KR DMLS31.23-5K8L-26-M3W3-700-R18-Z	Q65112A0163	SYNIOS
LA W5SM-JYKX-24-1-400-R18-Z-AL	Q65111A3164	Golden DRAGON	Portfolio clearance	LA H9PP-JXKX-24-1-350-R18-Z	Q65111A4306	OSLON
LA W5SM-JYKX-24-1-400-R18-Z-AL	Q65111A3164	Golden DRAGON	Portfolio clearance	KR DMLS31.23-5K8L-26-M3W3-700-R18-Z	Q65112A0163	SYNIOS
LA W5SM-JYKX-24-1-400-R18-Z-HE	Q65112A0715	Golden DRAGON	Portfolio clearance	LA H9PP-JXKX-24-1-350-R18-Z	Q65111A4306	OSLON
LA W5SM-JYKX-24-1-400-R18-Z-HE	Q65112A0715	Golden DRAGON	Portfolio clearance	KR DMLS31.23-5K8L-26-M3W3-700-R18-Z	Q65112A0163	SYNIOS
LA W5SM-JYKX-24-1-400-R18-Z-VL	Q65112A5388	Golden DRAGON	Portfolio clearance	LA H9PP-JXKX-24-1-350-R18-Z	Q65111A4306	OSLON
LA W5SM-JYKX-24-1-400-R18-Z-VL	Q65112A5388	Golden DRAGON	Portfolio clearance	KR DMLS31.23-5K8L-26-M3W3-700-R18-Z	Q65112A0163	SYNIOS
LA W5SM-JYKY-23-1-400-R18-Z	Q65112A2805	Golden DRAGON	Portfolio clearance	LA H9PP-JXKX-24-1-350-R18-Z	Q65111A4306	OSLON
LA W5SM-JYKY-23-1-400-R18-Z	Q65112A2805	Golden DRAGON	Portfolio clearance	KR DMLS31.23-5K8L-26-M3W3-700-R18-Z	Q65112A0163	SYNIOS
LA W5SM-JYKY-24-1-400-R18-Z	Q65111A2606	Golden DRAGON	Portfolio clearance	LA H9PP-JXKX-24-1-350-R18-Z	Q65111A4306	OSLON
LA W5SM-JYKY-24-1-400-R18-Z	Q65111A2606	Golden DRAGON	Portfolio clearance	KR DMLS31.23-5K8L-26-M3W3-700-R18-Z	Q65112A0163	SYNIOS

DISCONTINUED				NEW (REPLACEMENT)		
Device	Ordering Code	Brand	Reason for discontinuation	Device	Datasheet Ordering Code	Brand
LA W5SM-JZKX-24-1-400-R18-Z-HAN	Q65111A6365	Golden DRAGON	Portfolio clearance	LA H9PP-JXKX-24-1-350-R18-Z	Q65111A4306	OSLON
LA W5SM-JZKX-24-1-400-R18-Z-HAN	Q65111A6365	Golden DRAGON	Portfolio clearance	KR DMLS31.23-5K8L-26-M3W3-700-R18-Z	Q65112A0163	SYNIOS
LA W5SM-JZKX-24-1-400-R18-Z-HE	Q65111A2151	Golden DRAGON	Portfolio clearance	LA H9PP-JXKX-24-1-350-R18-Z	Q65111A4306	OSLON
LA W5SM-JZKX-24-1-400-R18-Z-HE	Q65111A2151	Golden DRAGON	Portfolio clearance	KR DMLS31.23-5K8L-26-M3W3-700-R18-Z	Q65112A0163	SYNIOS
LA W5SM-JZKY-24-1-400-R18-Z-AL	Q65111A2214	Golden DRAGON	Portfolio clearance	LA H9PP-JXKX-24-1-350-R18-Z	Q65111A4306	OSLON
LA W5SM-JZKY-24-1-400-R18-Z-AL	Q65111A2214	Golden DRAGON	Portfolio clearance	KR DMLS31.23-5K8L-26-M3W3-700-R18-Z	Q65112A0163	SYNIOS
LA W5SM-JZKY-24-1-400-R18-Z-HE	Q65111A0697	Golden DRAGON	Portfolio clearance	LA H9PP-JXKX-24-1-350-R18-Z	Q65111A4306	OSLON
LA W5SM-JZKY-24-1-400-R18-Z-HE	Q65111A0697	Golden DRAGON	Portfolio clearance	KR DMLS31.23-5K8L-26-M3W3-700-R18-Z	Q65112A0163	SYNIOS
LA W5SM-JZKY-24-1-400-R18-Z-VAR	Q65111A2117	Golden DRAGON	Portfolio clearance	LA H9PP-JXKX-24-1-350-R18-Z	Q65111A4306	OSLON
LA W5SM-JZKY-24-1-400-R18-Z-VAR	Q65111A2117	Golden DRAGON	Portfolio clearance	KR DMLS31.23-5K8L-26-M3W3-700-R18-Z	Q65112A0163	SYNIOS
LA W5SM-JZKY-24-1-400-R18-Z-VEN	Q65111A7101	Golden DRAGON	Portfolio clearance	LA H9PP-JXKX-24-1-350-R18-Z	Q65111A4306	OSLON
LA W5SM-JZKY-24-1-400-R18-Z-VEN	Q65111A7101	Golden DRAGON	Portfolio clearance	KR DMLS31.23-5K8L-26-M3W3-700-R18-Z	Q65112A0163	SYNIOS
LA W5SM-JZKY-24-1-400-R18-Z-VL	Q65111A0809	Golden DRAGON	Portfolio clearance	LA H9PP-JXKX-24-1-350-R18-Z	Q65111A4306	OSLON
LA W5SM-JZKY-24-1-400-R18-Z-VL	Q65111A0809	Golden DRAGON	Portfolio clearance	KR DMLS31.23-5K8L-26-M3W3-700-R18-Z	Q65112A0163	SYNIOS
LA W5SM-JZKY-24-1-400-R18-Z-XX	Q65111A2848	Golden DRAGON	Portfolio clearance	LA H9PP-JXKX-24-1-350-R18-Z	Q65111A4306	OSLON
LA W5SM-JZKY-24-1-400-R18-Z-XX	Q65111A2848	Golden DRAGON	Portfolio clearance	KR DMLS31.23-5K8L-26-M3W3-700-R18-Z	Q65112A0163	SYNIOS
LA W5SM-KXKY-24-1-400-R18-Z-VAR	Q65111A4708	Golden DRAGON	Portfolio clearance	LA H9PP-JXKX-24-1-350-R18-Z	Q65111A4306	OSLON
LA W5SM-KXKY-24-1-400-R18-Z-VAR	Q65111A4708	Golden DRAGON	Portfolio clearance	KR DMLS31.23-5K8L-26-M3W3-700-R18-Z	Q65112A0163	SYNIOS
LA W5SM-KXKZ-24-1-400-R18-Z-AL	Q65111A5035	Golden DRAGON	Portfolio clearance	LA H9PP-JXKX-24-1-350-R18-Z	Q65111A4306	OSLON
LA W5SM-KXKZ-24-1-400-R18-Z-AL	Q65111A5035	Golden DRAGON	Portfolio clearance	KR DMLS31.23-5K8L-26-M3W3-700-R18-Z	Q65112A0163	SYNIOS
LA W5SM-KXKZ-24-1-400-R18-Z-HAN	Q65111A5041	Golden DRAGON	Portfolio clearance	LA H9PP-JXKX-24-1-350-R18-Z	Q65111A4306	OSLON

DISCONTINUED				NEW (REPLACEMENT)		
Device	Ordering Code	Brand	Reason for discontinuation	Device	Datasheet Ordering Code	Brand
LA W5SM-KXKZ-24-1-400-R18-Z-HAN	Q65111A5041	Golden DRAGON	Portfolio clearance	KR DMLS31.23-5K8L-26-M3W3-700-R18-Z	Q65112A0163	SYNIOS
LA W5SM-KXKZ-24-1-400-R18-Z-VL	Q65111A5236	Golden DRAGON	Portfolio clearance	LA H9PP-JXKX-24-1-350-R18-Z	Q65111A4306	OSLON
LA W5SM-KXKZ-24-1-400-R18-Z-VL	Q65111A5236	Golden DRAGON	Portfolio clearance	KR DMLS31.23-5K8L-26-M3W3-700-R18-Z	Q65112A0163	SYNIOS
<b>LB E67C</b>						
LB E67C-Q1R2-35-1-30-R18-Z	Q65110A9138	Power TOPLED	Portfolio clearance	LB E6SG-T2V1-35-46-30-R18-Z	Q65112A2449	Power TOPLED
LB E67C-Q1S2-35-1-30-R18-Z	Q65110A9140	Power TOPLED	Portfolio clearance	LB E6SG-T2V1-35-46-30-R18-Z	Q65112A2449	Power TOPLED
LB E67C-Q2R2-34-1-30-R18-Z	Q65110A5453	Power TOPLED	Portfolio clearance	LB E6SG-T2V1-35-46-30-R18-Z	Q65112A2449	Power TOPLED
LB E67C-Q2S1-35-1-30-R18-Z	Q65110A3172	Power TOPLED	Portfolio clearance	LB E6SG-T2V1-35-46-30-R18-Z	Q65112A2449	Power TOPLED
LB E67C-Q2S1-35-1-30-R18-Z-F	Q65110A4996	Power TOPLED	Portfolio clearance	LB E6SG-T2V1-35-46-30-R18-Z	Q65112A2449	Power TOPLED
LB E67C-Q2S1-35-34-30-R18-ZH	Q65110A6876	Power TOPLED	Portfolio clearance	LB E6SG-T2V1-35-46-30-R18-Z	Q65112A2449	Power TOPLED
LB E67C-Q2S1-35-34-30-R18-Z-VIS	Q65110A8744	Power TOPLED	Portfolio clearance	LB E6SG-T2V1-35-46-30-R18-Z	Q65112A2449	Power TOPLED
LB E67C-R1R2-35-34-30-R18-Z-HE	Q65112A0868	Power TOPLED	Portfolio clearance	LB E6SG-T2V1-35-46-30-R18-Z	Q65112A2449	Power TOPLED
LB E67C-R1S2-34-1-30-R18-Z	Q65110A7053	Power TOPLED	Portfolio clearance	LB E6SG-T2V1-35-46-30-R18-Z	Q65112A2449	Power TOPLED
LB E67C-R1S2-34-1-30-R18-Z-DL	Q65110A6174	Power TOPLED	Portfolio clearance	LB E6SG-T2V1-35-46-30-R18-Z	Q65112A2449	Power TOPLED
LB E67C-R1S2-35-1-30-R18-Z	Q65110A9141	Power TOPLED	Portfolio clearance	LB E6SG-T2V1-35-46-30-R18-Z	Q65112A2449	Power TOPLED
LB E67C-R2-4-1-30-R18-Z-XX	Q65110A7559	Power TOPLED	Portfolio clearance	LB E6SG-T2V1-35-46-30-R18-Z	Q65112A2449	Power TOPLED
LB E67C-R2S1-34-1-30-R18-Z	Q65110A6363	Power TOPLED	Portfolio clearance	LB E6SG-T2V1-35-46-30-R18-Z	Q65112A2449	Power TOPLED
LB E67C-R2S1-35-1-30-R18-Z	Q65110A3679	Power TOPLED	Portfolio clearance	LB E6SG-T2V1-35-46-30-R18-Z	Q65112A2449	Power TOPLED
LB E67C-R2S2-35-34-30-R18-Z-MM	Q65110A6362	Power TOPLED	Portfolio clearance	LB E6SG-T2V1-35-46-30-R18-Z	Q65112A2449	Power TOPLED
LB E67C-R2T1-35-1-30-R18-Z	Q65110A3564	Power TOPLED	Portfolio clearance	LB E6SG-T2V1-35-46-30-R18-Z	Q65112A2449	Power TOPLED
LB E67C-R2T1-35-34-30-R18-Z-P	Q65110A4236	Power TOPLED	Portfolio clearance	LB E6SG-T2V1-35-46-30-R18-Z	Q65112A2449	Power TOPLED



DISCONTINUED				NEW (REPLACEMENT)		
Device	Ordering Code	Brand	Reason for discontinuation	Device	Datasheet Ordering Code	Brand
LB E67C-R2T1-45-1-30-R18-Z	Q65110A3984	Power TOPLED	Portfolio clearance	LB E6SG-T2V1-35-46-30-R18-Z	Q65112A2449	Power TOPLED
<b>LB W5SM</b>						
LB W5SM-FZGZ-35-0-350-R18-Z	Q65110A8887	Golden DRAGON	Portfolio clearance	LB CRBP-HYJZ-46-8E8F-350-S	Q65112A6186	OSLON
LB W5SM-FZHX-34-0-350-R18-Z	Q65110A9262	Golden DRAGON	Portfolio clearance	LB CRBP-HYJZ-46-8E8F-350-S	Q65112A6186	OSLON
LB W5SM-FZHX-35-0-350-R18-Z	Q65110A9221	Golden DRAGON	Portfolio clearance	LB CRBP-HYJZ-46-8E8F-350-S	Q65112A6186	OSLON
LB W5SM-GXGZ-24-0-350-R18-Z	Q65110A8677	Golden DRAGON	Portfolio clearance	LB CRBP-HYJZ-46-8E8F-350-S	Q65112A6186	OSLON
LB W5SM-GXGZ-35-0-350-R18-Z-ST2	Q65112A6173	Golden DRAGON	Portfolio clearance	LB CRBP-HYJZ-46-8E8F-350-S	Q65112A6186	OSLON
LB W5SM-GXGZ-35-0-350-R18-Z-STA	Q65111A5488	Golden DRAGON	Portfolio clearance	LB CRBP-HYJZ-46-8E8F-350-S	Q65112A6186	OSLON
LB W5SM-GYHX-45-0-350-R18-Z-XX	Q65111A1368	Golden DRAGON	Portfolio clearance	LB CRBP-HYJZ-46-8E8F-350-S	Q65112A6186	OSLON
<b>LCW G5GP</b>						
LCW G5GP-FYGY-5R8T-0-100-R18-Z	Q65110A9079	Advanced Power TOPLED	Portfolio clearance	LCW G6CP-DAFA-4R9T-0-140-R18-Z	Q65111A0079	Advanced Power TOPLED
LCW G5GP-FZGY-6O7Q-0-100-Z-CK	Q65111A3952	Advanced Power TOPLED	Portfolio clearance	LCW G6CP-DAFA-4O9Q-0-140-R18-Z	Q65111A0083	Advanced Power TOPLED
LCW G5GP-FZGY-6R7T-0-100-Z-CK	Q65111A3953	Advanced Power TOPLED	Portfolio clearance	LCW G6CP-DAFA-4R9T-0-140-R18-Z	Q65111A0079	Advanced Power TOPLED
LCW G5GP-FZGY-6S7T-0-100-Z-XX	Q65111A4445	Advanced Power TOPLED	Portfolio clearance	LCW G6CP-DAFA-4R9T-0-140-R18-Z	Q65111A0079	Advanced Power TOPLED
LCW G5GP-FZGY-6U8W-0-100-Z-CK	Q65111A3954	Advanced Power TOPLED	Portfolio clearance	LCW G6CP-DAFA-4U9X-0-140-R18-Z	Q65111A0080	Advanced Power TOPLED
LCW G5GP-FZHX-5L7N-0-100-R18-Z	Q65110A9081	Advanced Power TOPLED	Portfolio clearance	LCW G6CP-DAFA-4L8N-0-140-R18-Z	Q65111A0082	Advanced Power TOPLED
LCW G5GP-FZHX-5N8O-0-100-R18-Z	Q65111A0078	Advanced Power TOPLED	Portfolio clearance	LCW G6CP-DAFA-4L8N-0-140-R18-Z	Q65111A0082	Advanced Power TOPLED
LCW G5GP-FZHY-5O8Q-0-100-R18-Z-XX	Q65111A0973	Advanced Power TOPLED	Portfolio clearance	LCW G6CP-DAFA-4O9Q-0-140-R18-Z	Q65111A0083	Advanced Power TOPLED
LCW G5GP-FZHY-5R8T-0-100-R18-Z	Q65110A9866	Advanced Power TOPLED	Portfolio clearance	LCW G6CP-DAFA-4R9T-0-140-R18-Z	Q65111A0079	Advanced Power TOPLED
LCW G5GP-FZHY-6S8T-0-100-R18-Z	Q65111A1249	Advanced Power TOPLED	Portfolio clearance	LCW G6CP-DAFA-4R9T-0-140-R18-Z	Q65111A0079	Advanced Power TOPLED
LCW G5GP-GUJP-6L8N-K-100-Z-DA	Q65111A1694	Advanced Power TOPLED	Portfolio clearance	LCW G6CP-DAFA-4L8N-0-140-R18-Z	Q65111A0082	Advanced Power TOPLED

DISCONTINUED				NEW (REPLACEMENT)		
Device	Ordering Code	Brand	Reason for discontinuation	Device	Datasheet Ordering Code	Brand
LCW G5GP-GXGY-5L7N-0-100-R18-Z	Q65111A2112	Advanced Power TOPLED	Portfolio clearance	LCW G6CP-DAFA-4L8N-0-140-R18-Z	Q65111A0082	Advanced Power TOPLED
LCW G5GP-GXGZ-5R8T-0-100-R18-Z	Q65111A0025	Advanced Power TOPLED	Portfolio clearance	LCW G6CP-DAFA-4R9T-0-140-R18-Z	Q65111A0079	Advanced Power TOPLED
LCW G5GP-GXGZ-6L7N-0-100-Z-CK	Q65111A3951	Advanced Power TOPLED	Portfolio clearance	LCW G6CP-DAFA-4L8N-0-140-R18-Z	Q65111A0082	Advanced Power TOPLED
LCW G5GP-GXGZ-6M7N-0-100-R18-ZTC-XX	Q65111A0385	Advanced Power TOPLED	Portfolio clearance	LCW G6CP-DAFA-4L8N-0-140-R18-Z	Q65111A0082	Advanced Power TOPLED
LCW G5GP-GXGZ-6R7S-0-100-R18-ZT-XX	Q65111A0631	Advanced Power TOPLED	Portfolio clearance	LCW G6CP-DAFA-4R9T-0-140-R18-Z	Q65111A0079	Advanced Power TOPLED
LCW G5GP-GXGZ-6R7T-0-100-R18-Z-LM	Q65111A0732	Advanced Power TOPLED	Portfolio clearance	LCW G6CP-DAFA-4R9T-0-140-R18-Z	Q65111A0079	Advanced Power TOPLED
LCW G5GP-GXHX-5L7N-0-100-R18-Z	Q65111A0448	Advanced Power TOPLED	Portfolio clearance	LCW G6CP-DAFA-4L8N-0-140-R18-Z	Q65111A0082	Advanced Power TOPLED
LCW G5GP-GXHX-5L7N-0-100-R18-Z-LM	Q65111A1693	Advanced Power TOPLED	Portfolio clearance	LCW G6CP-DAFA-4L8N-0-140-R18-Z	Q65111A0082	Advanced Power TOPLED
LCW G5GP-GXHY-5L7M-0-100-R18-Z-XX	Q65111A1093	Advanced Power TOPLED	Portfolio clearance	LCW G6CP-DAFA-4L8N-0-140-R18-Z	Q65111A0082	Advanced Power TOPLED
LCW G5GP-GXHY-5R7S-0-100-R18-Z-XX	Q65111A1092	Advanced Power TOPLED	Portfolio clearance	LCW G6CP-DAFA-4R9T-0-140-R18-Z	Q65111A0079	Advanced Power TOPLED
<b>LCW W5SM</b>						
LCW W5SM-HZKY-6R7S-0-350-R18-Z-XX	Q65112A8213	Golden DRAGON	Portfolio clearance	LUW HWQP-5N8N-ebvF46fcbB46-8E8H-1A-S	Q65112A6099	OSLON
LCW W5SM-JXKX-4R9T-0-350-R18-ZG-HE	Q65110A8237	Golden DRAGON	Portfolio clearance	LUW HWQP-5N8N-ebvF46fcbB46-8E8H-1A-S	Q65112A6099	OSLON
LCW W5SM-JXKX-4U9X-0-350-R18-Z	Q65110A9692	Golden DRAGON	Portfolio clearance	LUW HWQP-5N8N-ebvF46fcbB46-8E8H-1A-S	Q65112A6099	OSLON
LCW W5SM-JXKY-4O9Q-0-350-R18-Z	Q65110A9681	Golden DRAGON	Portfolio clearance	LUW HWQP-5N8N-ebvF46fcbB46-8E8H-1A-S	Q65112A6099	OSLON
LCW W5SM-JYKX-6Q7R-0-350-R18-ZG-HE	Q65110A9993	Golden DRAGON	Portfolio clearance	LUW HWQP-5N8N-ebvF46fcbB46-8E8H-1A-S	Q65112A6099	OSLON
LCW W5SM-JYKY-4L8N-0-350-R18-Z	Q65110A9694	Golden DRAGON	Portfolio clearance	LUW HWQP-5N8N-ebvF46fcbB46-8E8H-1A-S	Q65112A6099	OSLON
LCW W5SM-JYKY-4L8N-0-350-R18-Z-HE	Q65112A0720	Golden DRAGON	Portfolio clearance	LUW HWQP-5N8N-ebvF46fcbB46-8E8H-1A-S	Q65112A6099	OSLON
LCW W5SM-JYKY-4R9T-0-350-R18-Z	Q65110A9693	Golden DRAGON	Portfolio clearance	LUW HWQP-5N8N-ebvF46fcbB46-8E8H-1A-S	Q65112A6099	OSLON
LCW W5SM-JYKZ-4J8K-0-350-R18-Z	Q65110A9698	Golden DRAGON	Portfolio clearance	LUW HWQP-5N8N-ebvF46fcbB46-8E8H-1A-S	Q65112A6099	OSLON
LCW W5SM-JZKX-5S7T-0-350-R18-Z-XX	Q65111A1689	Golden DRAGON	Portfolio clearance	LUW HWQP-5N8N-ebvF46fcbB46-8E8H-1A-S	Q65112A6099	OSLON

DISCONTINUED				NEW (REPLACEMENT)		
Device	Ordering Code	Brand	Reason for discontinuation	Device	Datasheet Ordering Code	Brand
LCW W5SM-JZKX-6R7T-0-350-R18-ZG-LM	Q65111A3074	Golden DRAGON	Portfolio clearance	LUW HWQP-5N8N-ebvF46fcbB46-8E8H-1A-S	Q65112A6099	OSLON
LCW W5SM-JZKY-6R7T-0-350-R18-Z-HE	Q65111A2223	Golden DRAGON	Portfolio clearance	LUW HWQP-5N8N-ebvF46fcbB46-8E8H-1A-S	Q65112A6099	OSLON
LCW W5SM-KXKY-5S6U-0-350-R18-T-Z-SF	Q65111A9071	Golden DRAGON	Portfolio clearance	LUW HWQP-5N8N-ebvF46fcbB46-8E8H-1A-S	Q65112A6099	OSLON
LCW W5SM-KXKZ-6M7N-0-350-R18-IND	Q65111A3959	Golden DRAGON	Portfolio clearance	LUW HWQP-5N8N-ebvF46fcbB46-8E8H-1A-S	Q65112A6099	OSLON
<b>LCY W5SM</b>						
LCY W5SM-HZJY-5E-1-350-R18-Z-AL	Q65111A0481	Golden DRAGON	Portfolio clearance	LCY H9PP-7J6K-5F5G-1-350-R18-Z	Q65111A4118	OSLON
LCY W5SM-HZJY-5E-1-350-R18-Z-AL	Q65111A0481	Golden DRAGON	Portfolio clearance	KY DMLS31.FY-Z8KF6-5F-8E8G-600-S	Q65112A3956	SYNIOS
LCY W5SM-HZJZ-5E-1-350-R18-Z	Q65111A2605	Golden DRAGON	Portfolio clearance	LCY H9PP-7J6K-5F5G-1-350-R18-Z	Q65111A4118	OSLON
LCY W5SM-HZJZ-5E-1-350-R18-Z	Q65111A2605	Golden DRAGON	Portfolio clearance	KY DMLS31.FY-Z8KF6-5F-8E8G-600-S	Q65112A3956	SYNIOS
LCY W5SM-JXJY-5E-1-350-R18-Z-XX	Q65111A1327	Golden DRAGON	Portfolio clearance	LCY H9PP-7J6K-5F5G-1-350-R18-Z	Q65111A4118	OSLON
LCY W5SM-JXJY-5E-1-350-R18-Z-XX	Q65111A1327	Golden DRAGON	Portfolio clearance	KY DMLS31.FY-Z8KF6-5F-8E8G-600-S	Q65112A3956	SYNIOS
LCY W5SM-JXJZ-5E-1-350-R18-Z	Q65111A1987	Golden DRAGON	Portfolio clearance	LCY H9PP-7J6K-5F5G-1-350-R18-Z	Q65111A4118	OSLON
LCY W5SM-JXJZ-5E-1-350-R18-Z	Q65111A1987	Golden DRAGON	Portfolio clearance	KY DMLS31.FY-Z8KF6-5F-8E8G-600-S	Q65112A3956	SYNIOS
LCY W5SM-JXJZ-5E-1-350-R18-ZI-AL	Q65112A5392	Golden DRAGON	Portfolio clearance	LCY H9PP-7J6K-5F5G-1-350-R18-Z	Q65111A4118	OSLON
LCY W5SM-JXJZ-5E-1-350-R18-ZI-AL	Q65112A5392	Golden DRAGON	Portfolio clearance	KY DMLS31.FY-Z8KF6-5F-8E8G-600-S	Q65112A3956	SYNIOS
LCY W5SM-JXJZ-5E-1-350-R18-Z-ST1	Q65111A9828	Golden DRAGON	Portfolio clearance	LCY H9PP-7J6K-5F5G-1-350-R18-Z	Q65111A4118	OSLON
LCY W5SM-JXJZ-5E-1-350-R18-Z-ST1	Q65111A9828	Golden DRAGON	Portfolio clearance	KY DMLS31.FY-Z8KF6-5F-8E8G-600-S	Q65112A3956	SYNIOS
LCY W5SM-JXJZ-5E-1-350-R18-Z-ST2	Q65112A6126	Golden DRAGON	Portfolio clearance	LCY H9PP-7J6K-5F5G-1-350-R18-Z	Q65111A4118	OSLON
LCY W5SM-JXJZ-5E-1-350-R18-Z-ST2	Q65112A6126	Golden DRAGON	Portfolio clearance	KY DMLS31.FY-Z8KF6-5F-8E8G-600-S	Q65112A3956	SYNIOS
LCY W5SM-JXJZ-5E-1-350-R18-Z-STA	Q65111A9827	Golden DRAGON	Portfolio clearance	LCY H9PP-7J6K-5F5G-1-350-R18-Z	Q65111A4118	OSLON
LCY W5SM-JXJZ-5E-1-350-R18-Z-STA	Q65111A9827	Golden DRAGON	Portfolio clearance	KY DMLS31.FY-Z8KF6-5F-8E8G-600-S	Q65112A3956	SYNIOS



DISCONTINUED				NEW (REPLACEMENT)		
Device	Ordering Code	Brand	Reason for discontinuation	Device	Datasheet Ordering Code	Brand
LCY W5SM-JYKX-5E-1-350-R18-Z-ST1	Q65111A9826	Golden DRAGON	Portfolio clearance	LCY H9PP-7J6K-5F5G-1-350-R18-Z	Q65111A4118	OSLON
LCY W5SM-JYKX-5E-1-350-R18-Z-ST1	Q65111A9826	Golden DRAGON	Portfolio clearance	KY DMLS31.FY-Z8KF6-5F-8E8G-600-S	Q65112A3956	SYNIOS
LCY W5SM-JYKX-5E-1-350-R18-Z-ST2	Q65112A6125	Golden DRAGON	Portfolio clearance	LCY H9PP-7J6K-5F5G-1-350-R18-Z	Q65111A4118	OSLON
LCY W5SM-JYKX-5E-1-350-R18-Z-ST2	Q65112A6125	Golden DRAGON	Portfolio clearance	KY DMLS31.FY-Z8KF6-5F-8E8G-600-S	Q65112A3956	SYNIOS
LCY W5SM-JYKX-5E-1-350-R18-Z-STA	Q65111A9825	Golden DRAGON	Portfolio clearance	LCY H9PP-7J6K-5F5G-1-350-R18-Z	Q65111A4118	OSLON
LCY W5SM-JYKX-5E-1-350-R18-Z-STA	Q65111A9825	Golden DRAGON	Portfolio clearance	KY DMLS31.FY-Z8KF6-5F-8E8G-600-S	Q65112A3956	SYNIOS
LCY W5SM-JYKX-5E-1-350-R18-Z-XX	Q65111A3885	Golden DRAGON	Portfolio clearance	LCY H9PP-7J6K-5F5G-1-350-R18-Z	Q65111A4118	OSLON
LCY W5SM-JYKX-5E-1-350-R18-Z-XX	Q65111A3885	Golden DRAGON	Portfolio clearance	KY DMLS31.FY-Z8KF6-5F-8E8G-600-S	Q65112A3956	SYNIOS
<b>LD W5SM</b>						
LD W5SM-4S4T-35-0-350-R18-Z	Q65110A9216	Golden DRAGON	Portfolio clearance	LB CRBP-HYJZ-46-8E8F-350-S	Q65112A6186	OSLON
<b>LMW G5AP</b>						
LMW G5AP-5D7D-N5N7-E-LM-100-R18-ZD-XX	Q65111A1246	Advanced Power TOPLED	Portfolio clearance			
LMW G5AP-7C8D-NZN6-DF-LH-100-R18-Z	Q65110A9418	Advanced Power TOPLED	Portfolio clearance			
<b>LP E675</b>						
LP E675-P1Q2-25-0-50-R18-Z	Q65110A2334	Power TOPLED	Portfolio clearance	LP T676-L2N1-25-0-20-R18-Z	Q65112A6087	TOPLED
LP E675-P1Q2-25-0-50-R18-Z-F	Q65110A5000	Power TOPLED	Portfolio clearance	LP T676-L2N1-25-0-20-R18-Z	Q65112A6087	TOPLED
LP E675-P1Q2-34-0-50-R18-Z	Q65110A4971	Power TOPLED	Portfolio clearance	LP T676-L2N1-25-0-20-R18-Z	Q65112A6087	TOPLED
LP E675-P2Q2-34-0-50-R18-Z-DL	Q65110A7635	Power TOPLED	Portfolio clearance	LP T676-L2N1-25-0-20-R18-Z	Q65112A6087	TOPLED
LP E675-P2Q2-34-0-50-R18-Z-XX	Q65111A7924	Power TOPLED	Portfolio clearance	LP T676-L2N1-25-0-20-R18-Z	Q65112A6087	TOPLED
LP E675-P2Q2-35-0-50-R18-Z-DL	Q65110A5356	Power TOPLED	Portfolio clearance	LP T676-L2N1-25-0-20-R18-Z	Q65112A6087	TOPLED
LP E675-P2R1-25-0-50-R18-Z	Q65110A7298	Power TOPLED	Portfolio clearance	LP T676-L2N1-25-0-20-R18-Z	Q65112A6087	TOPLED



DISCONTINUED				NEW (REPLACEMENT)		
Device	Ordering Code	Brand	Reason for discontinuation	Device	Datasheet Ordering Code	Brand
LP E675-Q1Q2-25-0-50-R18-Z-VL	Q65110A8267	Power TOPLED	Portfolio clearance	LP T676-L2N1-25-0-20-R18-Z	Q65112A6087	TOPLED
LP E675-Q1Q2-34-0-50-R18-Z	Q65110A8456	Power TOPLED	Portfolio clearance	LP T676-L2N1-25-0-20-R18-Z	Q65112A6087	TOPLED
LP E675-Q1Q2-35-0-50-R18-Z-JC	Q65110A7960	Power TOPLED	Portfolio clearance	LP T676-L2N1-25-0-20-R18-Z	Q65112A6087	TOPLED
LP E675-Q1R1-34-0-50-R18-Z-HE	Q65110A8277	Power TOPLED	Portfolio clearance	LP T676-L2N1-25-0-20-R18-Z	Q65112A6087	TOPLED
<b>LR W5SM</b>						
LR W5SM-HZJZ-1-1-400-R18-Z	Q65111A2604	Golden DRAGON	Portfolio clearance	LR H9PP-HZJZ-1-1-350-R18-Z	Q65111A4286	OSLON
LR W5SM-HZJZ-1-1-400-R18-Z	Q65111A2604	Golden DRAGON	Portfolio clearance	KR DMLS31.23-5K8L-26-M3W3-700-R18-Z	Q65112A0163	SYNIOS
LR W5SM-JXJY-1-1-400-R18-Z-AL	Q65111A8112	Golden DRAGON	Portfolio clearance	LR H9PP-HZJZ-1-1-350-R18-Z	Q65111A4286	OSLON
LR W5SM-JXJY-1-1-400-R18-Z-AL	Q65111A8112	Golden DRAGON	Portfolio clearance	KR DMLS31.23-5K8L-26-M3W3-700-R18-Z	Q65112A0163	SYNIOS
LR W5SM-JXJZ-1-1-400-R18-Z-AL	Q65111A2216	Golden DRAGON	Portfolio clearance	LR H9PP-HZJZ-1-1-350-R18-Z	Q65111A4286	OSLON
LR W5SM-JXJZ-1-1-400-R18-Z-AL	Q65111A2216	Golden DRAGON	Portfolio clearance	KR DMLS31.23-5K8L-26-M3W3-700-R18-Z	Q65112A0163	SYNIOS
LR W5SM-JXJZ-1-1-400-R18-Z-XIN	Q65111A5500	Golden DRAGON	Portfolio clearance	LR H9PP-HZJZ-1-1-350-R18-Z	Q65111A4286	OSLON
LR W5SM-JXJZ-1-1-400-R18-Z-XIN	Q65111A5500	Golden DRAGON	Portfolio clearance	KR DMLS31.23-5K8L-26-M3W3-700-R18-Z	Q65112A0163	SYNIOS
LR W5SM-JXJZ-1-1-400-R18-Z-XX	Q65111A7729	Golden DRAGON	Portfolio clearance	LR H9PP-HZJZ-1-1-350-R18-Z	Q65111A4286	OSLON
LR W5SM-JXJZ-1-1-400-R18-Z-XX	Q65111A7729	Golden DRAGON	Portfolio clearance	KR DMLS31.23-5K8L-26-M3W3-700-R18-Z	Q65112A0163	SYNIOS
LR W5SM-JYKX-1-1-400-R18-Z-AL	Q65111A3884	Golden DRAGON	Portfolio clearance	LR H9PP-HZJZ-1-1-350-R18-Z	Q65111A4286	OSLON
LR W5SM-JYKX-1-1-400-R18-Z-AL	Q65111A3884	Golden DRAGON	Portfolio clearance	KR DMLS31.23-5K8L-26-M3W3-700-R18-Z	Q65112A0163	SYNIOS
<b>LT E67C</b>						
LT E67C-T1U2-35-1-30-R18-Z	Q65110A1868	Power TOPLED	Portfolio clearance	LT E6SG-AABB-35-1-30-R18-Z	Q65111A0322	Power TOPLED
LT E67C-T1U2-35-1-30-R18-Z	Q65110A1868	Power TOPLED	Portfolio clearance	LT T67C-S2V1-35-0-20-R18-Z	Q65110A1983	TOPLED
LT E67C-T1V2-35-1-30-R18-Z	Q65110A1982	Power TOPLED	Portfolio clearance	LT E6SG-AABB-35-1-30-R18-Z	Q65111A0322	Power TOPLED

DISCONTINUED				NEW (REPLACEMENT)		
Device	Ordering Code	Brand	Reason for discontinuation	Device	Datasheet Ordering Code	Brand
LT E67C-T1V2-35-1-30-R18-Z	Q65110A1982	Power TOPLED	Portfolio clearance	LT T67C-S2V1-35-0-20-R18-Z	Q65110A1983	TOPLED
LT E67C-T2V1-35-1-30-R18-Z	Q65110A3192	Power TOPLED	Portfolio clearance	LT E6SG-AABB-35-1-30-R18-Z	Q65111A0322	Power TOPLED
LT E67C-T2V1-35-1-30-R18-Z	Q65110A3192	Power TOPLED	Portfolio clearance	LT T67C-S2V1-35-0-20-R18-Z	Q65110A1983	TOPLED
LT E67C-U1V1-35-1-30-R18-Z	Q65111A1024	Power TOPLED	Portfolio clearance	LT E6SG-AABB-35-1-30-R18-Z	Q65111A0322	Power TOPLED
LT E67C-U1V1-35-1-30-R18-Z	Q65111A1024	Power TOPLED	Portfolio clearance	LT T67C-S2V1-35-0-20-R18-Z	Q65110A1983	TOPLED
LT E67C-U1V1-35-34-30-R18-ZH	Q65110A8539	Power TOPLED	Portfolio clearance	LT E6SG-AABB-35-1-30-R18-Z	Q65111A0322	Power TOPLED
LT E67C-U1V1-35-34-30-R18-ZH	Q65110A8539	Power TOPLED	Portfolio clearance	LT T67C-S2V1-35-0-20-R18-Z	Q65110A1983	TOPLED
LT E67C-U1V2-34-34-30-R18-Z	Q65110A7050	Power TOPLED	Portfolio clearance	LT E6SG-AABB-35-1-30-R18-Z	Q65111A0322	Power TOPLED
LT E67C-U1V2-34-34-30-R18-Z	Q65110A7050	Power TOPLED	Portfolio clearance	LT T67C-S2V1-35-0-20-R18-Z	Q65110A1983	TOPLED
LT E67C-U1V2-35-1-30-R18-Z	Q65110A1869	Power TOPLED	Portfolio clearance	LT E6SG-AABB-35-1-30-R18-Z	Q65111A0322	Power TOPLED
LT E67C-U1V2-35-1-30-R18-Z	Q65110A1869	Power TOPLED	Portfolio clearance	LT T67C-S2V1-35-0-20-R18-Z	Q65110A1983	TOPLED
LT E67C-U2V1-35-1-30-R18-Z	Q65110A3692	Power TOPLED	Portfolio clearance	LT E6SG-AABB-35-1-30-R18-Z	Q65111A0322	Power TOPLED
LT E67C-U2V1-35-1-30-R18-Z	Q65110A3692	Power TOPLED	Portfolio clearance	LT T67C-S2V1-35-0-20-R18-Z	Q65110A1983	TOPLED
LT E67C-U2V1-45-1-30-R18-Z	Q65110A6361	Power TOPLED	Portfolio clearance	LT E6SG-AABB-35-1-30-R18-Z	Q65111A0322	Power TOPLED
LT E67C-U2V1-45-1-30-R18-Z	Q65110A6361	Power TOPLED	Portfolio clearance	LT T67C-S2V1-35-0-20-R18-Z	Q65110A1983	TOPLED
LT E67C-U2V1-45-1-30-R18-Z-LM	Q65110A3848	Power TOPLED	Portfolio clearance	LT E6SG-AABB-35-1-30-R18-Z	Q65111A0322	Power TOPLED
LT E67C-U2V1-45-1-30-R18-Z-LM	Q65110A3848	Power TOPLED	Portfolio clearance	LT T67C-S2V1-35-0-20-R18-Z	Q65110A1983	TOPLED
LT E67C-U2V2-35-1-30-R18-Z-MM	Q65110A6360	Power TOPLED	Portfolio clearance	LT E6SG-AABB-35-1-30-R18-Z	Q65111A0322	Power TOPLED
LT E67C-U2V2-35-1-30-R18-Z-MM	Q65110A6360	Power TOPLED	Portfolio clearance	LT T67C-S2V1-35-0-20-R18-Z	Q65110A1983	TOPLED
LT E67C-V1V2-5-1-30-R18-Z-M	Q65111A4498	Power TOPLED	Portfolio clearance	LT E6SG-AABB-35-1-30-R18-Z	Q65111A0322	Power TOPLED
LT E67C-V1V2-5-1-30-R18-Z-M	Q65111A4498	Power TOPLED	Portfolio clearance	LT T67C-S2V1-35-0-20-R18-Z	Q65110A1983	TOPLED

DISCONTINUED				NEW (REPLACEMENT)		
Device	Ordering Code	Brand	Reason for discontinuation	Device	Datasheet Ordering Code	Brand
<b>LT W5SM</b>						
LT W5SM-JXKX-36-0-350-R18-Z	Q65110A8417	Golden DRAGON	Portfolio clearance	KT DMLN31.13-8F5H-36-L6E2-65-S	Q65112A3520	SYNIOS
LT W5SM-JXKX-36-0-350-R18-Z	Q65110A8417	Golden DRAGON	Portfolio clearance	LT CQBP-KYLY-36-8E8G-350-S	Q65112A3581	OSLON
LT W5SM-JYKY-25-0-350-R18-Z	Q65110A9212	Golden DRAGON	Portfolio clearance	KT DMLN31.13-8F5H-36-L6E2-65-S	Q65112A3520	SYNIOS
LT W5SM-JYKY-25-0-350-R18-Z	Q65110A9212	Golden DRAGON	Portfolio clearance	LT CQBP-KYLY-36-8E8G-350-S	Q65112A3581	OSLON
LT W5SM-JYKY-45-0-350-R18-Z-XX	Q65110A9251	Golden DRAGON	Portfolio clearance	KT DMLN31.13-8F5H-36-L6E2-65-S	Q65112A3520	SYNIOS
LT W5SM-JYKY-45-0-350-R18-Z-XX	Q65110A9251	Golden DRAGON	Portfolio clearance	LT CQBP-KYLY-36-8E8G-350-S	Q65112A3581	OSLON
LT W5SM-KXKY-34-0-350-R18-Z	Q65111A3804	Golden DRAGON	Portfolio clearance	KT DMLN31.13-8F5H-36-L6E2-65-S	Q65112A3520	SYNIOS
LT W5SM-KXKY-34-0-350-R18-Z	Q65111A3804	Golden DRAGON	Portfolio clearance	LT CQBP-KYLY-36-8E8G-350-S	Q65112A3581	OSLON
LT W5SM-KXKY-34-0-350-R18-Z-HE	Q65112A1232	Golden DRAGON	Portfolio clearance	KT DMLN31.13-8F5H-36-L6E2-65-S	Q65112A3520	SYNIOS
LT W5SM-KXKY-34-0-350-R18-Z-HE	Q65112A1232	Golden DRAGON	Portfolio clearance	LT CQBP-KYLY-36-8E8G-350-S	Q65112A3581	OSLON
LT W5SM-KXKZ-45-0-350-R18-Z	Q65110A9703	Golden DRAGON	Portfolio clearance	KT DMLN31.13-8F5H-36-L6E2-65-S	Q65112A3520	SYNIOS
LT W5SM-KXKZ-45-0-350-R18-Z	Q65110A9703	Golden DRAGON	Portfolio clearance	LT CQBP-KYLY-36-8E8G-350-S	Q65112A3581	OSLON
<b>LUW G5GP</b>						
LUW G5GP-GXHY-5C6D-0-100-R18-Z-M	Q65111A1538	Advanced Power TOPLED	Portfolio clearance	LUW GVCP-EBFB-GMKM-24E4-140-R18-Z	Q65111A6900	Advanced Power TOPLED
LUW G5GP-GXHY-5C8E-0-100-R18-Z	Q65110A9093	Advanced Power TOPLED	Portfolio clearance	LUW GVCP-EBFB-GMKM-24E4-140-R18-Z	Q65111A6900	Advanced Power TOPLED
LUW G5GP-GYHX-5D8G-0-100-R18-Z	Q65111A0932	Advanced Power TOPLED	Portfolio clearance	LUW GVCP-EBFB-GMKM-24E4-140-R18-Z	Q65111A6900	Advanced Power TOPLED
LUW G5GP-GYHX-6D7G-0-100-Z-CK	Q65111A3913	Advanced Power TOPLED	Portfolio clearance	LUW GVCP-EBFB-GMKM-24E4-140-R18-Z	Q65111A6900	Advanced Power TOPLED
LUW G5GP-GYHY-5C8E-0-100-R18-Z-LM	Q65111A1692	Advanced Power TOPLED	Portfolio clearance	LUW GVCP-EBFB-GMKM-24E4-140-R18-Z	Q65111A6900	Advanced Power TOPLED
LUW G5GP-GYHY-67E-0-100-R18-Z-XX	Q65111A3894	Advanced Power TOPLED	Portfolio clearance	LUW GVCP-EBFB-GMKM-24E4-140-R18-Z	Q65111A6900	Advanced Power TOPLED
LUW G5GP-GYHY-6E7F-0-100-R18-Z-XX	Q65111A3218	Advanced Power TOPLED	Portfolio clearance	LUW GVCP-EBFB-GMKM-24E4-140-R18-Z	Q65111A6900	Advanced Power TOPLED



DISCONTINUED				NEW (REPLACEMENT)		
Device	Ordering Code	Brand	Reason for discontinuation	Device	Datasheet Ordering Code	Brand
LUW G5GP-GZHX-5C6E-0-100-R18-Z-LM	Q65111A0726	Advanced Power TOPLED	Portfolio clearance	LUW GVCP-EBFB-GMKM-24E4-140-R18-Z	Q65111A6900	Advanced Power TOPLED
LUW G5GP-GZHX-5C8E-0-100-R18-Z-XX	Q65110A9462	Advanced Power TOPLED	Portfolio clearance	LUW GVCP-EBFB-GMKM-24E4-140-R18-Z	Q65111A6900	Advanced Power TOPLED
LUW G5GP-GZHX-5E8G-0-100-R18-Z-XX	Q65111A1520	Advanced Power TOPLED	Portfolio clearance	LUW GVCP-EBFB-GMKM-24E4-140-R18-Z	Q65111A6900	Advanced Power TOPLED
LUW G5GP-GZHX-7D8F-0-100-R18-Z-IND	Q65111A5472	Advanced Power TOPLED	Portfolio clearance	LUW GVCP-EBFB-GMKM-24E4-140-R18-Z	Q65111A6900	Advanced Power TOPLED
LUW G5GP-GZHY-5E8G-0-100-R18-Z-XX	Q65110A9884	Advanced Power TOPLED	Portfolio clearance	LUW GVCP-EBFB-GMKM-24E4-140-R18-Z	Q65111A6900	Advanced Power TOPLED
LUW G5GP-GZHY-6E7G-0-100-R18-Z-XX	Q65111A0387	Advanced Power TOPLED	Portfolio clearance	LUW GVCP-EBFB-GMKM-24E4-140-R18-Z	Q65111A6900	Advanced Power TOPLED
LUW G5GP-GZHY-7E8F-0-100-R18-Z-XX	Q65111A1449	Advanced Power TOPLED	Portfolio clearance	LUW GVCP-EBFB-GMKM-24E4-140-R18-Z	Q65111A6900	Advanced Power TOPLED
<b>LUW W5SM</b>						
LUW W5SM-KXLX-5P7R-1-350-R18-Z	Q65111A2585	Golden DRAGON	Portfolio clearance	KW DMLS33.SG-Z6M7-ebvFfcbB46-8E8G-700-S	Q65112A3699	SYNIOS
LUW W5SM-KXLX-5P7R-1-350-R18-Z	Q65111A2585	Golden DRAGON	Portfolio clearance	LUW HWQP-5N8N-ebvF46fcbB46-8E8H-1A-S	Q65112A6099	OSLON
LUW W5SM-KYLX-5D7E-1-350-R33-Z-BSH	Q65112A3986	Golden DRAGON	Portfolio clearance	KW DMLS33.SG-Z6M7-ebvFfcbB46-8E8G-700-S	Q65112A3699	SYNIOS
LUW W5SM-KYLX-5D7E-1-350-R33-Z-BSH	Q65112A3986	Golden DRAGON	Portfolio clearance	LUW HWQP-5N8N-ebvF46fcbB46-8E8H-1A-S	Q65112A6099	OSLON
LUW W5SM-KYLX-5E7F-24E4-350-R18-Z-VL	Q65112A6979	Golden DRAGON	Portfolio clearance	KW DMLS33.SG-Z6M7-ebvFfcbB46-8E8G-700-S	Q65112A3699	SYNIOS
LUW W5SM-KYLX-5E7F-24E4-350-R18-Z-VL	Q65112A6979	Golden DRAGON	Portfolio clearance	LUW HWQP-5N8N-ebvF46fcbB46-8E8H-1A-S	Q65112A6099	OSLON
LUW W5SM-KYLX-5E8F-1-350-R18-Z-BSH	Q65111A0426	Golden DRAGON	Portfolio clearance	KW DMLS33.SG-Z6M7-ebvFfcbB46-8E8G-700-S	Q65112A3699	SYNIOS
LUW W5SM-KYLX-5E8F-1-350-R18-Z-BSH	Q65111A0426	Golden DRAGON	Portfolio clearance	LUW HWQP-5N8N-ebvF46fcbB46-8E8H-1A-S	Q65112A6099	OSLON
LUW W5SM-KYLX-5P6R-24E4-350-S-Z	Q65112A5355	Golden DRAGON	Portfolio clearance	KW DMLS33.SG-Z6M7-ebvFfcbB46-8E8G-700-S	Q65112A3699	SYNIOS
LUW W5SM-KYLX-5P6R-24E4-350-S-Z	Q65112A5355	Golden DRAGON	Portfolio clearance	LUW HWQP-5N8N-ebvF46fcbB46-8E8H-1A-S	Q65112A6099	OSLON
LUW W5SM-KYLX-5P7R-24E4-350-R18-Z	Q65112A0246	Golden DRAGON	Portfolio clearance	KW DMLS33.SG-Z6M7-ebvFfcbB46-8E8G-700-S	Q65112A3699	SYNIOS
LUW W5SM-KYLX-5P7R-24E4-350-R18-Z	Q65112A0246	Golden DRAGON	Portfolio clearance	LUW HWQP-5N8N-ebvF46fcbB46-8E8H-1A-S	Q65112A6099	OSLON
LUW W5SM-KYLX-7P7Q-1-350-R18-Z	Q65110A9716	Golden DRAGON	Portfolio clearance	KW DMLS33.SG-Z6M7-ebvFfcbB46-8E8G-700-S	Q65112A3699	SYNIOS



DISCONTINUED				NEW (REPLACEMENT)		
Device	Ordering Code	Brand	Reason for discontinuation	Device	Datasheet Ordering Code	Brand
LUW W5SM-KYLX-7P7Q-1-350-R18-Z	Q65110A9716	Golden DRAGON	Portfolio clearance	LUW HWQP-5N8N-ebvF46fcbB46-8E8H-1A-S	Q65112A6099	OSLON
LUW W5SM-KZLY-5P7R-24E4-350-R18-Z-XX	Q65112A9000	Golden DRAGON	Portfolio clearance	KW DMLS33.SG-Z6M7-ebvFfcbB46-8E8G-700-S	Q65112A3699	SYNIOS
LUW W5SM-KZLY-5P7R-24E4-350-R18-Z-XX	Q65112A9000	Golden DRAGON	Portfolio clearance	LUW HWQP-5N8N-ebvF46fcbB46-8E8H-1A-S	Q65112A6099	OSLON
LUW W5SM-KZLY-6P7Q-0-350-R18-VL	Q65111A2952	Golden DRAGON	Portfolio clearance	KW DMLS33.SG-Z6M7-ebvFfcbB46-8E8G-700-S	Q65112A3699	SYNIOS
LUW W5SM-KZLY-6P7Q-0-350-R18-VL	Q65111A2952	Golden DRAGON	Portfolio clearance	LUW HWQP-5N8N-ebvF46fcbB46-8E8H-1A-S	Q65112A6099	OSLON
LUW W5SM-KZLY-7Q-1-350-R18-Z-AL	Q65112A5728	Golden DRAGON	Portfolio clearance	KW DMLS33.SG-Z6M7-ebvFfcbB46-8E8G-700-S	Q65112A3699	SYNIOS
LUW W5SM-KZLY-7Q-1-350-R18-Z-AL	Q65112A5728	Golden DRAGON	Portfolio clearance	LUW HWQP-5N8N-ebvF46fcbB46-8E8H-1A-S	Q65112A6099	OSLON
<b>LW E6SC</b>						
LW E6SC-U1V1-5K8L-1-30-R18-Z	Q65110A2598	Power TOPLED	Portfolio clearance	LW ETSG-AABB-JKPL-1-30-R18-Z	Q65111A0196	Power TOPLED
LW E6SC-U1V1-5K8L-1-30-R18-Z	Q65110A2598	Power TOPLED	Portfolio clearance	LW E6SG-AABB-JKPL-46-30-R18-Z	Q65112A2036	Power TOPLED
LW E6SC-U1V2-5K7K-34-30-R18-Z	Q65110A8058	Power TOPLED	Portfolio clearance	LW ETSG-AABB-JKPL-1-30-R18-Z	Q65111A0196	Power TOPLED
LW E6SC-U1V2-5K7K-34-30-R18-Z	Q65110A8058	Power TOPLED	Portfolio clearance	LW E6SG-AABB-JKPL-46-30-R18-Z	Q65112A2036	Power TOPLED
LW E6SC-U1V2-5K8L-34-30-R18-Z	Q65110A8864	Power TOPLED	Portfolio clearance	LW ETSG-AABB-JKPL-1-30-R18-Z	Q65111A0196	Power TOPLED
LW E6SC-U1V2-5K8L-34-30-R18-Z	Q65110A8864	Power TOPLED	Portfolio clearance	LW E6SG-AABB-JKPL-46-30-R18-Z	Q65112A2036	Power TOPLED
LW E6SC-U2AA-5K8L-1-30-R18-Z	Q65110A1157	Power TOPLED	Portfolio clearance	LW ETSG-AABB-JKPL-1-30-R18-Z	Q65111A0196	Power TOPLED
LW E6SC-U2AA-5K8L-1-30-R18-Z	Q65110A1157	Power TOPLED	Portfolio clearance	LW E6SG-AABB-JKPL-46-30-R18-Z	Q65112A2036	Power TOPLED
LW E6SC-U2AA-7K7L-1-30-R18-Z	Q65110A7586	Power TOPLED	Portfolio clearance	LW ETSG-AABB-JKPL-1-30-R18-Z	Q65111A0196	Power TOPLED
LW E6SC-U2AA-7K7L-1-30-R18-Z	Q65110A7586	Power TOPLED	Portfolio clearance	LW E6SG-AABB-JKPL-46-30-R18-Z	Q65112A2036	Power TOPLED
LW E6SC-U2AA-7K8K-1-30-R18-Z	Q65110A6864	Power TOPLED	Portfolio clearance	LW ETSG-AABB-JKPL-1-30-R18-Z	Q65111A0196	Power TOPLED
LW E6SC-U2AA-7K8K-1-30-R18-Z	Q65110A6864	Power TOPLED	Portfolio clearance	LW E6SG-AABB-JKPL-46-30-R18-Z	Q65112A2036	Power TOPLED
LW E6SC-U2AA-7L8L-34-30-R18-Z-HE	Q65110A5073	Power TOPLED	Portfolio clearance	LW ETSG-AABB-JKPL-1-30-R18-Z	Q65111A0196	Power TOPLED

DISCONTINUED				NEW (REPLACEMENT)		
Device	Ordering Code	Brand	Reason for discontinuation	Device	Datasheet Ordering Code	Brand
LW E6SC-U2AA-7L8L-34-30-R18-Z-HE	Q65110A5073	Power TOPLED	Portfolio clearance	LW E6SG-AABB-JKPL-46-30-R18-Z	Q65112A2036	Power TOPLED
LW E6SC-U2V2-56L-1-30-R18-Z	Q65110A3028	Power TOPLED	Portfolio clearance	LW ETSG-AABB-JKPL-1-30-R18-Z	Q65111A0196	Power TOPLED
LW E6SC-U2V2-56L-1-30-R18-Z	Q65110A3028	Power TOPLED	Portfolio clearance	LW E6SG-AABB-JKPL-46-30-R18-Z	Q65112A2036	Power TOPLED
LW E6SC-U2V2-5K5L-1-30-R18-Z-B	Q65110A2746	Power TOPLED	Portfolio clearance	LW ETSG-AABB-JKPL-1-30-R18-Z	Q65111A0196	Power TOPLED
LW E6SC-U2V2-5K5L-1-30-R18-Z-B	Q65110A2746	Power TOPLED	Portfolio clearance	LW E6SG-AABB-JKPL-46-30-R18-Z	Q65112A2036	Power TOPLED
LW E6SC-U2V2-5K5L-34-30-R33-Z	Q65110A7397	Power TOPLED	Portfolio clearance	LW ETSG-AABB-JKPL-1-30-R18-Z	Q65111A0196	Power TOPLED
LW E6SC-U2V2-5K5L-34-30-R33-Z	Q65110A7397	Power TOPLED	Portfolio clearance	LW E6SG-AABB-JKPL-46-30-R18-Z	Q65112A2036	Power TOPLED
LW E6SC-U2V2-5L-1-30-R18-Z	Q65110A5411	Power TOPLED	Portfolio clearance	LW ETSG-AABB-JKPL-1-30-R18-Z	Q65111A0196	Power TOPLED
LW E6SC-U2V2-5L-1-30-R18-Z	Q65110A5411	Power TOPLED	Portfolio clearance	LW E6SG-AABB-JKPL-46-30-R18-Z	Q65112A2036	Power TOPLED
LW E6SC-U2V2-6K6L-1-30-R18-Z	Q65110A3298	Power TOPLED	Portfolio clearance	LW ETSG-AABB-JKPL-1-30-R18-Z	Q65111A0196	Power TOPLED
LW E6SC-U2V2-6K6L-1-30-R18-Z	Q65110A3298	Power TOPLED	Portfolio clearance	LW E6SG-AABB-JKPL-46-30-R18-Z	Q65112A2036	Power TOPLED
LW E6SC-U2V2-6K6L-34-30-R18-Z	Q65110A8917	Power TOPLED	Portfolio clearance	LW ETSG-AABB-JKPL-1-30-R18-Z	Q65111A0196	Power TOPLED
LW E6SC-U2V2-6K6L-34-30-R18-Z	Q65110A8917	Power TOPLED	Portfolio clearance	LW E6SG-AABB-JKPL-46-30-R18-Z	Q65112A2036	Power TOPLED
LW E6SC-U2V2-6K7L-1-30-R18-Z	Q65110A3187	Power TOPLED	Portfolio clearance	LW ETSG-AABB-JKPL-1-30-R18-Z	Q65111A0196	Power TOPLED
LW E6SC-U2V2-6K7L-1-30-R18-Z	Q65110A3187	Power TOPLED	Portfolio clearance	LW E6SG-AABB-JKPL-46-30-R18-Z	Q65112A2036	Power TOPLED
LW E6SC-U2V2-6K7L-1-30-R33-Z	Q65110A8022	Power TOPLED	Portfolio clearance	LW ETSG-AABB-JKPL-1-30-R18-Z	Q65111A0196	Power TOPLED
LW E6SC-U2V2-6K7L-1-30-R33-Z	Q65110A8022	Power TOPLED	Portfolio clearance	LW E6SG-AABB-JKPL-46-30-R18-Z	Q65112A2036	Power TOPLED
LW E6SC-U2V2-6L-1-30-R18-Z-XX	Q65111A0474	Power TOPLED	Portfolio clearance	LW ETSG-AABB-JKPL-1-30-R18-Z	Q65111A0196	Power TOPLED
LW E6SC-U2V2-6L-1-30-R18-Z-XX	Q65111A0474	Power TOPLED	Portfolio clearance	LW E6SG-AABB-JKPL-46-30-R18-Z	Q65112A2036	Power TOPLED
LW E6SC-U2V2-7K8K-34-30-R18-Z-HE	Q65110A8716	Power TOPLED	Portfolio clearance	LW ETSG-AABB-JKPL-1-30-R18-Z	Q65111A0196	Power TOPLED
LW E6SC-U2V2-7K8K-34-30-R18-Z-HE	Q65110A8716	Power TOPLED	Portfolio clearance	LW E6SG-AABB-JKPL-46-30-R18-Z	Q65112A2036	Power TOPLED

DISCONTINUED				NEW (REPLACEMENT)		
Device	Ordering Code	Brand	Reason for discontinuation	Device	Datasheet Ordering Code	Brand
LW E6SC-U2V2-8K8L-1-30-R18-Z-XX	Q65110A7615	Power TOPLED	Portfolio clearance	LW ETSG-AABB-JKPL-1-30-R18-Z	Q65111A0196	Power TOPLED
LW E6SC-U2V2-8K8L-1-30-R18-Z-XX	Q65110A7615	Power TOPLED	Portfolio clearance	LW E6SG-AABB-JKPL-46-30-R18-Z	Q65112A2036	Power TOPLED
LW E6SC-U2V2-8K8L-34-30-R18-Z-HE	Q65112A0665	Power TOPLED	Portfolio clearance	LW ETSG-AABB-JKPL-1-30-R18-Z	Q65111A0196	Power TOPLED
LW E6SC-U2V2-8K8L-34-30-R18-Z-HE	Q65112A0665	Power TOPLED	Portfolio clearance	LW E6SG-AABB-JKPL-46-30-R18-Z	Q65112A2036	Power TOPLED
LW E6SC-U2V2-KA-1-30-R18-Z	Q65110A5784	Power TOPLED	Portfolio clearance	LW ETSG-AABB-JKPL-1-30-R18-Z	Q65111A0196	Power TOPLED
LW E6SC-U2V2-KA-1-30-R18-Z	Q65110A5784	Power TOPLED	Portfolio clearance	LW E6SG-AABB-JKPL-46-30-R18-Z	Q65112A2036	Power TOPLED
LW E6SC-U2V2-KA-34-30-R18-ZH	Q65110A6880	Power TOPLED	Portfolio clearance	LW ETSG-AABB-JKPL-1-30-R18-Z	Q65111A0196	Power TOPLED
LW E6SC-U2V2-KA-34-30-R18-ZH	Q65110A6880	Power TOPLED	Portfolio clearance	LW E6SG-AABB-JKPL-46-30-R18-Z	Q65112A2036	Power TOPLED
LW E6SC-U2V2-KB-34-30-R18-ZH	Q65110A6881	Power TOPLED	Portfolio clearance	LW ETSG-AABB-JKPL-1-30-R18-Z	Q65111A0196	Power TOPLED
LW E6SC-U2V2-KB-34-30-R18-ZH	Q65110A6881	Power TOPLED	Portfolio clearance	LW E6SG-AABB-JKPL-46-30-R18-Z	Q65112A2036	Power TOPLED
LW E6SC-V1AA-5K6K-34-30-R33-Z-JC	Q65110A7449	Power TOPLED	Portfolio clearance	LW ETSG-AABB-JKPL-1-30-R18-Z	Q65111A0196	Power TOPLED
LW E6SC-V1AA-5K6K-34-30-R33-Z-JC	Q65110A7449	Power TOPLED	Portfolio clearance	LW E6SG-AABB-JKPL-46-30-R18-Z	Q65112A2036	Power TOPLED
LW E6SC-V1AA-8K8L-34-30-R18-Z-HE	Q65110A6666	Power TOPLED	Portfolio clearance	LW ETSG-AABB-JKPL-1-30-R18-Z	Q65111A0196	Power TOPLED
LW E6SC-V1AA-8K8L-34-30-R18-Z-HE	Q65110A6666	Power TOPLED	Portfolio clearance	LW E6SG-AABB-JKPL-46-30-R18-Z	Q65112A2036	Power TOPLED
LW E6SC-V1V2-6K6L-1-30-R18-Z	Q65110A8574	Power TOPLED	Portfolio clearance	LW ETSG-AABB-JKPL-1-30-R18-Z	Q65111A0196	Power TOPLED
LW E6SC-V1V2-6K6L-1-30-R18-Z	Q65110A8574	Power TOPLED	Portfolio clearance	LW E6SG-AABB-JKPL-46-30-R18-Z	Q65112A2036	Power TOPLED
<b>LW W5SM</b>						
LW W5SM-JYKY-JKQL-1-350-R18-Z	Q65111A2601	Golden DRAGON	Portfolio clearance	KW DMLS33.SG-Z6M7-ebvFfcbB46-8E8G-700-S	Q65112A3699	SYNIOS
LW W5SM-JYKY-JKQL-1-350-R18-Z	Q65111A2601	Golden DRAGON	Portfolio clearance	LUW HWQP-5N8N-ebvF46fcbB46-8E8H-1A-S	Q65112A6099	OSLON
LW W5SM-JYKY-LKML-1-350-R18-Z	Q65110A9245	Golden DRAGON	Portfolio clearance	KW DMLS33.SG-Z6M7-ebvFfcbB46-8E8G-700-S	Q65112A3699	SYNIOS
LW W5SM-JYKY-LKML-1-350-R18-Z	Q65110A9245	Golden DRAGON	Portfolio clearance	LUW HWQP-5N8N-ebvF46fcbB46-8E8H-1A-S	Q65112A6099	OSLON



DISCONTINUED				NEW (REPLACEMENT)		
Device	Ordering Code	Brand	Reason for discontinuation	Device	Datasheet Ordering Code	Brand
LW W5SM-JYKY-LKOL-1-350-R18-Z	Q65110A9506	Golden DRAGON	Portfolio clearance	KW DMLS33.SG-Z6M7-ebvFfcbB46-8E8G-700-S	Q65112A3699	SYNIOS
LW W5SM-JYKY-LKOL-1-350-R18-Z	Q65110A9506	Golden DRAGON	Portfolio clearance	LUW HWQP-5N8N-ebvF46fcbB46-8E8H-1A-S	Q65112A6099	OSLON
LW W5SM-JYKY-MNK-0-350-R18-ZG-HE	Q65112A1696	Golden DRAGON	Portfolio clearance	KW DMLS33.SG-Z6M7-ebvFfcbB46-8E8G-700-S	Q65112A3699	SYNIOS
LW W5SM-JYKY-MNK-0-350-R18-ZG-HE	Q65112A1696	Golden DRAGON	Portfolio clearance	LUW HWQP-5N8N-ebvF46fcbB46-8E8H-1A-S	Q65112A6099	OSLON
LW W5SM-JYKY-NK-1-350-R18-Z-HE	Q65111A2630	Golden DRAGON	Portfolio clearance	KW DMLS33.SG-Z6M7-ebvFfcbB46-8E8G-700-S	Q65112A3699	SYNIOS
LW W5SM-JYKY-NK-1-350-R18-Z-HE	Q65111A2630	Golden DRAGON	Portfolio clearance	LUW HWQP-5N8N-ebvF46fcbB46-8E8H-1A-S	Q65112A6099	OSLON
LW W5SM-JYKY-NOK-1-350-R18-ZG-HE	Q65110A9186	Golden DRAGON	Portfolio clearance	KW DMLS33.SG-Z6M7-ebvFfcbB46-8E8G-700-S	Q65112A3699	SYNIOS
LW W5SM-JYKY-NOK-1-350-R18-ZG-HE	Q65110A9186	Golden DRAGON	Portfolio clearance	LUW HWQP-5N8N-ebvF46fcbB46-8E8H-1A-S	Q65112A6099	OSLON
LW W5SM-JYKY-PK-1-350-R18-Z-HE	Q65111A3562	Golden DRAGON	Portfolio clearance	KW DMLS33.SG-Z6M7-ebvFfcbB46-8E8G-700-S	Q65112A3699	SYNIOS
LW W5SM-JYKY-PK-1-350-R18-Z-HE	Q65111A3562	Golden DRAGON	Portfolio clearance	LUW HWQP-5N8N-ebvF46fcbB46-8E8H-1A-S	Q65112A6099	OSLON
LW W5SM-JZKY-4H6J-1-350-R18-ZG-HE	Q65110A8050	Golden DRAGON	Portfolio clearance	KW DMLS33.SG-Z6M7-ebvFfcbB46-8E8G-700-S	Q65112A3699	SYNIOS
LW W5SM-JZKY-4H6J-1-350-R18-ZG-HE	Q65110A8050	Golden DRAGON	Portfolio clearance	LUW HWQP-5N8N-ebvF46fcbB46-8E8H-1A-S	Q65112A6099	OSLON
LW W5SM-JZKY-5F6H-1-350-R18-ZG-HE	Q65110A8804	Golden DRAGON	Portfolio clearance	KW DMLS33.SG-Z6M7-ebvFfcbB46-8E8G-700-S	Q65112A3699	SYNIOS
LW W5SM-JZKY-5F6H-1-350-R18-ZG-HE	Q65110A8804	Golden DRAGON	Portfolio clearance	LUW HWQP-5N8N-ebvF46fcbB46-8E8H-1A-S	Q65112A6099	OSLON
LW W5SM-JZKY-5H6J-1-350-R18-ZG-HE	Q65110A8053	Golden DRAGON	Portfolio clearance	KW DMLS33.SG-Z6M7-ebvFfcbB46-8E8G-700-S	Q65112A3699	SYNIOS
LW W5SM-JZKY-5H6J-1-350-R18-ZG-HE	Q65110A8053	Golden DRAGON	Portfolio clearance	LUW HWQP-5N8N-ebvF46fcbB46-8E8H-1A-S	Q65112A6099	OSLON
LW W5SM-JZKY-NK-1-350-R18-Z-HE	Q65111A2081	Golden DRAGON	Portfolio clearance	KW DMLS33.SG-Z6M7-ebvFfcbB46-8E8G-700-S	Q65112A3699	SYNIOS
LW W5SM-JZKY-NK-1-350-R18-Z-HE	Q65111A2081	Golden DRAGON	Portfolio clearance	LUW HWQP-5N8N-ebvF46fcbB46-8E8H-1A-S	Q65112A6099	OSLON
LW W5SM-JZKY-NK-1-350-R18-Z-XX	Q65111A2329	Golden DRAGON	Portfolio clearance	KW DMLS33.SG-Z6M7-ebvFfcbB46-8E8G-700-S	Q65112A3699	SYNIOS
LW W5SM-JZKY-NK-1-350-R18-Z-XX	Q65111A2329	Golden DRAGON	Portfolio clearance	LUW HWQP-5N8N-ebvF46fcbB46-8E8H-1A-S	Q65112A6099	OSLON
LW W5SM-JZKY-NL-1-350-R18-ZG-XX	Q65110A9189	Golden DRAGON	Portfolio clearance	KW DMLS33.SG-Z6M7-ebvFfcbB46-8E8G-700-S	Q65112A3699	SYNIOS



DISCONTINUED				NEW (REPLACEMENT)		
Device	Ordering Code	Brand	Reason for discontinuation	Device	Datasheet Ordering Code	Brand
LW W5SM-JZKY-NL-1-350-R18-ZG-XX	Q65110A9189	Golden DRAGON	Portfolio clearance	LUW HWQP-5N8N-ebvF46fcbB46-8E8H-1A-S	Q65112A6099	OSLON
LW W5SM-JZKY-NOK-1-350-R18-ZG-HE	Q65110A9296	Golden DRAGON	Portfolio clearance	KW DMLS33.SG-Z6M7-ebvFfcbB46-8E8G-700-S	Q65112A3699	SYNIOS
LW W5SM-JZKY-NOK-1-350-R18-ZG-HE	Q65110A9296	Golden DRAGON	Portfolio clearance	LUW HWQP-5N8N-ebvF46fcbB46-8E8H-1A-S	Q65112A6099	OSLON
LW W5SM-JZKY-NPK-1-350-R18-ZG-HE	Q65110A9983	Golden DRAGON	Portfolio clearance	KW DMLS33.SG-Z6M7-ebvFfcbB46-8E8G-700-S	Q65112A3699	SYNIOS
LW W5SM-JZKY-NPK-1-350-R18-ZG-HE	Q65110A9983	Golden DRAGON	Portfolio clearance	LUW HWQP-5N8N-ebvF46fcbB46-8E8H-1A-S	Q65112A6099	OSLON
LW W5SM-JZKY-OL-1-350-R18-ZG-XX	Q65110A9190	Golden DRAGON	Portfolio clearance	KW DMLS33.SG-Z6M7-ebvFfcbB46-8E8G-700-S	Q65112A3699	SYNIOS
LW W5SM-JZKY-OL-1-350-R18-ZG-XX	Q65110A9190	Golden DRAGON	Portfolio clearance	LUW HWQP-5N8N-ebvF46fcbB46-8E8H-1A-S	Q65112A6099	OSLON
LW W5SM-KXKY-3D4E-1-350-R18-ZG-AL	Q65110A8759	Golden DRAGON	Portfolio clearance	KW DMLS33.SG-Z6M7-ebvFfcbB46-8E8G-700-S	Q65112A3699	SYNIOS
LW W5SM-KXKY-3D4E-1-350-R18-ZG-AL	Q65110A8759	Golden DRAGON	Portfolio clearance	LUW HWQP-5N8N-ebvF46fcbB46-8E8H-1A-S	Q65112A6099	OSLON
LW W5SM-KXKY-NL-1-350-R18-Z-XX	Q65111A2330	Golden DRAGON	Portfolio clearance	KW DMLS33.SG-Z6M7-ebvFfcbB46-8E8G-700-S	Q65112A3699	SYNIOS
LW W5SM-KXKY-NL-1-350-R18-Z-XX	Q65111A2330	Golden DRAGON	Portfolio clearance	LUW HWQP-5N8N-ebvF46fcbB46-8E8H-1A-S	Q65112A6099	OSLON
LW W5SM-KXKY-NOK-1-350-R18-Z-XX	Q65112A1891	Golden DRAGON	Portfolio clearance	KW DMLS33.SG-Z6M7-ebvFfcbB46-8E8G-700-S	Q65112A3699	SYNIOS
LW W5SM-KXKY-NOK-1-350-R18-Z-XX	Q65112A1891	Golden DRAGON	Portfolio clearance	LUW HWQP-5N8N-ebvF46fcbB46-8E8H-1A-S	Q65112A6099	OSLON
LW W5SM-KXKY-NOL-1-350-R18-Z-XX	Q65111A0455	Golden DRAGON	Portfolio clearance	KW DMLS33.SG-Z6M7-ebvFfcbB46-8E8G-700-S	Q65112A3699	SYNIOS
LW W5SM-KXKY-NOL-1-350-R18-Z-XX	Q65111A0455	Golden DRAGON	Portfolio clearance	LUW HWQP-5N8N-ebvF46fcbB46-8E8H-1A-S	Q65112A6099	OSLON
LW W5SM-KXKZ-3H8J-1-350-R18-ZG-HE	Q65110A8052	Golden DRAGON	Portfolio clearance	KW DMLS33.SG-Z6M7-ebvFfcbB46-8E8G-700-S	Q65112A3699	SYNIOS
LW W5SM-KXKZ-3H8J-1-350-R18-ZG-HE	Q65110A8052	Golden DRAGON	Portfolio clearance	LUW HWQP-5N8N-ebvF46fcbB46-8E8H-1A-S	Q65112A6099	OSLON
LW W5SM-KXKZ-JKQL-1-350-R18-Z	Q65111A6627	Golden DRAGON	Portfolio clearance	KW DMLS33.SG-Z6M7-ebvFfcbB46-8E8G-700-S	Q65112A3699	SYNIOS
LW W5SM-KXKZ-JKQL-1-350-R18-Z	Q65111A6627	Golden DRAGON	Portfolio clearance	LUW HWQP-5N8N-ebvF46fcbB46-8E8H-1A-S	Q65112A6099	OSLON
LW W5SM-KXKZ-LL-1-350-R18-Z-AL	Q65111A2993	Golden DRAGON	Portfolio clearance	KW DMLS33.SG-Z6M7-ebvFfcbB46-8E8G-700-S	Q65112A3699	SYNIOS
LW W5SM-KXKZ-LL-1-350-R18-Z-AL	Q65111A2993	Golden DRAGON	Portfolio clearance	LUW HWQP-5N8N-ebvF46fcbB46-8E8H-1A-S	Q65112A6099	OSLON

DISCONTINUED				NEW (REPLACEMENT)		
Device	Ordering Code	Brand	Reason for discontinuation	Device	Datasheet Ordering Code	Brand
LW W5SM-KXKZ-LNK-1-350-R18-Z-AL	Q65111A3805	Golden DRAGON	Portfolio clearance	KW DMLS33.SG-Z6M7-ebvFfcbB46-8E8G-700-S	Q65112A3699	SYNIOS
LW W5SM-KXKZ-LNK-1-350-R18-Z-AL	Q65111A3805	Golden DRAGON	Portfolio clearance	LUW HWQP-5N8N-ebvF46fcbB46-8E8H-1A-S	Q65112A6099	OSLON
LW W5SM-KXKZ-MK-1-350-R18-Z-XX	Q65111A1032	Golden DRAGON	Portfolio clearance	KW DMLS33.SG-Z6M7-ebvFfcbB46-8E8G-700-S	Q65112A3699	SYNIOS
LW W5SM-KXKZ-MK-1-350-R18-Z-XX	Q65111A1032	Golden DRAGON	Portfolio clearance	LUW HWQP-5N8N-ebvF46fcbB46-8E8H-1A-S	Q65112A6099	OSLON
LW W5SM-KXKZ-MKOL-1-350-R18-Z	Q65111A9193	Golden DRAGON	Portfolio clearance	KW DMLS33.SG-Z6M7-ebvFfcbB46-8E8G-700-S	Q65112A3699	SYNIOS
LW W5SM-KXKZ-MKOL-1-350-R18-Z	Q65111A9193	Golden DRAGON	Portfolio clearance	LUW HWQP-5N8N-ebvF46fcbB46-8E8H-1A-S	Q65112A6099	OSLON
LW W5SM-KXKZ-MNK-1-350-R18-Z	Q65111A0668	Golden DRAGON	Portfolio clearance	KW DMLS33.SG-Z6M7-ebvFfcbB46-8E8G-700-S	Q65112A3699	SYNIOS
LW W5SM-KXKZ-MNK-1-350-R18-Z	Q65111A0668	Golden DRAGON	Portfolio clearance	LUW HWQP-5N8N-ebvF46fcbB46-8E8H-1A-S	Q65112A6099	OSLON
LW W5SM-KXKZ-MNL-1-350-R18-Z	Q65111A0383	Golden DRAGON	Portfolio clearance	KW DMLS33.SG-Z6M7-ebvFfcbB46-8E8G-700-S	Q65112A3699	SYNIOS
LW W5SM-KXKZ-MNL-1-350-R18-Z	Q65111A0383	Golden DRAGON	Portfolio clearance	LUW HWQP-5N8N-ebvF46fcbB46-8E8H-1A-S	Q65112A6099	OSLON
LW W5SM-KXKZ-NK-1-350-R18-Z-XX	Q65111A1058	Golden DRAGON	Portfolio clearance	KW DMLS33.SG-Z6M7-ebvFfcbB46-8E8G-700-S	Q65112A3699	SYNIOS
LW W5SM-KXKZ-NK-1-350-R18-Z-XX	Q65111A1058	Golden DRAGON	Portfolio clearance	LUW HWQP-5N8N-ebvF46fcbB46-8E8H-1A-S	Q65112A6099	OSLON
LW W5SM-KXKZ-NKOL-1-350-R18-ZG-AL	Q65110A9879	Golden DRAGON	Portfolio clearance	KW DMLS33.SG-Z6M7-ebvFfcbB46-8E8G-700-S	Q65112A3699	SYNIOS
LW W5SM-KXKZ-NKOL-1-350-R18-ZG-AL	Q65110A9879	Golden DRAGON	Portfolio clearance	LUW HWQP-5N8N-ebvF46fcbB46-8E8H-1A-S	Q65112A6099	OSLON
LW W5SM-KXKZ-NOK-1-350-R18-Z	Q65111A0132	Golden DRAGON	Portfolio clearance	KW DMLS33.SG-Z6M7-ebvFfcbB46-8E8G-700-S	Q65112A3699	SYNIOS
LW W5SM-KXKZ-NOK-1-350-R18-Z	Q65111A0132	Golden DRAGON	Portfolio clearance	LUW HWQP-5N8N-ebvF46fcbB46-8E8H-1A-S	Q65112A6099	OSLON
LW W5SM-KXKZ-NOK-1-350-R18-Z-AL	Q65112A2451	Golden DRAGON	Portfolio clearance	KW DMLS33.SG-Z6M7-ebvFfcbB46-8E8G-700-S	Q65112A3699	SYNIOS
LW W5SM-KXKZ-NOK-1-350-R18-Z-AL	Q65112A2451	Golden DRAGON	Portfolio clearance	LUW HWQP-5N8N-ebvF46fcbB46-8E8H-1A-S	Q65112A6099	OSLON
LW W5SM-KXKZ-NOK-1-350-R18-Z-HE	Q65112A0714	Golden DRAGON	Portfolio clearance	KW DMLS33.SG-Z6M7-ebvFfcbB46-8E8G-700-S	Q65112A3699	SYNIOS
LW W5SM-KXKZ-NOK-1-350-R18-Z-HE	Q65112A0714	Golden DRAGON	Portfolio clearance	LUW HWQP-5N8N-ebvF46fcbB46-8E8H-1A-S	Q65112A6099	OSLON
LW W5SM-KXKZ-NOK-1-350-R33-Z-AL	Q65111A7297	Golden DRAGON	Portfolio clearance	KW DMLS33.SG-Z6M7-ebvFfcbB46-8E8G-700-S	Q65112A3699	SYNIOS

DISCONTINUED				NEW (REPLACEMENT)		
Device	Ordering Code	Brand	Reason for discontinuation	Device	Datasheet Ordering Code	Brand
LW W5SM-KXKZ-NOK-1-350-R33-Z-AL	Q65111A7297	Golden DRAGON	Portfolio clearance	LUW HWQP-5N8N-ebvF46fcbB46-8E8H-1A-S	Q65112A6099	OSLON
LW W5SM-KXKZ-NPK-1-350-R18-ZG-HE	Q65111A0065	Golden DRAGON	Portfolio clearance	KW DMLS33.SG-Z6M7-ebvFfcbB46-8E8G-700-S	Q65112A3699	SYNIOS
LW W5SM-KXKZ-NPK-1-350-R18-ZG-HE	Q65111A0065	Golden DRAGON	Portfolio clearance	LUW HWQP-5N8N-ebvF46fcbB46-8E8H-1A-S	Q65112A6099	OSLON
LW W5SM-KXKZ-NPK-1-350-R33-ZG-HE	Q65111A1050	Golden DRAGON	Portfolio clearance	KW DMLS33.SG-Z6M7-ebvFfcbB46-8E8G-700-S	Q65112A3699	SYNIOS
LW W5SM-KXKZ-NPK-1-350-R33-ZG-HE	Q65111A1050	Golden DRAGON	Portfolio clearance	LUW HWQP-5N8N-ebvF46fcbB46-8E8H-1A-S	Q65112A6099	OSLON
LW W5SM-KXKZ-OPK-1-350-R18-Z-HE	Q65111A0529	Golden DRAGON	Portfolio clearance	KW DMLS33.SG-Z6M7-ebvFfcbB46-8E8G-700-S	Q65112A3699	SYNIOS
LW W5SM-KXKZ-OPK-1-350-R18-Z-HE	Q65111A0529	Golden DRAGON	Portfolio clearance	LUW HWQP-5N8N-ebvF46fcbB46-8E8H-1A-S	Q65112A6099	OSLON
LW W5SM-KXLX-JKQL-24E4-350-R18-Z	Q65111A8469	Golden DRAGON	Portfolio clearance	KW DMLS33.SG-Z6M7-ebvFfcbB46-8E8G-700-S	Q65112A3699	SYNIOS
LW W5SM-KXLX-JKQL-24E4-350-R18-Z	Q65111A8469	Golden DRAGON	Portfolio clearance	LUW HWQP-5N8N-ebvF46fcbB46-8E8H-1A-S	Q65112A6099	OSLON
LW W5SM-KXLX-KLK-1-350-R18-Z	Q65111A0294	Golden DRAGON	Portfolio clearance	KW DMLS33.SG-Z6M7-ebvFfcbB46-8E8G-700-S	Q65112A3699	SYNIOS
LW W5SM-KXLX-KLK-1-350-R18-Z	Q65111A0294	Golden DRAGON	Portfolio clearance	LUW HWQP-5N8N-ebvF46fcbB46-8E8H-1A-S	Q65112A6099	OSLON
LW W5SM-KXLX-NOK-1-350-R18-Z-AL	Q65111A0221	Golden DRAGON	Portfolio clearance	KW DMLS33.SG-Z6M7-ebvFfcbB46-8E8G-700-S	Q65112A3699	SYNIOS
LW W5SM-KXLX-NOK-1-350-R18-Z-AL	Q65111A0221	Golden DRAGON	Portfolio clearance	LUW HWQP-5N8N-ebvF46fcbB46-8E8H-1A-S	Q65112A6099	OSLON
LW W5SM-KYKZ-MOL-1-350-R18-Z-AL	Q65111A2174	Golden DRAGON	Portfolio clearance	KW DMLS33.SG-Z6M7-ebvFfcbB46-8E8G-700-S	Q65112A3699	SYNIOS
LW W5SM-KYKZ-MOL-1-350-R18-Z-AL	Q65111A2174	Golden DRAGON	Portfolio clearance	LUW HWQP-5N8N-ebvF46fcbB46-8E8H-1A-S	Q65112A6099	OSLON
LW W5SM-KYKZ-NL-1-350-R18-Z-XX	Q65111A2331	Golden DRAGON	Portfolio clearance	KW DMLS33.SG-Z6M7-ebvFfcbB46-8E8G-700-S	Q65112A3699	SYNIOS
LW W5SM-KYKZ-NL-1-350-R18-Z-XX	Q65111A2331	Golden DRAGON	Portfolio clearance	LUW HWQP-5N8N-ebvF46fcbB46-8E8H-1A-S	Q65112A6099	OSLON
LW W5SM-KYLX-MKNL-1-350-R18-Z-VL	Q65111A7397	Golden DRAGON	Portfolio clearance	KW DMLS33.SG-Z6M7-ebvFfcbB46-8E8G-700-S	Q65112A3699	SYNIOS
LW W5SM-KYLX-MKNL-1-350-R18-Z-VL	Q65111A7397	Golden DRAGON	Portfolio clearance	LUW HWQP-5N8N-ebvF46fcbB46-8E8H-1A-S	Q65112A6099	OSLON
LW W5SM-KYLX-MNK-1-350-R18-Z-VL	Q65111A4055	Golden DRAGON	Portfolio clearance	KW DMLS33.SG-Z6M7-ebvFfcbB46-8E8G-700-S	Q65112A3699	SYNIOS
LW W5SM-KYLX-MNK-1-350-R18-Z-VL	Q65111A4055	Golden DRAGON	Portfolio clearance	LUW HWQP-5N8N-ebvF46fcbB46-8E8H-1A-S	Q65112A6099	OSLON



DISCONTINUED				NEW (REPLACEMENT)		
Device	Ordering Code	Brand	Reason for discontinuation	Device	Datasheet Ordering Code	Brand
LW W5SM-KYLX-MNK-1-350-R18-Z-XX	Q65111A1443	Golden DRAGON	Portfolio clearance	KW DMLS33.SG-Z6M7-ebvFfcbB46-8E8G-700-S	Q65112A3699	SYNIOS
LW W5SM-KYLX-MNK-1-350-R18-Z-XX	Q65111A1443	Golden DRAGON	Portfolio clearance	LUW HWQP-5N8N-ebvF46fcbB46-8E8H-1A-S	Q65112A6099	OSLON
LW W5SM-KYLX-NKOK-1-350-R18-Z-AL	Q65111A4193	Golden DRAGON	Portfolio clearance	KW DMLS33.SG-Z6M7-ebvFfcbB46-8E8G-700-S	Q65112A3699	SYNIOS
LW W5SM-KYLX-NKOK-1-350-R18-Z-AL	Q65111A4193	Golden DRAGON	Portfolio clearance	LUW HWQP-5N8N-ebvF46fcbB46-8E8H-1A-S	Q65112A6099	OSLON
LW W5SM-KYLX-NOK-1-350-R18-Z-AL	Q65111A0457	Golden DRAGON	Portfolio clearance	KW DMLS33.SG-Z6M7-ebvFfcbB46-8E8G-700-S	Q65112A3699	SYNIOS
LW W5SM-KYLX-NOK-1-350-R18-Z-AL	Q65111A0457	Golden DRAGON	Portfolio clearance	LUW HWQP-5N8N-ebvF46fcbB46-8E8H-1A-S	Q65112A6099	OSLON
LW W5SM-KYLX-NOK-1-350-R18-Z-XX	Q65111A0042	Golden DRAGON	Portfolio clearance	KW DMLS33.SG-Z6M7-ebvFfcbB46-8E8G-700-S	Q65112A3699	SYNIOS
LW W5SM-KYLX-NOK-1-350-R18-Z-XX	Q65111A0042	Golden DRAGON	Portfolio clearance	LUW HWQP-5N8N-ebvF46fcbB46-8E8H-1A-S	Q65112A6099	OSLON
LW W5SM-KYLX-NOL-1-350-R18-Z-XX	Q65111A0934	Golden DRAGON	Portfolio clearance	KW DMLS33.SG-Z6M7-ebvFfcbB46-8E8G-700-S	Q65112A3699	SYNIOS
LW W5SM-KYLX-NOL-1-350-R18-Z-XX	Q65111A0934	Golden DRAGON	Portfolio clearance	LUW HWQP-5N8N-ebvF46fcbB46-8E8H-1A-S	Q65112A6099	OSLON
<b>LY G5AP</b>						
LY G5AP-CXDX-36-1-100-R18-Z	Q65111A1320	Advanced Power TOPLED	Portfolio clearance	LY G6SP-CBEB-36-3B5A-140-R18-Z	Q65111A8100	Advanced Power TOPLED
LY G5AP-CYDX-35-1-100-R18-Z	Q65111A1878	Advanced Power TOPLED	Portfolio clearance	LY G6SP-CBEB-36-3B5A-140-R18-Z	Q65111A8100	Advanced Power TOPLED
LY G5AP-CZDX-46-1-100-R18-Z-CK	Q65111A1562	Advanced Power TOPLED	Portfolio clearance	LY G6SP-CBEB-36-3B5A-140-R18-Z	Q65111A8100	Advanced Power TOPLED
LY G5AP-CZDY-56-1-100-R18-Z-XX	Q65111A3745	Advanced Power TOPLED	Portfolio clearance	LY G6SP-CBEB-36-3B5A-140-R18-Z	Q65111A8100	Advanced Power TOPLED
LY G5AP-CZDZ-36-1-100-R18-Z	Q65111A1319	Advanced Power TOPLED	Portfolio clearance	LY G6SP-CBEB-36-3B5A-140-R18-Z	Q65111A8100	Advanced Power TOPLED
<b>LY W5SM</b>						
LY W5SM-HYJY-45-1-400-R18-Z	Q65110A7198	Golden DRAGON	Portfolio clearance	LY H9PP-HZKX-46-1-350-R18-Z	Q65111A7406	OSLON
LY W5SM-HYJY-45-1-400-R18-Z	Q65110A7198	Golden DRAGON	Portfolio clearance	KY DMLS31.23-8J7L-46-M3W3-700-R18-Z	Q65112A0161	SYNIOS
LY W5SM-HYJY-45-1-400-R33-Z	Q65110A9073	Golden DRAGON	Portfolio clearance	LY H9PP-HZKX-46-1-350-R18-Z	Q65111A7406	OSLON
LY W5SM-HYJY-45-1-400-R33-Z	Q65110A9073	Golden DRAGON	Portfolio clearance	KY DMLS31.23-8J7L-46-M3W3-700-R18-Z	Q65112A0161	SYNIOS



DISCONTINUED				NEW (REPLACEMENT)		
Device	Ordering Code	Brand	Reason for discontinuation	Device	Datasheet Ordering Code	Brand
LY W5SM-HYJY-46-1-400-R18-Z	Q65110A9227	Golden DRAGON	Portfolio clearance	LY H9PP-HZKX-46-1-350-R18-Z	Q65111A7406	OSLON
LY W5SM-HYJY-46-1-400-R18-Z	Q65110A9227	Golden DRAGON	Portfolio clearance	KY DMLS31.23-8J7L-46-M3W3-700-R18-Z	Q65112A0161	SYNIOS
LY W5SM-HZJY-45-1-400-R18-ZG-AL	Q65111A0091	Golden DRAGON	Portfolio clearance	LY H9PP-HZKX-46-1-350-R18-Z	Q65111A7406	OSLON
LY W5SM-HZJY-45-1-400-R18-ZG-AL	Q65111A0091	Golden DRAGON	Portfolio clearance	KY DMLS31.23-8J7L-46-M3W3-700-R18-Z	Q65112A0161	SYNIOS
LY W5SM-HZJY-45-1-400-R18-Z-XX	Q65110A6403	Golden DRAGON	Portfolio clearance	LY H9PP-HZKX-46-1-350-R18-Z	Q65111A7406	OSLON
LY W5SM-HZJY-45-1-400-R18-Z-XX	Q65110A6403	Golden DRAGON	Portfolio clearance	KY DMLS31.23-8J7L-46-M3W3-700-R18-Z	Q65112A0161	SYNIOS
LY W5SM-HZJY-45-1-400-R33-ZG-HE	Q65110A8016	Golden DRAGON	Portfolio clearance	LY H9PP-HZKX-46-1-350-R18-Z	Q65111A7406	OSLON
LY W5SM-HZJY-45-1-400-R33-ZG-HE	Q65110A8016	Golden DRAGON	Portfolio clearance	KY DMLS31.23-8J7L-46-M3W3-700-R18-Z	Q65112A0161	SYNIOS
LY W5SM-HZJY-45-1-400-R33-Z-XX	Q65110A8070	Golden DRAGON	Portfolio clearance	LY H9PP-HZKX-46-1-350-R18-Z	Q65111A7406	OSLON
LY W5SM-HZJY-45-1-400-R33-Z-XX	Q65110A8070	Golden DRAGON	Portfolio clearance	KY DMLS31.23-8J7L-46-M3W3-700-R18-Z	Q65112A0161	SYNIOS
LY W5SM-HZJZ-35-1-400-R18-Z	Q65111A2600	Golden DRAGON	Portfolio clearance	LY H9PP-HZKX-46-1-350-R18-Z	Q65111A7406	OSLON
LY W5SM-HZJZ-35-1-400-R18-Z	Q65111A2600	Golden DRAGON	Portfolio clearance	KY DMLS31.23-8J7L-46-M3W3-700-R18-Z	Q65112A0161	SYNIOS
LY W5SM-HZJZ-45-1-400-R18-Z	Q65110A9355	Golden DRAGON	Portfolio clearance	LY H9PP-HZKX-46-1-350-R18-Z	Q65111A7406	OSLON
LY W5SM-HZJZ-45-1-400-R18-Z	Q65110A9355	Golden DRAGON	Portfolio clearance	KY DMLS31.23-8J7L-46-M3W3-700-R18-Z	Q65112A0161	SYNIOS
LY W5SM-HZJZ-46-1-400-R18-Z	Q65111A2817	Golden DRAGON	Portfolio clearance	LY H9PP-HZKX-46-1-350-R18-Z	Q65111A7406	OSLON
LY W5SM-HZJZ-46-1-400-R18-Z	Q65111A2817	Golden DRAGON	Portfolio clearance	KY DMLS31.23-8J7L-46-M3W3-700-R18-Z	Q65112A0161	SYNIOS
LY W5SM-HZJZ-5-1-400-R18-Z	Q65111A1057	Golden DRAGON	Portfolio clearance	LY H9PP-HZKX-46-1-350-R18-Z	Q65111A7406	OSLON
LY W5SM-HZJZ-5-1-400-R18-Z	Q65111A1057	Golden DRAGON	Portfolio clearance	KY DMLS31.23-8J7L-46-M3W3-700-R18-Z	Q65112A0161	SYNIOS
LY W5SM-HZKX-34-1-400-R18-Z-VL	Q65111A2810	Golden DRAGON	Portfolio clearance	LY H9PP-HZKX-46-1-350-R18-Z	Q65111A7406	OSLON
LY W5SM-HZKX-34-1-400-R18-Z-VL	Q65111A2810	Golden DRAGON	Portfolio clearance	KY DMLS31.23-8J7L-46-M3W3-700-R18-Z	Q65112A0161	SYNIOS
LY W5SM-HZKX-35-J3T3-400-R18-Z	Q65112A3894	Golden DRAGON	Portfolio clearance	LY H9PP-HZKX-46-1-350-R18-Z	Q65111A7406	OSLON

DISCONTINUED				NEW (REPLACEMENT)		
Device	Ordering Code	Brand	Reason for discontinuation	Device	Datasheet Ordering Code	Brand
LY W5SM-HZKX-35-J3T3-400-R18-Z	Q65112A3894	Golden DRAGON	Portfolio clearance	KY DMLS31.23-8J7L-46-M3W3-700-R18-Z	Q65112A0161	SYNIOS
LY W5SM-JXJY-36-1-400-R18-Z	Q65110A9458	Golden DRAGON	Portfolio clearance	LY H9PP-HZKX-46-1-350-R18-Z	Q65111A7406	OSLON
LY W5SM-JXJY-36-1-400-R18-Z	Q65110A9458	Golden DRAGON	Portfolio clearance	KY DMLS31.23-8J7L-46-M3W3-700-R18-Z	Q65112A0161	SYNIOS
LY W5SM-JXJY-45-1-400-R18-Z-XX	Q65111A0972	Golden DRAGON	Portfolio clearance	LY H9PP-HZKX-46-1-350-R18-Z	Q65111A7406	OSLON
LY W5SM-JXJY-45-1-400-R18-Z-XX	Q65111A0972	Golden DRAGON	Portfolio clearance	KY DMLS31.23-8J7L-46-M3W3-700-R18-Z	Q65112A0161	SYNIOS
LY W5SM-JXJY-46-1-400-R18-Z-XX	Q65110A7255	Golden DRAGON	Portfolio clearance	LY H9PP-HZKX-46-1-350-R18-Z	Q65111A7406	OSLON
LY W5SM-JXJY-46-1-400-R18-Z-XX	Q65110A7255	Golden DRAGON	Portfolio clearance	KY DMLS31.23-8J7L-46-M3W3-700-R18-Z	Q65112A0161	SYNIOS
LY W5SM-JXJZ-45-1-400-R18-Z	Q65110A6567	Golden DRAGON	Portfolio clearance	LY H9PP-HZKX-46-1-350-R18-Z	Q65111A7406	OSLON
LY W5SM-JXJZ-45-1-400-R18-Z	Q65110A6567	Golden DRAGON	Portfolio clearance	KY DMLS31.23-8J7L-46-M3W3-700-R18-Z	Q65112A0161	SYNIOS
LY W5SM-JXJZ-45-1-400-R18-ZG-AL	Q65111A0092	Golden DRAGON	Portfolio clearance	LY H9PP-HZKX-46-1-350-R18-Z	Q65111A7406	OSLON
LY W5SM-JXJZ-45-1-400-R18-ZG-AL	Q65111A0092	Golden DRAGON	Portfolio clearance	KY DMLS31.23-8J7L-46-M3W3-700-R18-Z	Q65112A0161	SYNIOS
LY W5SM-JXJZ-45-1-400-R18-Z-VL	Q65110A8809	Golden DRAGON	Portfolio clearance	LY H9PP-HZKX-46-1-350-R18-Z	Q65111A7406	OSLON
LY W5SM-JXJZ-45-1-400-R18-Z-VL	Q65110A8809	Golden DRAGON	Portfolio clearance	KY DMLS31.23-8J7L-46-M3W3-700-R18-Z	Q65112A0161	SYNIOS
LY W5SM-JXJZ-45-1-400-R33-Z-XX	Q65110A8071	Golden DRAGON	Portfolio clearance	LY H9PP-HZKX-46-1-350-R18-Z	Q65111A7406	OSLON
LY W5SM-JXJZ-45-1-400-R33-Z-XX	Q65110A8071	Golden DRAGON	Portfolio clearance	KY DMLS31.23-8J7L-46-M3W3-700-R18-Z	Q65112A0161	SYNIOS
LY W5SM-JXJZ-5-1-400-R18-Z-VL	Q65110A9965	Golden DRAGON	Portfolio clearance	LY H9PP-HZKX-46-1-350-R18-Z	Q65111A7406	OSLON
LY W5SM-JXJZ-5-1-400-R18-Z-VL	Q65110A9965	Golden DRAGON	Portfolio clearance	KY DMLS31.23-8J7L-46-M3W3-700-R18-Z	Q65112A0161	SYNIOS
LY W5SM-JXKY-35-1-400-R18-HAN	Q65112A6124	Golden DRAGON	Portfolio clearance	LY H9PP-HZKX-46-1-350-R18-Z	Q65111A7406	OSLON
LY W5SM-JXKY-35-1-400-R18-HAN	Q65112A6124	Golden DRAGON	Portfolio clearance	KY DMLS31.23-8J7L-46-M3W3-700-R18-Z	Q65112A0161	SYNIOS
LY W5SM-JXKY-46-J3T3-400-R18-Z	Q65112A3895	Golden DRAGON	Portfolio clearance	LY H9PP-HZKX-46-1-350-R18-Z	Q65111A7406	OSLON
LY W5SM-JXKY-46-J3T3-400-R18-Z	Q65112A3895	Golden DRAGON	Portfolio clearance	KY DMLS31.23-8J7L-46-M3W3-700-R18-Z	Q65112A0161	SYNIOS

DISCONTINUED				NEW (REPLACEMENT)		
Device	Ordering Code	Brand	Reason for discontinuation	Device	Datasheet Ordering Code	Brand
LY W5SM-JYKX-45-1-400-R18-Z-AL	Q65111A3755	Golden DRAGON	Portfolio clearance	LY H9PP-HZKX-46-1-350-R18-Z	Q65111A7406	OSLON
LY W5SM-JYKX-45-1-400-R18-Z-AL	Q65111A3755	Golden DRAGON	Portfolio clearance	KY DMLS31.23-8J7L-46-M3W3-700-R18-Z	Q65112A0161	SYNIOS
LY W5SM-JYKX-45-1-400-R18-Z-XX	Q65111A7540	Golden DRAGON	Portfolio clearance	LY H9PP-HZKX-46-1-350-R18-Z	Q65111A7406	OSLON
LY W5SM-JYKX-45-1-400-R18-Z-XX	Q65111A7540	Golden DRAGON	Portfolio clearance	KY DMLS31.23-8J7L-46-M3W3-700-R18-Z	Q65112A0161	SYNIOS
LY W5SM-JYKX-45-1-400-R18-Z-ZKW	Q65111A4495	Golden DRAGON	Portfolio clearance	LY H9PP-HZKX-46-1-350-R18-Z	Q65111A7406	OSLON
LY W5SM-JYKX-45-1-400-R18-Z-ZKW	Q65111A4495	Golden DRAGON	Portfolio clearance	KY DMLS31.23-8J7L-46-M3W3-700-R18-Z	Q65112A0161	SYNIOS
<b>SFH 4232</b>						
SFH 4232 E9563-Z	Q65111A0312	Platinum DRAGON	Portfolio clearance	SFH 4770S	Q65111A9246	SYNIOS
SFH 4232-DA C1015	Q65112A4971	Platinum DRAGON	Portfolio clearance	SFH 4770S	Q65111A9246	SYNIOS
SFH 4232-DADB-Z	Q65110A9707	Platinum DRAGON	Portfolio clearance	SFH 4770S	Q65111A9246	SYNIOS
SFH 4232-DA-XX	Q65111A4380	Platinum DRAGON	Portfolio clearance	SFH 4770S	Q65111A9246	SYNIOS
SFH 4232-Z	Q65110A8754	Platinum DRAGON	Portfolio clearance	SFH 4770S	Q65111A9246	SYNIOS
<b>SFH 4232A</b>						
SFH 4232A	Q65111A3235	Golden DRAGON	Portfolio clearance	SFH 4770S	Q65111A9246	SYNIOS
SFH 4232A-DB	Q65111A5199	Golden DRAGON	Portfolio clearance	SFH 4770S	Q65111A9246	SYNIOS
<b>SFH 4235</b>						
SFH 4235 E9580	Q65111A1659	Platinum DRAGON	Portfolio clearance	SFH 4770S	Q65111A9246	SYNIOS
SFH 4235-EB-XX	Q65111A9751	Platinum DRAGON	Portfolio clearance	SFH 4770S	Q65111A9246	SYNIOS
SFH 4235-Z	Q65110A8900	Platinum DRAGON	Portfolio clearance	SFH 4770S	Q65111A9246	SYNIOS

# Products Affected by Product Discontinuation Notification

**Number:** OS-PDN-2019-043

**Name:** Product Discontinuation Due to Portfolio Clearance

**Release Date:** 7/15/2019

**Last Order:** 1/15/2020

**Last Delivery:** 7/15/2020

## DISCONTINUED

## NEW (REPLACEMENT)

Product	QNumber	QNumber Description	Part Number	Product	QNumber	QNumber Description	Part Number
LA G5AP	Q65111A1020	LA G5AP-CXDX-24-1-100-R18-Z	LA G5AP-CXDX-24-1--Z	LA G6SP.01	Q65112A5628	LA G6SP.01-8D6F-24-G3R3-140-R18-Z	
LA G5AP	Q65111A1021	LA G5AP-CZDZ-24-1-100-R18-Z	LA G5AP-CZDZ-24-1-Z	LA G6SP.01	Q65112A5628	LA G6SP.01-8D6F-24-G3R3-140-R18-Z	
LA G5AP	Q65111A3744	LA G5AP-DXDY-23-1-100-R18-Z-XX	LA G5AP-DXDY-23-1-XX	LA G6SP.01	Q65112A5628	LA G6SP.01-8D6F-24-G3R3-140-R18-Z	
LA W5SM	Q65110A7521	LA W5SM-JYKX-24-1-400-R18-Z	LA W5SM-JYKX-24-Z	LA H9PP	Q65111A4306	LA H9PP-JXKX-24-1-350-R18-Z	LA H9PP-JXKX-24-1
LA W5SM	Q65110A7521	LA W5SM-JYKY-24-1-400-R18-Z	LA W5SM-JYKY-24-Z	KR DMLS31.	Q65112A0163	KR DMLS31.23-5K8L-26-M3W3-700-R18-Z	KR DMLS31.23-5K8L-26-M3W3
LA W5SM	Q65110A9924	LA W5SM-JXKX-24-1-400-R18-ZG-LM	LA W5SM-JXKX-24-ZG-LM	LA H9PP	Q65111A4306	LA H9PP-JXKX-24-1-350-R18-Z	LA H9PP-JXKX-24-1
LA W5SM	Q65110A9924	LA W5SM-JXKY-24-1-400-R18-ZG-LM	LA W5SM-JXKY-24-ZG-LM	KR DMLS31.	Q65112A0163	KR DMLS31.23-5K8L-26-M3W3-700-R18-Z	KR DMLS31.23-5K8L-26-M3W3
LA W5SM	Q65111A0697	LA W5SM-JZKY-24-1-400-R18-Z-HE	LA W5SM-JZKY-24-Z-HE	LA H9PP	Q65111A4306	LA H9PP-JXKX-24-1-350-R18-Z	LA H9PP-JXKX-24-1
LA W5SM	Q65111A0697	LA W5SM-JZKY-24-1-400-R18-Z-HE	LA W5SM-JZKY-24-Z-HE	KR DMLS31.	Q65112A0163	KR DMLS31.23-5K8L-26-M3W3-700-R18-Z	KR DMLS31.23-5K8L-26-M3W3
LA W5SM	Q65111A0809	LA W5SM-JZKY-24-1-400-R18-Z-VL	LA W5SM-JZKY-24-Z-VL	KR DMLS31.	Q65112A0163	KR DMLS31.23-5K8L-26-M3W3-700-R18-Z	KR DMLS31.23-5K8L-26-M3W3
LA W5SM	Q65111A0809	LA W5SM-JZKY-24-1-400-R18-Z-VL	LA W5SM-JZKY-24-Z-VL	LA H9PP	Q65111A4306	LA H9PP-JXKX-24-1-350-R18-Z	LA H9PP-JXKX-24-1
LA W5SM	Q65111A2117	LA W5SM-JZKY-24-1-400-R18-Z-VAR	LA W5SM-JZKY-24-Z-VAR	LA H9PP	Q65111A4306	LA H9PP-JXKX-24-1-350-R18-Z	LA H9PP-JXKX-24-1
LA W5SM	Q65111A2117	LA W5SM-JZKY-24-1-400-R18-Z-VAR	LA W5SM-JZKY-24-Z-VAR	KR DMLS31.	Q65112A0163	KR DMLS31.23-5K8L-26-M3W3-700-R18-Z	KR DMLS31.23-5K8L-26-M3W3
LA W5SM	Q65111A2151	LA W5SM-JZKX-24-1-400-R18-Z-HE	LA W5SM-JZKX-24-Z-HE	LA H9PP	Q65111A4306	LA H9PP-JXKX-24-1-350-R18-Z	LA H9PP-JXKX-24-1
LA W5SM	Q65111A2151	LA W5SM-JZKY-24-1-400-R18-Z-HE	LA W5SM-JZKY-24-Z-HE	KR DMLS31.	Q65112A0163	KR DMLS31.23-5K8L-26-M3W3-700-R18-Z	KR DMLS31.23-5K8L-26-M3W3
LA W5SM	Q65111A2214	LA W5SM-JZKY-24-1-400-R18-Z-AL	LA W5SM-JZKY-24-1-Z-AL	KR DMLS31.	Q65112A0163	KR DMLS31.23-5K8L-26-M3W3-700-R18-Z	KR DMLS31.23-5K8L-26-M3W3
LA W5SM	Q65111A2214	LA W5SM-JZKY-24-1-400-R18-Z-AL	LA W5SM-JZKY-24-1-Z-AL	LA H9PP	Q65111A4306	LA H9PP-JXKX-24-1-350-R18-Z	LA H9PP-JXKX-24-1
LA W5SM	Q65111A2606	LA W5SM-JYKY-24-1-400-R18-Z	LA W5SM-JYKY-24-1	LA H9PP	Q65111A4306	LA H9PP-JXKX-24-1-350-R18-Z	LA H9PP-JXKX-24-1
LA W5SM	Q65111A2606	LA W5SM-JYKY-24-1-400-R18-Z	LA W5SM-JYKY-24-1	KR DMLS31.	Q65112A0163	KR DMLS31.23-5K8L-26-M3W3-700-R18-Z	KR DMLS31.23-5K8L-26-M3W3
LA W5SM	Q65111A2848	LA W5SM-JZKY-24-1-400-R18-Z-XX	LA W5SM-JZKY-24-1-Z-XX	KR DMLS31.	Q65112A0163	KR DMLS31.23-5K8L-26-M3W3-700-R18-Z	KR DMLS31.23-5K8L-26-M3W3
LA W5SM	Q65111A2848	LA W5SM-JZKY-24-1-400-R18-Z-XX	LA W5SM-JZKY-24-1-Z-XX	LA H9PP	Q65111A4306	LA H9PP-JXKX-24-1-350-R18-Z	LA H9PP-JXKX-24-1
LA W5SM	Q65111A3164	LA W5SM-JYKX-24-1-400-R18-Z-AL	LA W5SM-JYKX-24-1-Z-AL	KR DMLS31.	Q65112A0163	KR DMLS31.23-5K8L-26-M3W3-700-R18-Z	KR DMLS31.23-5K8L-26-M3W3
LA W5SM	Q65111A3164	LA W5SM-JYKY-24-1-400-R18-Z-AL	LA W5SM-JYKY-24-1-Z-AL	LA H9PP	Q65111A4306	LA H9PP-JXKX-24-1-350-R18-Z	LA H9PP-JXKX-24-1
LA W5SM	Q65111A4708	LA W5SM-KXKY-24-1-400-R18-Z-VAR	LA W5SM-KXKY-24-1-Z-VAR	LA H9PP	Q65111A4306	LA H9PP-JXKX-24-1-350-R18-Z	LA H9PP-JXKX-24-1
LA W5SM	Q65111A4708	LA W5SM-KXKY-24-1-400-R18-Z-VAR	LA W5SM-KXKY-24-1-Z-VAR	KR DMLS31.	Q65112A0163	KR DMLS31.23-5K8L-26-M3W3-700-R18-Z	KR DMLS31.23-5K8L-26-M3W3
LA W5SM	Q65111A5035	LA W5SM-KXKZ-24-1-400-R18-Z-AL	LA W5SM-KXKZ-24-1-Z-AL	KR DMLS31.	Q65112A0163	KR DMLS31.23-5K8L-26-M3W3-700-R18-Z	KR DMLS31.23-5K8L-26-M3W3
LA W5SM	Q65111A5035	LA W5SM-KXKZ-24-1-400-R18-Z-AL	LA W5SM-KXKZ-24-1-Z-AL	LA H9PP	Q65111A4306	LA H9PP-JXKX-24-1-350-R18-Z	LA H9PP-JXKX-24-1
LA W5SM	Q65111A5041	LA W5SM-KXKZ-24-1-400-R18-Z-HAN	LA W5SM-KXKZ-24-1-Z-HAN	LA H9PP	Q65111A4306	LA H9PP-JXKX-24-1-350-R18-Z	LA H9PP-JXKX-24-1
LA W5SM	Q65111A5041	LA W5SM-KXKZ-24-1-400-R18-Z-HAN	LA W5SM-KXKZ-24-1-Z-HAN	KR DMLS31.	Q65112A0163	KR DMLS31.23-5K8L-26-M3W3-700-R18-Z	KR DMLS31.23-5K8L-26-M3W3
LA W5SM	Q65111A5236	LA W5SM-KXKZ-24-1-400-R18-Z-VL	LA W5SM-KXKZ-24-1-Z-VL	LA H9PP	Q65111A4306	LA H9PP-JXKX-24-1-350-R18-Z	LA H9PP-JXKX-24-1
LA W5SM	Q65111A5236	LA W5SM-KXKZ-24-1-400-R18-Z-VL	LA W5SM-KXKZ-24-1-Z-VL	KR DMLS31.	Q65112A0163	KR DMLS31.23-5K8L-26-M3W3-700-R18-Z	KR DMLS31.23-5K8L-26-M3W3
LA W5SM	Q65111A6365	LA W5SM-JZKX-24-1-400-R18-Z-HAN	LA W5SM-JZKX-24-1-HAN	KR DMLS31.	Q65112A0163	KR DMLS31.23-5K8L-26-M3W3-700-R18-Z	KR DMLS31.23-5K8L-26-M3W3



**DISCONTINUED**

**NEW (REPLACEMENT)**

<i>Product</i>	<i>QNumber</i>	<i>QNumber Description</i>	<i>Part Number</i>	<i>Product</i>	<i>QNumber</i>	<i>QNumber Description</i>	<i>Part Number</i>
LA W5SM	Q65111A6365	LA W5SM-JZKX-24-1-400-R18-Z-HAN	LA W5SM-JZKX-24-1-HAN	LA H9PP	Q65111A4306	LA H9PP-JXKX-24-1-350-R18-Z	LA H9PP-JXKX-24-1
LA W5SM	Q65111A7101	LA W5SM-JZKY-24-1-400-R18-Z-VEN	LA W5SM-JZKY-24-1-Z-VEN	KR DMLS31.	Q65112A0163	KR DMLS31.23-5K8L-26-M3W3-700-R18-Z	KR DMLS31.23-5K8L-26-M3W3
LA W5SM	Q65111A7101	LA W5SM-JZKY-24-1-400-R18-Z-VEN	LA W5SM-JZKY-24-1-Z-VEN	LA H9PP	Q65111A4306	LA H9PP-JXKX-24-1-350-R18-Z	LA H9PP-JXKX-24-1
LA W5SM	Q65112A0715	LA W5SM-JYKX-24-1-400-R18-Z-HE	LA W5SM-JYKX-24-1-Z-HE	KR DMLS31.	Q65112A0163	KR DMLS31.23-5K8L-26-M3W3-700-R18-Z	KR DMLS31.23-5K8L-26-M3W3
LA W5SM	Q65112A0715	LA W5SM-JYKX-24-1-400-R18-Z-HE	LA W5SM-JYKX-24-1-Z-HE	LA H9PP	Q65111A4306	LA H9PP-JXKX-24-1-350-R18-Z	LA H9PP-JXKX-24-1
LA W5SM	Q65112A2805	LA W5SM-JYKY-23-1-400-R18-Z		KR DMLS31.	Q65112A0163	KR DMLS31.23-5K8L-26-M3W3-700-R18-Z	KR DMLS31.23-5K8L-26-M3W3
LA W5SM	Q65112A2805	LA W5SM-JYKY-23-1-400-R18-Z		LA H9PP	Q65111A4306	LA H9PP-JXKX-24-1-350-R18-Z	LA H9PP-JXKX-24-1
LA W5SM	Q65112A5388	LA W5SM-JYKX-24-1-400-R18-Z-VL		LA H9PP	Q65111A4306	LA H9PP-JXKX-24-1-350-R18-Z	LA H9PP-JXKX-24-1
LA W5SM	Q65112A5388	LA W5SM-JYKX-24-1-400-R18-Z-VL		KR DMLS31.	Q65112A0163	KR DMLS31.23-5K8L-26-M3W3-700-R18-Z	KR DMLS31.23-5K8L-26-M3W3
LB E67C	Q65110A3172	LB E67C-Q2S1-35-1-30-R18-Z		LB E6SG	Q65112A2449	LB E6SG-T2V1-35-46-30-R18-Z	
LB E67C	Q65110A3564	LB E67C-R2T1-35-1-30-R18-Z	LB E67C-R2T1-35-Z	LB E6SG	Q65112A2449	LB E6SG-T2V1-35-46-30-R18-Z	
LB E67C	Q65110A3679	LB E67C-R2S1-35-1-30-R18-Z	LB E67C-R2S1-35-Z	LB E6SG	Q65112A2449	LB E6SG-T2V1-35-46-30-R18-Z	
LB E67C	Q65110A3984	LB E67C-R2T1-45-1-30-R18-Z	LB E67C-R2T1-45-R18-Z	LB E6SG	Q65112A2449	LB E6SG-T2V1-35-46-30-R18-Z	
LB E67C	Q65110A4236	LB E67C-R2T1-35-34-30-R18-Z-P	LB E67C-R2T1-35-34-Z-P	LB E6SG	Q65112A2449	LB E6SG-T2V1-35-46-30-R18-Z	
LB E67C	Q65110A4996	LB E67C-Q2S1-35-1-30-R18-Z-F	LB E67C-Q2S1-35-Z-F	LB E6SG	Q65112A2449	LB E6SG-T2V1-35-46-30-R18-Z	
LB E67C	Q65110A5453	LB E67C-Q2R2-34-1-30-R18-Z	LB E67C-Q2R2-34-Z	LB E6SG	Q65112A2449	LB E6SG-T2V1-35-46-30-R18-Z	
LB E67C	Q65110A6174	LB E67C-R1S2-34-1-30-R18-Z-DL	LB E67C-R1S2-34-1-DL	LB E6SG	Q65112A2449	LB E6SG-T2V1-35-46-30-R18-Z	
LB E67C	Q65110A6362	LB E67C-R2S2-35-34-30-R18-Z-MM	LB E67C-R2S2-35-34-Z-MM	LB E6SG	Q65112A2449	LB E6SG-T2V1-35-46-30-R18-Z	
LB E67C	Q65110A6363	LB E67C-R2S1-34-1-30-R18-Z	LB E67C-R2S1-34-Z	LB E6SG	Q65112A2449	LB E6SG-T2V1-35-46-30-R18-Z	
LB E67C	Q65110A6876	LB E67C-Q2S1-35-34-30-R18-ZH	LB E67C-Q2S1-35-34-ZH	LB E6SG	Q65112A2449	LB E6SG-T2V1-35-46-30-R18-Z	
LB E67C	Q65110A7053	LB E67C-R1S2-34-1-30-R18-Z	LB E67C-R1S2-34-Z	LB E6SG	Q65112A2449	LB E6SG-T2V1-35-46-30-R18-Z	
LB E67C	Q65110A7559	LB E67C-R2-4-1-30-R18-Z-XX	LB E67C-R2-4-1-Z-XX	LB E6SG	Q65112A2449	LB E6SG-T2V1-35-46-30-R18-Z	
LB E67C	Q65110A8744	LB E67C-Q2S1-35-34-30-R18-Z-VIS	LB E67C-Q2S1-35-34-Z-VIS	LB E6SG	Q65112A2449	LB E6SG-T2V1-35-46-30-R18-Z	
LB E67C	Q65110A9138	LB E67C-Q1R2-35-1-30-R18-Z	LB E67C-Q1R2-35-1-Z	LB E6SG	Q65112A2449	LB E6SG-T2V1-35-46-30-R18-Z	
LB E67C	Q65110A9140	LB E67C-Q1S2-35-1-30-R18-Z	LB E67C-Q1S2-35-1-Z	LB E6SG	Q65112A2449	LB E6SG-T2V1-35-46-30-R18-Z	
LB E67C	Q65110A9141	LB E67C-R1S2-35-1-30-R18-Z	LB E67C-R1S2-35-1-Z	LB E6SG	Q65112A2449	LB E6SG-T2V1-35-46-30-R18-Z	
LB E67C	Q65112A0868	LB E67C-R1R2-35-34-30-R18-Z-HE	LB E67C-R1S2-35-1-Z-HE	LB E6SG	Q65112A2449	LB E6SG-T2V1-35-46-30-R18-Z	
LB W5SM	Q65110A8677	LB W5SM-GXGZ-24-0-350-R18-Z	LB W5SM-GXGZ-24-Z	LB CRBP	Q65112A6186	LB CRBP-HYJZ-46-8E8F-350-S	
LB W5SM	Q65110A8887	LB W5SM-FZGZ-35-0-350-R18-Z	LB W5SM-FZGZ-35-Z	LB CRBP	Q65112A6186	LB CRBP-HYJZ-46-8E8F-350-S	
LB W5SM	Q65110A9221	LB W5SM-FZHX-35-0-350-R18-Z	LB W5SM-FZHX-35-Z	LB CRBP	Q65112A6186	LB CRBP-HYJZ-46-8E8F-350-S	
LB W5SM	Q65110A9262	LB W5SM-FZHX-34-0-350-R18-Z	LB W5SM-FZHX-34-Z	LB CRBP	Q65112A6186	LB CRBP-HYJZ-46-8E8F-350-S	
LB W5SM	Q65111A1368	LB W5SM-GYHX-45-0-350-R18-Z-XX	LB W5SM-GYHX-45-Z-XX	LB CRBP	Q65112A6186	LB CRBP-HYJZ-46-8E8F-350-S	
LB W5SM	Q65111A5488	LB W5SM-GXGZ-35-0-350-R18-Z-STA	LB W5SM-GXGZ-35-Z-STA	LB CRBP	Q65112A6186	LB CRBP-HYJZ-46-8E8F-350-S	
LB W5SM	Q65112A6173	LB W5SM-GXGZ-35-0-350-R18-Z-ST2		LB CRBP	Q65112A6186	LB CRBP-HYJZ-46-8E8F-350-S	
LCW G5GP	Q65110A9079	LCW G5GP-FYGY-5R8T-0-100-R18-Z	LCW G5GP-FYGY-5R8T-Z	LCW G6CP	Q65111A0079	LCW G6CP-DAFA-4R9T-0-140-R18-Z	LCW G6CP-DAFA-4R9T-Z
LCW G5GP	Q65110A9081	LCW G5GP-FZHX-5L7N-0-100-R18-Z	LCW G5GP-FZHX-5L7N-Z	LCW G6CP	Q65111A0082	LCW G6CP-DAFA-4L8N-0-140-R18-Z	LCW G6CP-DAFA-4L8N-Z
LCW G5GP	Q65110A9866	LCW G5GP-FZHY-5R8T-0-100-R18-Z	LCW G5GP-FZHY-5R8T-Z	LCW G6CP	Q65111A0079	LCW G6CP-DAFA-4R9T-0-140-R18-Z	LCW G6CP-DAFA-4R9T-Z
LCW G5GP	Q65111A0025	LCW G5GP-GXGZ-5R8T-0-100-R18-Z	LCW G5GP-GXGZ-5R8T-Z	LCW G6CP	Q65111A0079	LCW G6CP-DAFA-4R9T-0-140-R18-Z	LCW G6CP-DAFA-4R9T-Z
LCW G5GP	Q65111A0078	LCW G5GP-FZHX-5N8O-0-100-R18-Z	LCW G5GP-FZHX-5N8O-Z	LCW G6CP	Q65111A0082	LCW G6CP-DAFA-4L8N-0-140-R18-Z	LCW G6CP-DAFA-4L8N-Z
LCW G5GP	Q65111A0385	LCW G5GP-GXGZ-6M7N-0-100-R18-ZTC-XX	LCW G5GP-GXGZ-6M7N-ZT-XX	LCW G6CP	Q65111A0082	LCW G6CP-DAFA-4L8N-0-140-R18-Z	LCW G6CP-DAFA-4L8N-Z
LCW G5GP	Q65111A0448	LCW G5GP-GXHX-5L7N-0-100-R18-Z	LCW G5GP-GXHX-5L7N-Z	LCW G6CP	Q65111A0082	LCW G6CP-DAFA-4L8N-0-140-R18-Z	LCW G6CP-DAFA-4L8N-Z
LCW G5GP	Q65111A0631	LCW G5GP-GXGZ-6R7S-0-100-R18-ZT-XX	LCW G5GP-GXGZ-6R7S-ZT-XX	LCW G6CP	Q65111A0079	LCW G6CP-DAFA-4R9T-0-140-R18-Z	LCW G6CP-DAFA-4R9T-Z
LCW G5GP	Q65111A0732	LCW G5GP-GXGZ-6R7T-0-100-R18-Z-LM	LCW G5GP-GXGZ-6R7T-Z-LM	LCW G6CP	Q65111A0079	LCW G6CP-DAFA-4R9T-0-140-R18-Z	LCW G6CP-DAFA-4R9T-Z
LCW G5GP	Q65111A0973	LCW G5GP-FZHY-5O8Q-0-100-R18-Z-XX	LCW G5GP-FZHY-5O8Q-Z-XX	LCW G6CP	Q65111A0083	LCW G6CP-DAFA-4O9Q-0-140-R18-Z	LCW G6CP-DAFA-4O9Q-Z

**DISCONTINUED**

**NEW (REPLACEMENT)**

<b>Product</b>	<b>QNumber</b>	<b>QNumber Description</b>	<b>Part Number</b>	<b>Product</b>	<b>QNumber</b>	<b>QNumber Description</b>	<b>Part Number</b>
LCW G5GP	Q65111A1092	LCW G5GP-GXHY-5R7S-0-100-R18-Z-XX	LCW G5GP-GXHY-5R7S-Z-XX	LCW G6CP	Q65111A0079	LCW G6CP-DAFA-4R9T-0-140-R18-Z	LCW G6CP-DAFA-4R9T-Z
LCW G5GP	Q65111A1093	LCW G5GP-GXHY-5L7M-0-100-R18-Z-XX	LCW G5GP-GXHY-5L7M-Z-XX	LCW G6CP	Q65111A0082	LCW G6CP-DAFA-4L8N-0-140-R18-Z	LCW G6CP-DAFA-4L8N-Z
LCW G5GP	Q65111A1249	LCW G5GP-FZHY-6S8T-0-100-R18-Z	LCW G5GP-FZHY-6S8T-Z	LCW G6CP	Q65111A0079	LCW G6CP-DAFA-4R9T-0-140-R18-Z	LCW G6CP-DAFA-4R9T-Z
LCW G5GP	Q65111A1693	LCW G5GP-GXHX-5L7N-0-100-R18-Z-LM	LCW G5GP-GXHX-5L7N-LM	LCW G6CP	Q65111A0082	LCW G6CP-DAFA-4L8N-0-140-R18-Z	LCW G6CP-DAFA-4L8N-Z
LCW G5GP	Q65111A1694	LCW G5GP-GUJP-6L8N-K-100-Z-DA	LCW G5GP-GUJP-6L8N-K-DA	LCW G6CP	Q65111A0082	LCW G6CP-DAFA-4L8N-0-140-R18-Z	LCW G6CP-DAFA-4L8N-Z
LCW G5GP	Q65111A2112	LCW G5GP-GXGY-5L7N-0-100-R18-Z	LCW G5GP-GXGY-5L7N-Z	LCW G6CP	Q65111A0082	LCW G6CP-DAFA-4L8N-0-140-R18-Z	LCW G6CP-DAFA-4L8N-Z
LCW G5GP	Q65111A3951	LCW G5GP-GXGZ-6L7N-0-100-Z-CK	LCW G5GP-GXGZ-6L7N-Z-CK	LCW G6CP	Q65111A0082	LCW G6CP-DAFA-4L8N-0-140-R18-Z	LCW G6CP-DAFA-4L8N-Z
LCW G5GP	Q65111A3952	LCW G5GP-FZGY-6O7Q-0-100-Z-CK	LCW G5GP-FZGY-6O7Q-Z-CK	LCW G6CP	Q65111A0083	LCW G6CP-DAFA-4O9Q-0-140-R18-Z	LCW G6CP-DAFA-4O9Q-Z
LCW G5GP	Q65111A3953	LCW G5GP-FZGY-6R7T-0-100-Z-CK	LCW G5GP-FZGY-6R7T-Z-CK	LCW G6CP	Q65111A0079	LCW G6CP-DAFA-4R9T-0-140-R18-Z	LCW G6CP-DAFA-4R9T-Z
LCW G5GP	Q65111A3954	LCW G5GP-FZGY-6U8W-0-100-Z-CK	LCW G5GP-FZGY-6U8W-Z-CK	LCW G6CP	Q65111A0080	LCW G6CP-DAFA-4U9X-0-140-R18-Z	LCW G6CP-DAFA-4U9X-Z
LCW G5GP	Q65111A4445	LCW G5GP-FZGY-6S7T-0-100-Z-XX	LCW G5GP-FZGY-6S7T-XX	LCW G6CP	Q65111A0079	LCW G6CP-DAFA-4R9T-0-140-R18-Z	LCW G6CP-DAFA-4R9T-Z
LCW W5SM	Q65110A8237	LCW W5SM-JXKX-4R9T-0-350-R18-ZG-HE	LCW W5SM-JXJZ-4R9T-ZG-HE	LUW HWQP	Q65112A6099	LUW HWQP-5N8N-ebvF46fcbB46-8E8H-1A-S	
LCW W5SM	Q65110A9681	LCW W5SM-JXKY-4O9Q-0-350-R18-Z	LCW W5SM-JXKY-4O9Q-Z	LUW HWQP	Q65112A6099	LUW HWQP-5N8N-ebvF46fcbB46-8E8H-1A-S	
LCW W5SM	Q65110A9692	LCW W5SM-JXKX-4U9X-0-350-R18-Z	LCW W5SM-JXKX-4U9X-Z	LUW HWQP	Q65112A6099	LUW HWQP-5N8N-ebvF46fcbB46-8E8H-1A-S	
LCW W5SM	Q65110A9693	LCW W5SM-JYKY-4R9T-0-350-R18-Z	LCW W5SM-JYKY-4R9T-Z	LUW HWQP	Q65112A6099	LUW HWQP-5N8N-ebvF46fcbB46-8E8H-1A-S	
LCW W5SM	Q65110A9694	LCW W5SM-JYKY-4L8N-0-350-R18-Z	LCW W5SM-JYKY-4L8N-Z	LUW HWQP	Q65112A6099	LUW HWQP-5N8N-ebvF46fcbB46-8E8H-1A-S	
LCW W5SM	Q65110A9698	LCW W5SM-JYKZ-4J8K-0-350-R18-Z	LCW W5SM-JYKZ-4J8K-Z	LUW HWQP	Q65112A6099	LUW HWQP-5N8N-ebvF46fcbB46-8E8H-1A-S	
LCW W5SM	Q65110A9993	LCW W5SM-JYKX-6Q7R-0-350-R18-ZG-HE	LCW W5SM-JYKX-6Q7R-ZG-HE	LUW HWQP	Q65112A6099	LUW HWQP-5N8N-ebvF46fcbB46-8E8H-1A-S	
LCW W5SM	Q65111A1689	LCW W5SM-JZKX-5S7T-0-350-R18-Z-XX	LCW W5SM-JZKX-5S7T-Z-XX	LUW HWQP	Q65112A6099	LUW HWQP-5N8N-ebvF46fcbB46-8E8H-1A-S	
LCW W5SM	Q65111A2223	LCW W5SM-JZKY-6R7T-0-350-R18-Z-HE		LUW HWQP	Q65112A6099	LUW HWQP-5N8N-ebvF46fcbB46-8E8H-1A-S	
LCW W5SM	Q65111A3074	LCW W5SM-JZKX-6R7T-0-350-R18-ZG-LM	LCW W5SM-JZKX-6R7T-LM	LUW HWQP	Q65112A6099	LUW HWQP-5N8N-ebvF46fcbB46-8E8H-1A-S	
LCW W5SM	Q65111A3959	LCW W5SM-KXKZ-6M7N-0-350-R18-IND	LCW W5SM-KXKZ-6M7N-IND	LUW HWQP	Q65112A6099	LUW HWQP-5N8N-ebvF46fcbB46-8E8H-1A-S	
LCW W5SM	Q65111A9071	LCW W5SM-KXKY-5S6U-0-350-R18-T-Z-SF	LCW W5SM-KXKY-5S6U-T-Z-SF	LUW HWQP	Q65112A6099	LUW HWQP-5N8N-ebvF46fcbB46-8E8H-1A-S	
LCW W5SM	Q65112A0720	LCW W5SM-JYKY-4L8N-0-350-R18-Z-HE	LCW W5SM-JYKY-4L8N-Z-HE	LUW HWQP	Q65112A6099	LUW HWQP-5N8N-ebvF46fcbB46-8E8H-1A-S	
LCW W5SM	Q65112A8213	LCW W5SM-HZKY-6R7S-0-350-R18-Z-XX		LUW HWQP	Q65112A6099	LUW HWQP-5N8N-ebvF46fcbB46-8E8H-1A-S	
LCY W5SM	Q65111A0481	LCY W5SM-HZJY-5E-1-350-R18-Z-AL	LCY W5SM-HZJY-5E-1-Z-AL				
LCY W5SM	Q65111A0481	LCY W5SM-HZJY-5E-1-350-R18-Z-AL	LCY W5SM-HZJY-5E-1-Z-AL	LCY H9PP	Q65111A4118	LCY H9PP-7J6K-5F5G-1-350-R18-Z	LCY H9PP-7J6K-5F5G-1
LCY W5SM	Q65111A0481	LCY W5SM-HZJY-5E-1-350-R18-Z-AL	LCY W5SM-HZJY-5E-1-Z-AL	KY DMLS31.	Q65112A3956	KY DMLS31.FY-Z8KF6-5F-8E8G-600-S	
LCY W5SM	Q65111A1327	LCY W5SM-JXJY-5E-1-350-R18-Z-XX	LCY W5SM-JXJY-5E-Z-XX	KY DMLS31.	Q65112A3956	KY DMLS31.FY-Z8KF6-5F-8E8G-600-S	
LCY W5SM	Q65111A1327	LCY W5SM-JXJY-5E-1-350-R18-Z-XX	LCY W5SM-JXJY-5E-Z-XX	LCY H9PP	Q65111A4118	LCY H9PP-7J6K-5F5G-1-350-R18-Z	LCY H9PP-7J6K-5F5G-1
LCY W5SM	Q65111A1327	LCY W5SM-JXJY-5E-1-350-R18-Z-XX	LCY W5SM-JXJY-5E-Z-XX				
LCY W5SM	Q65111A1987	LCY W5SM-JXJZ-5E-1-350-R18-Z	LCY W5SM-JXJZ-5E-Z				
LCY W5SM	Q65111A1987	LCY W5SM-JXJZ-5E-1-350-R18-Z	LCY W5SM-JXJZ-5E-Z	KY DMLS31.	Q65112A3956	KY DMLS31.FY-Z8KF6-5F-8E8G-600-S	
LCY W5SM	Q65111A1987	LCY W5SM-JXJZ-5E-1-350-R18-Z	LCY W5SM-JXJZ-5E-Z	LCY H9PP	Q65111A4118	LCY H9PP-7J6K-5F5G-1-350-R18-Z	LCY H9PP-7J6K-5F5G-1
LCY W5SM	Q65111A2605	LCY W5SM-HZJZ-5E-1-350-R18-Z	LCY W5SM-HZJZ-5E-1	LCY H9PP	Q65111A4118	LCY H9PP-7J6K-5F5G-1-350-R18-Z	LCY H9PP-7J6K-5F5G-1
LCY W5SM	Q65111A2605	LCY W5SM-HZJZ-5E-1-350-R18-Z	LCY W5SM-HZJZ-5E-1	KY DMLS31.	Q65112A3956	KY DMLS31.FY-Z8KF6-5F-8E8G-600-S	
LCY W5SM	Q65111A2605	LCY W5SM-HZJZ-5E-1-350-R18-Z	LCY W5SM-HZJZ-5E-1				
LCY W5SM	Q65111A3885	LCY W5SM-JYKX-5E-1-350-R18-Z-XX	LCY W5SM-JYKX-5E-1-Z-XX	LCY H9PP	Q65111A4118	LCY H9PP-7J6K-5F5G-1-350-R18-Z	LCY H9PP-7J6K-5F5G-1
LCY W5SM	Q65111A3885	LCY W5SM-JYKX-5E-1-350-R18-Z-XX	LCY W5SM-JYKX-5E-1-Z-XX	KY DMLS31.	Q65112A3956	KY DMLS31.FY-Z8KF6-5F-8E8G-600-S	
LCY W5SM	Q65111A3885	LCY W5SM-JYKX-5E-1-350-R18-Z-XX	LCY W5SM-JYKX-5E-1-Z-XX				
LCY W5SM	Q65111A9825	LCY W5SM-JYKX-5E-1-350-R18-Z-STA	LCY W5SM-JYKX-5E-1-Z-STA	KY DMLS31.	Q65112A3956	KY DMLS31.FY-Z8KF6-5F-8E8G-600-S	
LCY W5SM	Q65111A9825	LCY W5SM-JYKX-5E-1-350-R18-Z-STA	LCY W5SM-JYKX-5E-1-Z-STA				
LCY W5SM	Q65111A9825	LCY W5SM-JYKX-5E-1-350-R18-Z-STA	LCY W5SM-JYKX-5E-1-Z-STA	LCY H9PP	Q65111A4118	LCY H9PP-7J6K-5F5G-1-350-R18-Z	LCY H9PP-7J6K-5F5G-1
LCY W5SM	Q65111A9826	LCY W5SM-JYKX-5E-1-350-R18-Z-ST1	LCY W5SM-JYKX-5E-1-Z-ST1	KY DMLS31.	Q65112A3956	KY DMLS31.FY-Z8KF6-5F-8E8G-600-S	

**DISCONTINUED**

**NEW (REPLACEMENT)**

<b>Product</b>	<b>QNumber</b>	<b>QNumber Description</b>	<b>Part Number</b>	<b>Product</b>	<b>QNumber</b>	<b>QNumber Description</b>	<b>Part Number</b>
LCY W5SM	Q65111A9826	LCY W5SM-JYKX-5E-1-350-R18-Z-ST1	LCY W5SM-JYKX-5E-1-Z-ST1	LCY H9PP	Q65111A4118	LCY H9PP-7J6K-5F5G-1-350-R18-Z	LCY H9PP-7J6K-5F5G-1
LCY W5SM	Q65111A9826	LCY W5SM-JYKX-5E-1-350-R18-Z-ST1	LCY W5SM-JYKX-5E-1-Z-ST1				
LCY W5SM	Q65111A9827	LCY W5SM-JXJZ-5E-1-350-R18-Z-STA	LCY W5SM-JXJZ-5E-1-Z-STA	KY DMLS31.	Q65112A3956	KY DMLS31.FY-Z8KF6-5F-8E8G-600-S	
LCY W5SM	Q65111A9827	LCY W5SM-JXJZ-5E-1-350-R18-Z-STA	LCY W5SM-JXJZ-5E-1-Z-STA	LCY H9PP	Q65111A4118	LCY H9PP-7J6K-5F5G-1-350-R18-Z	LCY H9PP-7J6K-5F5G-1
LCY W5SM	Q65111A9827	LCY W5SM-JXJZ-5E-1-350-R18-Z-STA	LCY W5SM-JXJZ-5E-1-Z-STA				
LCY W5SM	Q65111A9828	LCY W5SM-JXJZ-5E-1-350-R18-Z-ST1	LCY W5SM-JXJZ-5E-1-Z-ST1				
LCY W5SM	Q65111A9828	LCY W5SM-JXJZ-5E-1-350-R18-Z-ST1	LCY W5SM-JXJZ-5E-1-Z-ST1	KY DMLS31.	Q65112A3956	KY DMLS31.FY-Z8KF6-5F-8E8G-600-S	
LCY W5SM	Q65111A9828	LCY W5SM-JXJZ-5E-1-350-R18-Z-ST1	LCY W5SM-JXJZ-5E-1-Z-ST1	LCY H9PP	Q65111A4118	LCY H9PP-7J6K-5F5G-1-350-R18-Z	LCY H9PP-7J6K-5F5G-1
LCY W5SM	Q65112A5392	LCY W5SM-JXJZ-5E-1-350-R18-ZI-AL		LCY H9PP	Q65111A4118	LCY H9PP-7J6K-5F5G-1-350-R18-Z	LCY H9PP-7J6K-5F5G-1
LCY W5SM	Q65112A5392	LCY W5SM-JXJZ-5E-1-350-R18-ZI-AL					
LCY W5SM	Q65112A5392	LCY W5SM-JXJZ-5E-1-350-R18-ZI-AL		KY DMLS31.	Q65112A3956	KY DMLS31.FY-Z8KF6-5F-8E8G-600-S	
LCY W5SM	Q65112A6125	LCY W5SM-JYKX-5E-1-350-R18-Z-ST2		LCY H9PP	Q65111A4118	LCY H9PP-7J6K-5F5G-1-350-R18-Z	LCY H9PP-7J6K-5F5G-1
LCY W5SM	Q65112A6125	LCY W5SM-JYKX-5E-1-350-R18-Z-ST2					
LCY W5SM	Q65112A6125	LCY W5SM-JYKX-5E-1-350-R18-Z-ST2		KY DMLS31.	Q65112A3956	KY DMLS31.FY-Z8KF6-5F-8E8G-600-S	
LCY W5SM	Q65112A6126	LCY W5SM-JXJZ-5E-1-350-R18-Z-ST2					
LCY W5SM	Q65112A6126	LCY W5SM-JXJZ-5E-1-350-R18-Z-ST2		KY DMLS31.	Q65112A3956	KY DMLS31.FY-Z8KF6-5F-8E8G-600-S	
LCY W5SM	Q65112A6126	LCY W5SM-JXJZ-5E-1-350-R18-Z-ST2		LCY H9PP	Q65111A4118	LCY H9PP-7J6K-5F5G-1-350-R18-Z	LCY H9PP-7J6K-5F5G-1
LD W5SM	Q65110A9216	LD W5SM-4S4T-35-0-350-R18-Z	LD W5SM-4S4T-35-Z	LB CRBP	Q65112A6186	LB CRBP-HYJZ-46-8E8F-350-S	
LMW G5AP	Q65110A9418	LMW G5AP-7C8D-NZN6-DF-LH-100-R18-Z	LMW G5AP-7C8D-NZN6-DF-LH-Z				
LMW G5AP	Q65111A1246	LMW G5AP-5D7D-N5N7-E-LM-100-R18-ZD-XX	LMW G5AP-5D7D-N5N7-E-LM-ZD-XX				
LP E675	Q65110A2334	LP E675-P1Q2-25-0-50-R18-Z	LP E675-P1Q2-25-Z	LP T676	Q65112A6087	LP T676-L2N1-25-0-20-R18-Z	
LP E675	Q65110A4971	LP E675-P1Q2-34-0-50-R18-Z	LP E675-P1Q2-34-Z	LP T676	Q65112A6087	LP T676-L2N1-25-0-20-R18-Z	
LP E675	Q65110A5000	LP E675-P1Q2-25-0-50-R18-Z-F	LP E675-P1Q2-25-Z-F	LP T676	Q65112A6087	LP T676-L2N1-25-0-20-R18-Z	
LP E675	Q65110A5356	LP E675-P2Q2-35-0-50-R18-Z-DL	LP E675-P2Q2-35-Z-DL	LP T676	Q65112A6087	LP T676-L2N1-25-0-20-R18-Z	
LP E675	Q65110A7298	LP E675-P2R1-25-0-50-R18-Z	LP E675-P2R1-25-Z	LP T676	Q65112A6087	LP T676-L2N1-25-0-20-R18-Z	
LP E675	Q65110A7635	LP E675-P2Q2-34-0-50-R18-Z-DL	LP E675-P2Q2-34-Z-DL	LP T676	Q65112A6087	LP T676-L2N1-25-0-20-R18-Z	
LP E675	Q65110A7960	LP E675-Q1Q2-35-0-50-R18-Z-JC	LP E675-Q1Q2-35-Z-JC	LP T676	Q65112A6087	LP T676-L2N1-25-0-20-R18-Z	
LP E675	Q65110A8267	LP E675-Q1Q2-25-0-50-R18-Z-VL	LP E675-Q1Q2-25-Z-VL	LP T676	Q65112A6087	LP T676-L2N1-25-0-20-R18-Z	
LP E675	Q65110A8277	LP E675-Q1R1-34-0-50-R18-Z-HE	LP E675-Q1R1-34-Z-HE	LP T676	Q65112A6087	LP T676-L2N1-25-0-20-R18-Z	
LP E675	Q65110A8456	LP E675-Q1Q2-34-0-50-R18-Z	LP E675-Q1Q2-34-Z	LP T676	Q65112A6087	LP T676-L2N1-25-0-20-R18-Z	
LP E675	Q65111A7924	LP E675-P2Q2-34-0-50-R18-Z-XX	LP E675-P2Q2-34-XX	LP T676	Q65112A6087	LP T676-L2N1-25-0-20-R18-Z	
LR W5SM	Q65111A2216	LR W5SM-JXJZ-1-1-400-R18-Z-AL	LR W5SM-JXJZ-1-1-Z-AL	KR DMLS31.	Q65112A0163	KR DMLS31.23-5K8L-26-M3W3-700-R18-Z	KR DMLS31.23-5K8L-26-M3W3
LR W5SM	Q65111A2216	LR W5SM-JXJZ-1-1-400-R18-Z-AL	LR W5SM-JXJZ-1-1-Z-AL	LR H9PP	Q65111A4286	LR H9PP-HZJZ-1-1-350-R18-Z	LR H9PP-HZJZ-1-1
LR W5SM	Q65111A2604	LR W5SM-HZJZ-1-1-400-R18-Z	LR W5SM-HZJZ-1-1	LR H9PP	Q65111A4286	LR H9PP-HZJZ-1-1-350-R18-Z	LR H9PP-HZJZ-1-1
LR W5SM	Q65111A2604	LR W5SM-HZJZ-1-1-400-R18-Z	LR W5SM-HZJZ-1-1	KR DMLS31.	Q65112A0163	KR DMLS31.23-5K8L-26-M3W3-700-R18-Z	KR DMLS31.23-5K8L-26-M3W3
LR W5SM	Q65111A3884	LR W5SM-JYKX-1-1-400-R18-Z-AL	LR W5SM-JYKX-1-1-Z-AL	KR DMLS31.	Q65112A0163	KR DMLS31.23-5K8L-26-M3W3-700-R18-Z	KR DMLS31.23-5K8L-26-M3W3
LR W5SM	Q65111A3884	LR W5SM-JYKX-1-1-400-R18-Z-AL	LR W5SM-JYKX-1-1-Z-AL	LR H9PP	Q65111A4286	LR H9PP-HZJZ-1-1-350-R18-Z	LR H9PP-HZJZ-1-1
LR W5SM	Q65111A5500	LR W5SM-JXJZ-1-1-400-R18-Z-XIN	LR W5SM-JXJZ-1-1-Z-XIN	LR H9PP	Q65111A4286	LR H9PP-HZJZ-1-1-350-R18-Z	LR H9PP-HZJZ-1-1
LR W5SM	Q65111A5500	LR W5SM-JXJZ-1-1-400-R18-Z-XIN	LR W5SM-JXJZ-1-1-Z-XIN	KR DMLS31.	Q65112A0163	KR DMLS31.23-5K8L-26-M3W3-700-R18-Z	KR DMLS31.23-5K8L-26-M3W3
LR W5SM	Q65111A7729	LR W5SM-JXJZ-1-1-400-R18-Z-XX	LR W5SM-JXJZ-1-1-XX	KR DMLS31.	Q65112A0163	KR DMLS31.23-5K8L-26-M3W3-700-R18-Z	KR DMLS31.23-5K8L-26-M3W3
LR W5SM	Q65111A7729	LR W5SM-JXJZ-1-1-400-R18-Z-XX	LR W5SM-JXJZ-1-1-XX	LR H9PP	Q65111A4286	LR H9PP-HZJZ-1-1-350-R18-Z	LR H9PP-HZJZ-1-1
LR W5SM	Q65111A8112	LR W5SM-JXJY-1-1-400-R18-Z-AL	LR W5SM-JXJY-1-1-Z-AL	KR DMLS31.	Q65112A0163	KR DMLS31.23-5K8L-26-M3W3-700-R18-Z	KR DMLS31.23-5K8L-26-M3W3
LR W5SM	Q65111A8112	LR W5SM-JXJY-1-1-400-R18-Z-AL	LR W5SM-JXJY-1-1-Z-AL	LR H9PP	Q65111A4286	LR H9PP-HZJZ-1-1-350-R18-Z	LR H9PP-HZJZ-1-1
LT E67C	Q65110A1868	LT E67C-T1U2-35-1-30-R18-Z	LT E67C-T1U2-35-1-Z	LT E6SG	Q65111A0322	LT E6SG-AABB-35-1-30-R18-Z	LT E6SG-AABB-35-1-Z



**DISCONTINUED**

**NEW (REPLACEMENT)**

<i>Product</i>	<i>QNumber</i>	<i>QNumber Description</i>	<i>Part Number</i>	<i>Product</i>	<i>QNumber</i>	<i>QNumber Description</i>	<i>Part Number</i>
LT E67C	Q65110A1868	LT E67C-T1U2-35-1-30-R18-Z	LT E67C-T1U2-35-1-Z	LT T67C	Q65110A1983	LT T67C-S2V1-35-0-20-R18-Z	LT T67C-S2V1-35-Z
LT E67C	Q65110A1869	LT E67C-U1V2-35-1-30-R18-Z	LT E67C-U1V2-35-1-Z	LT T67C	Q65110A1983	LT T67C-S2V1-35-0-20-R18-Z	LT T67C-S2V1-35-Z
LT E67C	Q65110A1869	LT E67C-U1V2-35-1-30-R18-Z	LT E67C-U1V2-35-1-Z	LT E6SG	Q65111A0322	LT E6SG-AABB-35-1-30-R18-Z	LT E6SG-AABB-35-1-Z
LT E67C	Q65110A1982	LT E67C-T1V2-35-1-30-R18-Z	LT E67C-T1V2-35-1-Z	LT T67C	Q65110A1983	LT T67C-S2V1-35-0-20-R18-Z	LT T67C-S2V1-35-Z
LT E67C	Q65110A1982	LT E67C-T1V2-35-1-30-R18-Z	LT E67C-T1V2-35-1-Z	LT E6SG	Q65111A0322	LT E6SG-AABB-35-1-30-R18-Z	LT E6SG-AABB-35-1-Z
LT E67C	Q65110A3192	LT E67C-T2V1-35-1-30-R18-Z		LT T67C	Q65110A1983	LT T67C-S2V1-35-0-20-R18-Z	LT T67C-S2V1-35-Z
LT E67C	Q65110A3192	LT E67C-T2V1-35-1-30-R18-Z		LT E6SG	Q65111A0322	LT E6SG-AABB-35-1-30-R18-Z	LT E6SG-AABB-35-1-Z
LT E67C	Q65110A3692	LT E67C-U2V1-35-1-30-R18-Z	LT E67C-U2V1-35-1-Z	LT T67C	Q65110A1983	LT T67C-S2V1-35-0-20-R18-Z	LT T67C-S2V1-35-Z
LT E67C	Q65110A3692	LT E67C-U2V1-35-1-30-R18-Z	LT E67C-U2V1-35-1-Z	LT E6SG	Q65111A0322	LT E6SG-AABB-35-1-30-R18-Z	LT E6SG-AABB-35-1-Z
LT E67C	Q65110A3848	LT E67C-U2V1-45-1-30-R18-Z-LM		LT T67C	Q65110A1983	LT T67C-S2V1-35-0-20-R18-Z	LT T67C-S2V1-35-Z
LT E67C	Q65110A3848	LT E67C-U2V1-45-1-30-R18-Z-LM		LT E6SG	Q65111A0322	LT E6SG-AABB-35-1-30-R18-Z	LT E6SG-AABB-35-1-Z
LT E67C	Q65110A6360	LT E67C-U2V2-35-1-30-R18-Z-MM	LT E67C-U2V2-35-1-Z-MM	LT E6SG	Q65111A0322	LT E6SG-AABB-35-1-30-R18-Z	LT E6SG-AABB-35-1-Z
LT E67C	Q65110A6360	LT E67C-U2V2-35-1-30-R18-Z-MM	LT E67C-U2V2-35-1-Z-MM	LT T67C	Q65110A1983	LT T67C-S2V1-35-0-20-R18-Z	LT T67C-S2V1-35-Z
LT E67C	Q65110A6361	LT E67C-U2V1-45-1-30-R18-Z	LT E67C-U2V1-45-1-Z	LT T67C	Q65110A1983	LT T67C-S2V1-35-0-20-R18-Z	LT T67C-S2V1-35-Z
LT E67C	Q65110A6361	LT E67C-U2V1-45-1-30-R18-Z	LT E67C-U2V1-45-1-Z	LT E6SG	Q65111A0322	LT E6SG-AABB-35-1-30-R18-Z	LT E6SG-AABB-35-1-Z
LT E67C	Q65110A7050	LT E67C-U1V2-34-34-30-R18-Z	LT E67C-U1V2-34-34-Z	LT E6SG	Q65111A0322	LT E6SG-AABB-35-1-30-R18-Z	LT E6SG-AABB-35-1-Z
LT E67C	Q65110A7050	LT E67C-U1V2-34-34-30-R18-Z	LT E67C-U1V2-34-34-Z	LT T67C	Q65110A1983	LT T67C-S2V1-35-0-20-R18-Z	LT T67C-S2V1-35-Z
LT E67C	Q65110A8539	LT E67C-U1V1-35-34-30-R18-ZH	LT E67C-U1V1-35-34-30-R18-ZH	LT T67C	Q65110A1983	LT T67C-S2V1-35-0-20-R18-Z	LT T67C-S2V1-35-Z
LT E67C	Q65110A8539	LT E67C-U1V1-35-34-30-R18-ZH	LT E67C-U1V1-35-34-30-R18-ZH	LT E6SG	Q65111A0322	LT E6SG-AABB-35-1-30-R18-Z	LT E6SG-AABB-35-1-Z
LT E67C	Q65111A1024	LT E67C-U1V1-35-1-30-R18-Z	LT E67C-U1V1-35-1-Z	LT T67C	Q65110A1983	LT T67C-S2V1-35-0-20-R18-Z	LT T67C-S2V1-35-Z
LT E67C	Q65111A1024	LT E67C-U1V1-35-1-30-R18-Z	LT E67C-U1V1-35-1-Z	LT E6SG	Q65111A0322	LT E6SG-AABB-35-1-30-R18-Z	LT E6SG-AABB-35-1-Z
LT E67C	Q65111A4498	LT E67C-V1V2-5-1-30-R18-Z-M	LT E67C-V1V2-5-1-30-M	LT E6SG	Q65111A0322	LT E6SG-AABB-35-1-30-R18-Z	LT E6SG-AABB-35-1-Z
LT E67C	Q65111A4498	LT E67C-V1V2-5-1-30-R18-Z-M	LT E67C-V1V2-5-1-30-M	LT T67C	Q65110A1983	LT T67C-S2V1-35-0-20-R18-Z	LT T67C-S2V1-35-Z
LT W5SM	Q65110A8417	LT W5SM-JXXK-36-0-350-R18-Z	LT W5SM-JXXK-36-Z	KT DMLN31.	Q65112A3520	KT DMLN31.13-8F5H-36-L6E2-65-S	
LT W5SM	Q65110A8417	LT W5SM-JXXK-36-0-350-R18-Z	LT W5SM-JXXK-36-Z	LT CQBP	Q65112A3581	LT CQBP-KYLY-36-8E8G-350-S	
LT W5SM	Q65110A9212	LT W5SM-JYKY-25-0-350-R18-Z	LT W5SM-JYKY-25	KT DMLN31.	Q65112A3520	KT DMLN31.13-8F5H-36-L6E2-65-S	
LT W5SM	Q65110A9212	LT W5SM-JYKY-25-0-350-R18-Z	LT W5SM-JYKY-25	LT CQBP	Q65112A3581	LT CQBP-KYLY-36-8E8G-350-S	
LT W5SM	Q65110A9251	LT W5SM-JYKY-45-0-350-R18-Z-XX	LT W5SM-JYKY-45-Z-XX	LT CQBP	Q65112A3581	LT CQBP-KYLY-36-8E8G-350-S	
LT W5SM	Q65110A9251	LT W5SM-JYKY-45-0-350-R18-Z-XX	LT W5SM-JYKY-45-Z-XX	KT DMLN31.	Q65112A3520	KT DMLN31.13-8F5H-36-L6E2-65-S	
LT W5SM	Q65110A9703	LT W5SM-KXKZ-45-0-350-R18-Z	LT W5SM-KXKZ-45-Z	KT DMLN31.	Q65112A3520	KT DMLN31.13-8F5H-36-L6E2-65-S	
LT W5SM	Q65110A9703	LT W5SM-KXKZ-45-0-350-R18-Z	LT W5SM-KXKZ-45-Z	LT CQBP	Q65112A3581	LT CQBP-KYLY-36-8E8G-350-S	
LT W5SM	Q65111A3804	LT W5SM-KXKY-34-0-350-R18-Z	LT W5SM-KXKY-34-Z	LT CQBP	Q65112A3581	LT CQBP-KYLY-36-8E8G-350-S	
LT W5SM	Q65111A3804	LT W5SM-KXKY-34-0-350-R18-Z	LT W5SM-KXKY-34-Z	KT DMLN31.	Q65112A3520	KT DMLN31.13-8F5H-36-L6E2-65-S	
LT W5SM	Q65112A1232	LT W5SM-KXKY-34-0-350-R18-Z-HE	LT W5SM-KXKY-34-Z-HE	LT CQBP	Q65112A3581	LT CQBP-KYLY-36-8E8G-350-S	
LT W5SM	Q65112A1232	LT W5SM-KXKY-34-0-350-R18-Z-HE	LT W5SM-KXKY-34-Z-HE	KT DMLN31.	Q65112A3520	KT DMLN31.13-8F5H-36-L6E2-65-S	
LUW G5GP	Q65110A9093	LUW G5GP-GXHY-5C8E-0-100-R18-Z	LUW G5GP-GXHY-5C8E-Z	LUW GVCP	Q65111A6900	LUW GVCP-EBFB-GMKM-24E4-140-R18-Z	LUW GVCP-EBFB-GMKM-24E4
LUW G5GP	Q65110A9462	LUW G5GP-GZHX-5C8E-0-100-R18-Z-XX	LUW G5GP-GZHX-5C8E-Z-XX	LUW GVCP	Q65111A6900	LUW GVCP-EBFB-GMKM-24E4-140-R18-Z	LUW GVCP-EBFB-GMKM-24E4
LUW G5GP	Q65110A9884	LUW G5GP-GZHY-5E8G-0-100-R18-Z-XX	LUW G5GP-GZHY-5E8G-Z-XX	LUW GVCP	Q65111A6900	LUW GVCP-EBFB-GMKM-24E4-140-R18-Z	LUW GVCP-EBFB-GMKM-24E4
LUW G5GP	Q65111A0387	LUW G5GP-GZHY-6E7G-0-100-R18-Z-XX	LUW G5GP-GZHY-6E7G-Z-XX	LUW GVCP	Q65111A6900	LUW GVCP-EBFB-GMKM-24E4-140-R18-Z	LUW GVCP-EBFB-GMKM-24E4
LUW G5GP	Q65111A0726	LUW G5GP-GZHX-5C6E-0-100-R18-Z-LM	LUW G5GP-GZHX-5C6E-Z-LM	LUW GVCP	Q65111A6900	LUW GVCP-EBFB-GMKM-24E4-140-R18-Z	LUW GVCP-EBFB-GMKM-24E4
LUW G5GP	Q65111A0932	LUW G5GP-GYHX-5D8G-0-100-R18-Z	LUW G5GP-GYHX-5D8G-Z	LUW GVCP	Q65111A6900	LUW GVCP-EBFB-GMKM-24E4-140-R18-Z	LUW GVCP-EBFB-GMKM-24E4
LUW G5GP	Q65111A1449	LUW G5GP-GZHY-7E8F-0-100-R18-Z-XX	LUW G5GP-GZHY-7E8F-Z-XX	LUW GVCP	Q65111A6900	LUW GVCP-EBFB-GMKM-24E4-140-R18-Z	LUW GVCP-EBFB-GMKM-24E4
LUW G5GP	Q65111A1520	LUW G5GP-GZHX-5E8G-0-100-R18-Z-XX	LUW G5GP-GZHX-5E8G-Z-XX	LUW GVCP	Q65111A6900	LUW GVCP-EBFB-GMKM-24E4-140-R18-Z	LUW GVCP-EBFB-GMKM-24E4
LUW G5GP	Q65111A1538	LUW G5GP-GXHY-5C6D-0-100-R18-Z-M	LUW G5GP-GXHY-5C6D-Z-M	LUW GVCP	Q65111A6900	LUW GVCP-EBFB-GMKM-24E4-140-R18-Z	LUW GVCP-EBFB-GMKM-24E4

**DISCONTINUED**

**NEW (REPLACEMENT)**

<i>Product</i>	<i>QNumber</i>	<i>QNumber Description</i>	<i>Part Number</i>	<i>Product</i>	<i>QNumber</i>	<i>QNumber Description</i>	<i>Part Number</i>
LWU G5GP	Q65111A1692	LWU G5GP-GYHY-5C8E-0-100-R18-Z-LM	LWU G5GP-GYHY-5C8E-LM	LWU GVCP	Q65111A6900	LWU GVCP-EBFB-GMKM-24E4-140-R18-Z	LWU GVCP-EBFB-GMKM-24E4
LWU G5GP	Q65111A3218	LWU G5GP-GYHY-6E7F-0-100-R18-Z-XX	LWU G5GP-GYHY-6E7F-XX	LWU GVCP	Q65111A6900	LWU GVCP-EBFB-GMKM-24E4-140-R18-Z	LWU GVCP-EBFB-GMKM-24E4
LWU G5GP	Q65111A3894	LWU G5GP-GYHY-67E-0-100-R18-Z-XX	LWU G5GP-GYHY-67E-Z-XX	LWU GVCP	Q65111A6900	LWU GVCP-EBFB-GMKM-24E4-140-R18-Z	LWU GVCP-EBFB-GMKM-24E4
LWU G5GP	Q65111A3913	LWU G5GP-GYHX-6D7G-0-100-Z-CK	LWU G5GP-GYHX-6D7G-Z-CK	LWU GVCP	Q65111A6900	LWU GVCP-EBFB-GMKM-24E4-140-R18-Z	LWU GVCP-EBFB-GMKM-24E4
LWU G5GP	Q65111A5472	LWU G5GP-GZHX-7D8F-0-100-R18-Z-IND	LWU G5GP-GZHX-7D8F-IND	LWU GVCP	Q65111A6900	LWU GVCP-EBFB-GMKM-24E4-140-R18-Z	LWU GVCP-EBFB-GMKM-24E4
LWU W5SM	Q65110A9716	LWU W5SM-KYLX-7P7Q-1-350-R18-Z	LWU W5SM-KYLX-7P7Q-Z	LWU HWQP	Q65112A6099	LWU HWQP-5N8N-ebvF46fcbB46-8E8H-1A-S	
LWU W5SM	Q65110A9716	LWU W5SM-KYLX-7P7Q-1-350-R18-Z	LWU W5SM-KYLX-7P7Q-Z	KW DMLS33.	Q65112A3699	KW DMLS33.SG-Z6M7-ebvFfcbB46-8E8G-700	
LWU W5SM	Q65111A0426	LWU W5SM-KYLX-5E8F-1-350-R18-Z-BSH	LWU W5SM-KYLX-5E8F-1-Z-BSH	KW DMLS33.	Q65112A3699	KW DMLS33.SG-Z6M7-ebvFfcbB46-8E8G-700	
LWU W5SM	Q65111A0426	LWU W5SM-KYLX-5E8F-1-350-R18-Z-BSH	LWU W5SM-KYLX-5E8F-1-Z-BSH	LWU HWQP	Q65112A6099	LWU HWQP-5N8N-ebvF46fcbB46-8E8H-1A-S	
LWU W5SM	Q65111A2585	LWU W5SM-KXLX-5P7R-1-350-R18-Z	LWU W5SM-KXLX-5P7R-1	KW DMLS33.	Q65112A3699	KW DMLS33.SG-Z6M7-ebvFfcbB46-8E8G-700	
LWU W5SM	Q65111A2585	LWU W5SM-KXLX-5P7R-1-350-R18-Z	LWU W5SM-KXLX-5P7R-1	LWU HWQP	Q65112A6099	LWU HWQP-5N8N-ebvF46fcbB46-8E8H-1A-S	
LWU W5SM	Q65111A2952	LWU W5SM-KZLY-6P7Q-0-350-R18-VL	LWU W5SM-KZLY-6P7Q-VL	LWU HWQP	Q65112A6099	LWU HWQP-5N8N-ebvF46fcbB46-8E8H-1A-S	
LWU W5SM	Q65111A2952	LWU W5SM-KZLY-6P7Q-0-350-R18-VL	LWU W5SM-KZLY-6P7Q-VL	KW DMLS33.	Q65112A3699	KW DMLS33.SG-Z6M7-ebvFfcbB46-8E8G-700	
LWU W5SM	Q65112A0246	LWU W5SM-KYLX-5P7R-24E4-350-R18-Z	LWU W5SM-KYLX-5P7R-24E4	KW DMLS33.	Q65112A3699	KW DMLS33.SG-Z6M7-ebvFfcbB46-8E8G-700	
LWU W5SM	Q65112A0246	LWU W5SM-KYLX-5P7R-24E4-350-R18-Z	LWU W5SM-KYLX-5P7R-24E4	LWU HWQP	Q65112A6099	LWU HWQP-5N8N-ebvF46fcbB46-8E8H-1A-S	
LWU W5SM	Q65112A3986	LWU W5SM-KYLX-5D7E-1-350-R33-Z-BSH		LWU HWQP	Q65112A6099	LWU HWQP-5N8N-ebvF46fcbB46-8E8H-1A-S	
LWU W5SM	Q65112A3986	LWU W5SM-KYLX-5D7E-1-350-R33-Z-BSH		KW DMLS33.	Q65112A3699	KW DMLS33.SG-Z6M7-ebvFfcbB46-8E8G-700	
LWU W5SM	Q65112A5355	LWU W5SM-KYLX-5P6R-24E4-350-S-Z		KW DMLS33.	Q65112A3699	KW DMLS33.SG-Z6M7-ebvFfcbB46-8E8G-700	
LWU W5SM	Q65112A5355	LWU W5SM-KYLX-5P6R-24E4-350-S-Z		LWU HWQP	Q65112A6099	LWU HWQP-5N8N-ebvF46fcbB46-8E8H-1A-S	
LWU W5SM	Q65112A5728	LWU W5SM-KZLY-7Q-1-350-R18-Z-AL		KW DMLS33.	Q65112A3699	KW DMLS33.SG-Z6M7-ebvFfcbB46-8E8G-700	
LWU W5SM	Q65112A5728	LWU W5SM-KZLY-7Q-1-350-R18-Z-AL		LWU HWQP	Q65112A6099	LWU HWQP-5N8N-ebvF46fcbB46-8E8H-1A-S	
LWU W5SM	Q65112A6979	LWU W5SM-KYLX-5E7F-24E4-350-R18-Z-VL		LWU HWQP	Q65112A6099	LWU HWQP-5N8N-ebvF46fcbB46-8E8H-1A-S	
LWU W5SM	Q65112A6979	LWU W5SM-KYLX-5E7F-24E4-350-R18-Z-VL		KW DMLS33.	Q65112A3699	KW DMLS33.SG-Z6M7-ebvFfcbB46-8E8G-700	
LWU W5SM	Q65112A9000	LWU W5SM-KZLY-5P7R-24E4-350-R18-Z-XX		LWU HWQP	Q65112A6099	LWU HWQP-5N8N-ebvF46fcbB46-8E8H-1A-S	
LWU W5SM	Q65112A9000	LWU W5SM-KZLY-5P7R-24E4-350-R18-Z-XX		KW DMLS33.	Q65112A3699	KW DMLS33.SG-Z6M7-ebvFfcbB46-8E8G-700	
LW E6SC	Q65110A1157	LW E6SC-U2AA-5K8L-1-30-R18-Z	LW E6SC-U2AA-5K8L-1-Z	LW ETSG	Q65111A0196	LW ETSG-AABB-JKPL-1-30-R18-Z	LW ETSG-AABB-JKPL-1-Z
LW E6SC	Q65110A1157	LW E6SC-U2AA-5K8L-1-30-R18-Z	LW E6SC-U2AA-5K8L-1-Z	LW E6SG	Q65112A2036	LW E6SG-AABB-JKPL-46-30-R18-Z	LW E6SG-AABB-JKPL-46-Z
LW E6SC	Q65110A2598	LW E6SC-U1V1-5K8L-1-30-R18-Z	LW E6SC-U1V1-5K8L-1-Z	LW ETSG	Q65111A0196	LW ETSG-AABB-JKPL-1-30-R18-Z	LW ETSG-AABB-JKPL-1-Z
LW E6SC	Q65110A2598	LW E6SC-U1V1-5K8L-1-30-R18-Z	LW E6SC-U1V1-5K8L-1-Z	LW E6SG	Q65112A2036	LW E6SG-AABB-JKPL-46-30-R18-Z	LW E6SG-AABB-JKPL-46-Z
LW E6SC	Q65110A2746	LW E6SC-U2V2-5K5L-1-30-R18-Z-B	LW E6SC-U2V2-5K5L-Z	LW E6SG	Q65112A2036	LW E6SG-AABB-JKPL-46-30-R18-Z	LW E6SG-AABB-JKPL-46-Z
LW E6SC	Q65110A2746	LW E6SC-U2V2-5K5L-1-30-R18-Z-B	LW E6SC-U2V2-5K5L-Z	LW ETSG	Q65111A0196	LW ETSG-AABB-JKPL-1-30-R18-Z	LW ETSG-AABB-JKPL-1-Z
LW E6SC	Q65110A3028	LW E6SC-U2V2-56L-1-30-R18-Z	LW E6SC-U2V2-56L-Z	LW ETSG	Q65111A0196	LW ETSG-AABB-JKPL-1-30-R18-Z	LW ETSG-AABB-JKPL-1-Z
LW E6SC	Q65110A3028	LW E6SC-U2V2-56L-1-30-R18-Z	LW E6SC-U2V2-56L-Z	LW E6SG	Q65112A2036	LW E6SG-AABB-JKPL-46-30-R18-Z	LW E6SG-AABB-JKPL-46-Z
LW E6SC	Q65110A3187	LW E6SC-U2V2-6K7L-1-30-R18-Z	LW E6SC-U2V2-6K7L-Z	LW E6SG	Q65112A2036	LW E6SG-AABB-JKPL-46-30-R18-Z	LW E6SG-AABB-JKPL-46-Z
LW E6SC	Q65110A3187	LW E6SC-U2V2-6K7L-1-30-R18-Z	LW E6SC-U2V2-6K7L-Z	LW ETSG	Q65111A0196	LW ETSG-AABB-JKPL-1-30-R18-Z	LW ETSG-AABB-JKPL-1-Z
LW E6SC	Q65110A3298	LW E6SC-U2V2-6K6L-1-30-R18-Z	LW E6SC-U2V2-6K6L-Z	LW ETSG	Q65111A0196	LW ETSG-AABB-JKPL-1-30-R18-Z	LW ETSG-AABB-JKPL-1-Z
LW E6SC	Q65110A3298	LW E6SC-U2V2-6K6L-1-30-R18-Z	LW E6SC-U2V2-6K6L-Z	LW E6SG	Q65112A2036	LW E6SG-AABB-JKPL-46-30-R18-Z	LW E6SG-AABB-JKPL-46-Z
LW E6SC	Q65110A5073	LW E6SC-U2AA-7L8L-34-30-R18-Z-HE	LW E6SC-U2AA-7L8L-34-Z-HE	LW ETSG	Q65111A0196	LW ETSG-AABB-JKPL-1-30-R18-Z	LW ETSG-AABB-JKPL-1-Z
LW E6SC	Q65110A5073	LW E6SC-U2AA-7L8L-34-30-R18-Z-HE	LW E6SC-U2AA-7L8L-34-Z-HE	LW E6SG	Q65112A2036	LW E6SG-AABB-JKPL-46-30-R18-Z	LW E6SG-AABB-JKPL-46-Z
LW E6SC	Q65110A5411	LW E6SC-U2V2-5L-1-30-R18-Z	LW E6SC-U2V2-5L-1-Z	LW E6SG	Q65112A2036	LW E6SG-AABB-JKPL-46-30-R18-Z	LW E6SG-AABB-JKPL-46-Z
LW E6SC	Q65110A5411	LW E6SC-U2V2-5L-1-30-R18-Z	LW E6SC-U2V2-5L-1-Z	LW ETSG	Q65111A0196	LW ETSG-AABB-JKPL-1-30-R18-Z	LW ETSG-AABB-JKPL-1-Z
LW E6SC	Q65110A5784	LW E6SC-U2V2-KA-1-30-R18-Z	LW E6SC-U2V2-KA-1-Z	LW E6SG	Q65112A2036	LW E6SG-AABB-JKPL-46-30-R18-Z	LW E6SG-AABB-JKPL-46-Z
LW E6SC	Q65110A5784	LW E6SC-U2V2-KA-1-30-R18-Z	LW E6SC-U2V2-KA-1-Z	LW ETSG	Q65111A0196	LW ETSG-AABB-JKPL-1-30-R18-Z	LW ETSG-AABB-JKPL-1-Z
LW E6SC	Q65110A6666	LW E6SC-V1AA-8K8L-34-30-R18-Z-HE	LW E6SC-V1AA-8K8L-34-Z-HE	LW ETSG	Q65111A0196	LW ETSG-AABB-JKPL-1-30-R18-Z	LW ETSG-AABB-JKPL-1-Z

**DISCONTINUED**

**NEW (REPLACEMENT)**

<b>Product</b>	<b>QNumber</b>	<b>QNumber Description</b>	<b>Part Number</b>	<b>Product</b>	<b>QNumber</b>	<b>QNumber Description</b>	<b>Part Number</b>
LW E6SC	Q65110A6666	LW E6SC-V1AA-8K8L-34-30-R18-Z-HE	LW E6SC-V1AA-8K8L-34-Z-HE	LW E6SG	Q65112A2036	LW E6SG-AABB-JKPL-46-30-R18-Z	LW E6SG-AABB-JKPL-46-Z
LW E6SC	Q65110A6864	LW E6SC-U2AA-7K8K-1-30-R18-Z	LW E6SC-U2AA-7K8K-1-Z	LW ETSG	Q65111A0196	LW ETSG-AABB-JKPL-1-30-R18-Z	LW ETSG-AABB-JKPL-1-Z
LW E6SC	Q65110A6864	LW E6SC-U2AA-7K8K-1-30-R18-Z	LW E6SC-U2AA-7K8K-1-Z	LW E6SG	Q65112A2036	LW E6SG-AABB-JKPL-46-30-R18-Z	LW E6SG-AABB-JKPL-46-Z
LW E6SC	Q65110A6880	LW E6SC-U2V2-KA-34-30-R18-ZH	LW E6SC-U2V2-KA-34-ZH	LW E6SG	Q65112A2036	LW E6SG-AABB-JKPL-46-30-R18-Z	LW E6SG-AABB-JKPL-46-Z
LW E6SC	Q65110A6880	LW E6SC-U2V2-KA-34-30-R18-ZH	LW E6SC-U2V2-KA-34-ZH	LW ETSG	Q65111A0196	LW ETSG-AABB-JKPL-1-30-R18-Z	LW ETSG-AABB-JKPL-1-Z
LW E6SC	Q65110A6881	LW E6SC-U2V2-KB-34-30-R18-ZH	LW E6SC-U2V2-KB-34-ZH	LW E6SG	Q65112A2036	LW E6SG-AABB-JKPL-46-30-R18-Z	LW E6SG-AABB-JKPL-46-Z
LW E6SC	Q65110A6881	LW E6SC-U2V2-KB-34-30-R18-ZH	LW E6SC-U2V2-KB-34-ZH	LW ETSG	Q65111A0196	LW ETSG-AABB-JKPL-1-30-R18-Z	LW ETSG-AABB-JKPL-1-Z
LW E6SC	Q65110A7397	LW E6SC-U2V2-5K5L-34-30-R33-Z	LW E6SC-U2V2-5K5L-34-L-Z	LW ETSG	Q65111A0196	LW ETSG-AABB-JKPL-1-30-R18-Z	LW ETSG-AABB-JKPL-1-Z
LW E6SC	Q65110A7397	LW E6SC-U2V2-5K5L-34-30-R33-Z	LW E6SC-U2V2-5K5L-34-L-Z	LW E6SG	Q65112A2036	LW E6SG-AABB-JKPL-46-30-R18-Z	LW E6SG-AABB-JKPL-46-Z
LW E6SC	Q65110A7449	LW E6SC-V1AA-5K6K-34-30-R33-Z-JC	LW E6SC-V1AA-5K6K-34-L-Z-JC	LW E6SG	Q65112A2036	LW E6SG-AABB-JKPL-46-30-R18-Z	LW E6SG-AABB-JKPL-46-Z
LW E6SC	Q65110A7449	LW E6SC-V1AA-5K6K-34-30-R33-Z-JC	LW E6SC-V1AA-5K6K-34-L-Z-JC	LW ETSG	Q65111A0196	LW ETSG-AABB-JKPL-1-30-R18-Z	LW ETSG-AABB-JKPL-1-Z
LW E6SC	Q65110A7586	LW E6SC-U2AA-7K7L-1-30-R18-Z	LW E6SC-U2AA-7K7L-Z	LW E6SG	Q65112A2036	LW E6SG-AABB-JKPL-46-30-R18-Z	LW E6SG-AABB-JKPL-46-Z
LW E6SC	Q65110A7586	LW E6SC-U2AA-7K7L-1-30-R18-Z	LW E6SC-U2AA-7K7L-Z	LW ETSG	Q65111A0196	LW ETSG-AABB-JKPL-1-30-R18-Z	LW ETSG-AABB-JKPL-1-Z
LW E6SC	Q65110A7615	LW E6SC-U2V2-8K8L-1-30-R18-Z-XX	LW E6SC-U2V2-8K8L-1-Z-XX	LW E6SG	Q65112A2036	LW E6SG-AABB-JKPL-46-30-R18-Z	LW E6SG-AABB-JKPL-46-Z
LW E6SC	Q65110A7615	LW E6SC-U2V2-8K8L-1-30-R18-Z-XX	LW E6SC-U2V2-8K8L-1-Z-XX	LW ETSG	Q65111A0196	LW ETSG-AABB-JKPL-1-30-R18-Z	LW ETSG-AABB-JKPL-1-Z
LW E6SC	Q65110A8022	LW E6SC-U2V2-6K7L-1-30-R33-Z	LW E6SC-U2V2-6K7L-1-L-Z	LW ETSG	Q65111A0196	LW ETSG-AABB-JKPL-1-30-R18-Z	LW ETSG-AABB-JKPL-1-Z
LW E6SC	Q65110A8022	LW E6SC-U2V2-6K7L-1-30-R33-Z	LW E6SC-U2V2-6K7L-1-L-Z	LW E6SG	Q65112A2036	LW E6SG-AABB-JKPL-46-30-R18-Z	LW E6SG-AABB-JKPL-46-Z
LW E6SC	Q65110A8058	LW E6SC-U1V2-5K7K-34-30-R18-Z	LW E6SC-U1V2-5K7K-34-Z	LW ETSG	Q65111A0196	LW ETSG-AABB-JKPL-1-30-R18-Z	LW ETSG-AABB-JKPL-1-Z
LW E6SC	Q65110A8058	LW E6SC-U1V2-5K7K-34-30-R18-Z	LW E6SC-U1V2-5K7K-34-Z	LW E6SG	Q65112A2036	LW E6SG-AABB-JKPL-46-30-R18-Z	LW E6SG-AABB-JKPL-46-Z
LW E6SC	Q65110A8574	LW E6SC-V1V2-6K6L-1-30-R18-Z	LW E6SC-V1AA-6K6L-1-Z	LW ETSG	Q65111A0196	LW ETSG-AABB-JKPL-1-30-R18-Z	LW ETSG-AABB-JKPL-1-Z
LW E6SC	Q65110A8574	LW E6SC-V1V2-6K6L-1-30-R18-Z	LW E6SC-V1AA-6K6L-1-Z	LW E6SG	Q65112A2036	LW E6SG-AABB-JKPL-46-30-R18-Z	LW E6SG-AABB-JKPL-46-Z
LW E6SC	Q65110A8716	LW E6SC-U2V2-7K8K-34-30-R18-Z-HE	LW E6SC-U2V2-7K8K-34-Z-HE	LW E6SG	Q65112A2036	LW E6SG-AABB-JKPL-46-30-R18-Z	LW E6SG-AABB-JKPL-46-Z
LW E6SC	Q65110A8716	LW E6SC-U2V2-7K8K-34-30-R18-Z-HE	LW E6SC-U2V2-7K8K-34-Z-HE	LW ETSG	Q65111A0196	LW ETSG-AABB-JKPL-1-30-R18-Z	LW ETSG-AABB-JKPL-1-Z
LW E6SC	Q65110A8864	LW E6SC-U1V2-5K8L-34-30-R18-Z	LW E6SC-U1V2-5K8L-34-Z	LW E6SG	Q65112A2036	LW E6SG-AABB-JKPL-46-30-R18-Z	LW E6SG-AABB-JKPL-46-Z
LW E6SC	Q65110A8864	LW E6SC-U1V2-5K8L-34-30-R18-Z	LW E6SC-U1V2-5K8L-34-Z	LW ETSG	Q65111A0196	LW ETSG-AABB-JKPL-1-30-R18-Z	LW ETSG-AABB-JKPL-1-Z
LW E6SC	Q65110A8917	LW E6SC-U2V2-6K6L-34-30-R18-Z	LW E6SC-U2V2-6K6L-34-Z	LW ETSG	Q65111A0196	LW ETSG-AABB-JKPL-1-30-R18-Z	LW ETSG-AABB-JKPL-1-Z
LW E6SC	Q65110A8917	LW E6SC-U2V2-6K6L-34-30-R18-Z	LW E6SC-U2V2-6K6L-34-Z	LW E6SG	Q65112A2036	LW E6SG-AABB-JKPL-46-30-R18-Z	LW E6SG-AABB-JKPL-46-Z
LW E6SC	Q65111A0474	LW E6SC-U2V2-6L-1-30-R18-Z-XX	LW E6SC-U2V2-6L-1-Z-XX	LW ETSG	Q65111A0196	LW ETSG-AABB-JKPL-1-30-R18-Z	LW ETSG-AABB-JKPL-1-Z
LW E6SC	Q65111A0474	LW E6SC-U2V2-6L-1-30-R18-Z-XX	LW E6SC-U2V2-6L-1-Z-XX	LW E6SG	Q65112A2036	LW E6SG-AABB-JKPL-46-30-R18-Z	LW E6SG-AABB-JKPL-46-Z
LW E6SC	Q65112A0665	LW E6SC-U2V2-8K8L-34-30-R18-Z-HE	LW E6SC-U2V2-8K8L-34-Z-HE	LW E6SG	Q65112A2036	LW E6SG-AABB-JKPL-46-30-R18-Z	LW E6SG-AABB-JKPL-46-Z
LW E6SC	Q65112A0665	LW E6SC-U2V2-8K8L-34-30-R18-Z-HE	LW E6SC-U2V2-8K8L-34-Z-HE	LW ETSG	Q65111A0196	LW ETSG-AABB-JKPL-1-30-R18-Z	LW ETSG-AABB-JKPL-1-Z
LW W5SM	Q65110A8050	LW W5SM-JZKY-4H6J-1-350-R18-ZG-HE	LW W5SM-JZKY-4H6J-ZG-HE	KW DMLS33.	Q65112A3699	KW DMLS33.SG-Z6M7-ebvFfcbB46-8E8G-700	
LW W5SM	Q65110A8050	LW W5SM-JZKY-4H6J-1-350-R18-ZG-HE	LW W5SM-JZKY-4H6J-ZG-HE	LUW HWQP	Q65112A6099	LUW HWQP-5N8N-ebvF46fcbB46-8E8H-1A-S	
LW W5SM	Q65110A8052	LW W5SM-KXKZ-3H8J-1-350-R18-ZG-HE	LW W5SM-KXKZ-3H8J-ZG-HE	LUW HWQP	Q65112A6099	LUW HWQP-5N8N-ebvF46fcbB46-8E8H-1A-S	
LW W5SM	Q65110A8052	LW W5SM-KXKZ-3H8J-1-350-R18-ZG-HE	LW W5SM-KXKZ-3H8J-ZG-HE	KW DMLS33.	Q65112A3699	KW DMLS33.SG-Z6M7-ebvFfcbB46-8E8G-700	
LW W5SM	Q65110A8053	LW W5SM-JZKY-5H6J-1-350-R18-ZG-HE	LW W5SM-JZKY-5H6J-ZG-HE	KW DMLS33.	Q65112A3699	KW DMLS33.SG-Z6M7-ebvFfcbB46-8E8G-700	
LW W5SM	Q65110A8053	LW W5SM-JZKY-5H6J-1-350-R18-ZG-HE	LW W5SM-JZKY-5H6J-ZG-HE	LUW HWQP	Q65112A6099	LUW HWQP-5N8N-ebvF46fcbB46-8E8H-1A-S	
LW W5SM	Q65110A8759	LW W5SM-KXKY-3D4E-1-350-R18-ZG-AL	LW W5SM-KXKY-3D4E-1-ZGAL	LUW HWQP	Q65112A6099	LUW HWQP-5N8N-ebvF46fcbB46-8E8H-1A-S	
LW W5SM	Q65110A8759	LW W5SM-KXKY-3D4E-1-350-R18-ZG-AL	LW W5SM-KXKY-3D4E-1-ZGAL	KW DMLS33.	Q65112A3699	KW DMLS33.SG-Z6M7-ebvFfcbB46-8E8G-700	
LW W5SM	Q65110A8804	LW W5SM-JZKY-5F6H-1-350-R18-ZG-HE	LW W5SM-JZKY-5F6H-ZG-HE	KW DMLS33.	Q65112A3699	KW DMLS33.SG-Z6M7-ebvFfcbB46-8E8G-700	
LW W5SM	Q65110A8804	LW W5SM-JZKY-5F6H-1-350-R18-ZG-HE	LW W5SM-JZKY-5F6H-ZG-HE	LUW HWQP	Q65112A6099	LUW HWQP-5N8N-ebvF46fcbB46-8E8H-1A-S	
LW W5SM	Q65110A9186	LW W5SM-JYKY-NOK-1-350-R18-ZG-HE	LW W5SM-JYKY-NOK-1-ZG-HE	KW DMLS33.	Q65112A3699	KW DMLS33.SG-Z6M7-ebvFfcbB46-8E8G-700	
LW W5SM	Q65110A9186	LW W5SM-JYKY-NOK-1-350-R18-ZG-HE	LW W5SM-JYKY-NOK-1-ZG-HE	LUW HWQP	Q65112A6099	LUW HWQP-5N8N-ebvF46fcbB46-8E8H-1A-S	
LW W5SM	Q65110A9189	LW W5SM-JZKY-NL-1-350-R18-ZG-XX	LW W5SM-JZKY-NL-1-ZG-XX	KW DMLS33.	Q65112A3699	KW DMLS33.SG-Z6M7-ebvFfcbB46-8E8G-700	



**DISCONTINUED**

**NEW (REPLACEMENT)**

<b>Product</b>	<b>QNumber</b>	<b>QNumber Description</b>	<b>Part Number</b>	<b>Product</b>	<b>QNumber</b>	<b>QNumber Description</b>	<b>Part Number</b>
LW W5SM	Q65110A9189	LW W5SM-JZKY-NL-1-350-R18-ZG-XX	LW W5SM-JZKY-NL-1-ZG-XX	LUW HWQP	Q65112A6099	LUW HWQP-5N8N-ebvF46fcbB46-8E8H-1A-S	
LW W5SM	Q65110A9190	LW W5SM-JZKY-OL-1-350-R18-ZG-XX	LW W5SM-JZKY-OL-1-ZG-XX	KW DMLS33.	Q65112A3699	KW DMLS33.SG-Z6M7-ebvFfcbB46-8E8G-700	
LW W5SM	Q65110A9190	LW W5SM-JZKY-OL-1-350-R18-ZG-XX	LW W5SM-JZKY-OL-1-ZG-XX	LUW HWQP	Q65112A6099	LUW HWQP-5N8N-ebvF46fcbB46-8E8H-1A-S	
LW W5SM	Q65110A9245	LW W5SM-JYKY-LKML-1-350-R18-Z	LW W5SM-JYKY-LKML-1-Z	KW DMLS33.	Q65112A3699	KW DMLS33.SG-Z6M7-ebvFfcbB46-8E8G-700	
LW W5SM	Q65110A9245	LW W5SM-JYKY-LKML-1-350-R18-Z	LW W5SM-JYKY-LKML-1-Z	LUW HWQP	Q65112A6099	LUW HWQP-5N8N-ebvF46fcbB46-8E8H-1A-S	
LW W5SM	Q65110A9296	LW W5SM-JZKY-NOK-1-350-R18-ZG-HE	LW W5SM-JZKY-NOK-1-ZG-HE	LUW HWQP	Q65112A6099	LUW HWQP-5N8N-ebvF46fcbB46-8E8H-1A-S	
LW W5SM	Q65110A9296	LW W5SM-JZKY-NOK-1-350-R18-ZG-HE	LW W5SM-JZKY-NOK-1-ZG-HE	KW DMLS33.	Q65112A3699	KW DMLS33.SG-Z6M7-ebvFfcbB46-8E8G-700	
LW W5SM	Q65110A9506	LW W5SM-JYKY-LKOL-1-350-R18-Z	LW W5SM-JYKY-LKOL-1-Z	KW DMLS33.	Q65112A3699	KW DMLS33.SG-Z6M7-ebvFfcbB46-8E8G-700	
LW W5SM	Q65110A9506	LW W5SM-JYKY-LKOL-1-350-R18-Z	LW W5SM-JYKY-LKOL-1-Z	LUW HWQP	Q65112A6099	LUW HWQP-5N8N-ebvF46fcbB46-8E8H-1A-S	
LW W5SM	Q65110A9879	LW W5SM-KXKZ-NKOL-1-350-R18-ZG-AL	LW W5SM-KXKZ-NKOL-1-ZG-AL	LUW HWQP	Q65112A6099	LUW HWQP-5N8N-ebvF46fcbB46-8E8H-1A-S	
LW W5SM	Q65110A9879	LW W5SM-KXKZ-NKOL-1-350-R18-ZG-AL	LW W5SM-KXKZ-NKOL-1-ZG-AL	KW DMLS33.	Q65112A3699	KW DMLS33.SG-Z6M7-ebvFfcbB46-8E8G-700	
LW W5SM	Q65110A9983	LW W5SM-JZKY-NPK-1-350-R18-ZG-HE	LW W5SM-JZKY-NPK-ZG-1-HE	KW DMLS33.	Q65112A3699	KW DMLS33.SG-Z6M7-ebvFfcbB46-8E8G-700	
LW W5SM	Q65110A9983	LW W5SM-JZKY-NPK-1-350-R18-ZG-HE	LW W5SM-JZKY-NPK-ZG-1-HE	LUW HWQP	Q65112A6099	LUW HWQP-5N8N-ebvF46fcbB46-8E8H-1A-S	
LW W5SM	Q65111A0042	LW W5SM-KYLX-NOK-1-350-R18-Z-XX	LW W5SM-KYLX-NOK-1-Z-XX	LUW HWQP	Q65112A6099	LUW HWQP-5N8N-ebvF46fcbB46-8E8H-1A-S	
LW W5SM	Q65111A0042	LW W5SM-KYLX-NOK-1-350-R18-Z-XX	LW W5SM-KYLX-NOK-1-Z-XX	KW DMLS33.	Q65112A3699	KW DMLS33.SG-Z6M7-ebvFfcbB46-8E8G-700	
LW W5SM	Q65111A0065	LW W5SM-KXKZ-NPK-1-350-R18-ZG-HE	LW W5SM-KXKZ-NPK-ZG-1-HE	LUW HWQP	Q65112A6099	LUW HWQP-5N8N-ebvF46fcbB46-8E8H-1A-S	
LW W5SM	Q65111A0065	LW W5SM-KXKZ-NPK-1-350-R18-ZG-HE	LW W5SM-KXKZ-NPK-ZG-1-HE	KW DMLS33.	Q65112A3699	KW DMLS33.SG-Z6M7-ebvFfcbB46-8E8G-700	
LW W5SM	Q65111A0132	LW W5SM-KXKZ-NOK-1-350-R18-Z	LW W5SM-KXKZ-NOK-1-Z	LUW HWQP	Q65112A6099	LUW HWQP-5N8N-ebvF46fcbB46-8E8H-1A-S	
LW W5SM	Q65111A0132	LW W5SM-KXKZ-NOK-1-350-R18-Z	LW W5SM-KXKZ-NOK-1-Z	KW DMLS33.	Q65112A3699	KW DMLS33.SG-Z6M7-ebvFfcbB46-8E8G-700	
LW W5SM	Q65111A0221	LW W5SM-KXLX-NOK-1-350-R18-Z-AL	LW W5SM-KXLX-NOK-1-Z-AL	KW DMLS33.	Q65112A3699	KW DMLS33.SG-Z6M7-ebvFfcbB46-8E8G-700	
LW W5SM	Q65111A0221	LW W5SM-KXLX-NOK-1-350-R18-Z-AL	LW W5SM-KXLX-NOK-1-Z-AL	LUW HWQP	Q65112A6099	LUW HWQP-5N8N-ebvF46fcbB46-8E8H-1A-S	
LW W5SM	Q65111A0294	LW W5SM-KXLX-KLK-1-350-R18-Z	LW W5SM-KXLX-KLK-Z	LUW HWQP	Q65112A6099	LUW HWQP-5N8N-ebvF46fcbB46-8E8H-1A-S	
LW W5SM	Q65111A0294	LW W5SM-KXLX-KLK-1-350-R18-Z	LW W5SM-KXLX-KLK-Z	KW DMLS33.	Q65112A3699	KW DMLS33.SG-Z6M7-ebvFfcbB46-8E8G-700	
LW W5SM	Q65111A0383	LW W5SM-KXKZ-MNL-1-350-R18-Z	LW W5SM-KXKZ-MNL-1-Z	LUW HWQP	Q65112A6099	LUW HWQP-5N8N-ebvF46fcbB46-8E8H-1A-S	
LW W5SM	Q65111A0383	LW W5SM-KXKZ-MNL-1-350-R18-Z	LW W5SM-KXKZ-MNL-1-Z	KW DMLS33.	Q65112A3699	KW DMLS33.SG-Z6M7-ebvFfcbB46-8E8G-700	
LW W5SM	Q65111A0455	LW W5SM-KXKY-NOL-1-350-R18-Z-XX	LW W5SM-KXKY-NOL-1-Z-XX	LUW HWQP	Q65112A6099	LUW HWQP-5N8N-ebvF46fcbB46-8E8H-1A-S	
LW W5SM	Q65111A0455	LW W5SM-KXKY-NOL-1-350-R18-Z-XX	LW W5SM-KXKY-NOL-1-Z-XX	KW DMLS33.	Q65112A3699	KW DMLS33.SG-Z6M7-ebvFfcbB46-8E8G-700	
LW W5SM	Q65111A0457	LW W5SM-KYLX-NOK-1-350-R18-Z-AL	LW W5SM-KYLX-NOK-1-Z-AL	LUW HWQP	Q65112A6099	LUW HWQP-5N8N-ebvF46fcbB46-8E8H-1A-S	
LW W5SM	Q65111A0457	LW W5SM-KYLX-NOK-1-350-R18-Z-AL	LW W5SM-KYLX-NOK-1-Z-AL	KW DMLS33.	Q65112A3699	KW DMLS33.SG-Z6M7-ebvFfcbB46-8E8G-700	
LW W5SM	Q65111A0529	LW W5SM-KXKZ-OPK-1-350-R18-Z-HE	LW W5SM-KXKZ-OPK-Z-1-HE	KW DMLS33.	Q65112A3699	KW DMLS33.SG-Z6M7-ebvFfcbB46-8E8G-700	
LW W5SM	Q65111A0529	LW W5SM-KXKZ-OPK-1-350-R18-Z-HE	LW W5SM-KXKZ-OPK-Z-1-HE	LUW HWQP	Q65112A6099	LUW HWQP-5N8N-ebvF46fcbB46-8E8H-1A-S	
LW W5SM	Q65111A0668	LW W5SM-KXKZ-MNK-1-350-R18-Z	LW W5SM-KXKZ-MNK-1-Z	KW DMLS33.	Q65112A3699	KW DMLS33.SG-Z6M7-ebvFfcbB46-8E8G-700	
LW W5SM	Q65111A0668	LW W5SM-KXKZ-MNK-1-350-R18-Z	LW W5SM-KXKZ-MNK-1-Z	LUW HWQP	Q65112A6099	LUW HWQP-5N8N-ebvF46fcbB46-8E8H-1A-S	
LW W5SM	Q65111A0934	LW W5SM-KYLX-NOL-1-350-R18-Z-XX	LW W5SM-KYLX-NOL-1-Z-XX	LUW HWQP	Q65112A6099	LUW HWQP-5N8N-ebvF46fcbB46-8E8H-1A-S	
LW W5SM	Q65111A0934	LW W5SM-KYLX-NOL-1-350-R18-Z-XX	LW W5SM-KYLX-NOL-1-Z-XX	KW DMLS33.	Q65112A3699	KW DMLS33.SG-Z6M7-ebvFfcbB46-8E8G-700	
LW W5SM	Q65111A1032	LW W5SM-KXKZ-MK-1-350-R18-Z-XX	LW W5SM-KXKZ-MK-1-Z-XX	LUW HWQP	Q65112A6099	LUW HWQP-5N8N-ebvF46fcbB46-8E8H-1A-S	
LW W5SM	Q65111A1032	LW W5SM-KXKZ-MK-1-350-R18-Z-XX	LW W5SM-KXKZ-MK-1-Z-XX	KW DMLS33.	Q65112A3699	KW DMLS33.SG-Z6M7-ebvFfcbB46-8E8G-700	
LW W5SM	Q65111A1050	LW W5SM-KXKZ-NPK-1-350-R33-ZG-HE	LW W5SM-KXKZ-NPK-1-L-ZG-HE	LUW HWQP	Q65112A6099	LUW HWQP-5N8N-ebvF46fcbB46-8E8H-1A-S	
LW W5SM	Q65111A1050	LW W5SM-KXKZ-NPK-1-350-R33-ZG-HE	LW W5SM-KXKZ-NPK-1-L-ZG-HE	KW DMLS33.	Q65112A3699	KW DMLS33.SG-Z6M7-ebvFfcbB46-8E8G-700	
LW W5SM	Q65111A1058	LW W5SM-KXKZ-NK-1-350-R18-Z-XX	LW W5SM-KXKZ-NK-1-Z-XX	LUW HWQP	Q65112A6099	LUW HWQP-5N8N-ebvF46fcbB46-8E8H-1A-S	
LW W5SM	Q65111A1058	LW W5SM-KXKZ-NK-1-350-R18-Z-XX	LW W5SM-KXKZ-NK-1-Z-XX	KW DMLS33.	Q65112A3699	KW DMLS33.SG-Z6M7-ebvFfcbB46-8E8G-700	
LW W5SM	Q65111A1443	LW W5SM-KYLX-MNK-1-350-R18-Z-XX	LW W5SM-KYLX-MNK-Z-1-XX	LUW HWQP	Q65112A6099	LUW HWQP-5N8N-ebvF46fcbB46-8E8H-1A-S	
LW W5SM	Q65111A1443	LW W5SM-KYLX-MNK-1-350-R18-Z-XX	LW W5SM-KYLX-MNK-Z-1-XX	KW DMLS33.	Q65112A3699	KW DMLS33.SG-Z6M7-ebvFfcbB46-8E8G-700	
LW W5SM	Q65111A2081	LW W5SM-JZKY-NK-1-350-R18-Z-HE	LW W5SM-JZKY-NK-1-Z-HE	KW DMLS33.	Q65112A3699	KW DMLS33.SG-Z6M7-ebvFfcbB46-8E8G-700	

**DISCONTINUED**

**NEW (REPLACEMENT)**

<b>Product</b>	<b>QNumber</b>	<b>QNumber Description</b>	<b>Part Number</b>	<b>Product</b>	<b>QNumber</b>	<b>QNumber Description</b>	<b>Part Number</b>
LW W5SM	Q65111A2081	LW W5SM-JZKY-NK-1-350-R18-Z-HE	LW W5SM-JZKY-NK-1-Z-HE	LWU HWQP	Q65112A6099	LWU HWQP-5N8N-ebvF46fcbB46-8E8H-1A-S	
LW W5SM	Q65111A2174	LW W5SM-KYKZ-MOL-1-350-R18-Z-AL	LW W5SM-KYKZ-MOL-1-Z-AL	LWU HWQP	Q65112A6099	LWU HWQP-5N8N-ebvF46fcbB46-8E8H-1A-S	
LW W5SM	Q65111A2174	LW W5SM-KYKZ-MOL-1-350-R18-Z-AL	LW W5SM-KYKZ-MOL-1-Z-AL	KW DMLS33.	Q65112A3699	KW DMLS33.SG-Z6M7-ebvFfcbB46-8E8G-700	
LW W5SM	Q65111A2329	LW W5SM-JZKY-NK-1-350-R18-Z-XX	LW W5SM-JZKY-NK-1-Z-XX	LWU HWQP	Q65112A6099	LWU HWQP-5N8N-ebvF46fcbB46-8E8H-1A-S	
LW W5SM	Q65111A2329	LW W5SM-JZKY-NK-1-350-R18-Z-XX	LW W5SM-JZKY-NK-1-Z-XX	KW DMLS33.	Q65112A3699	KW DMLS33.SG-Z6M7-ebvFfcbB46-8E8G-700	
LW W5SM	Q65111A2330	LW W5SM-KXKY-NL-1-350-R18-Z-XX	LW W5SM-KXKY-NL-1-Z-XX	KW DMLS33.	Q65112A3699	KW DMLS33.SG-Z6M7-ebvFfcbB46-8E8G-700	
LW W5SM	Q65111A2330	LW W5SM-KXKY-NL-1-350-R18-Z-XX	LW W5SM-KXKY-NL-1-Z-XX	LWU HWQP	Q65112A6099	LWU HWQP-5N8N-ebvF46fcbB46-8E8H-1A-S	
LW W5SM	Q65111A2331	LW W5SM-KYKZ-NL-1-350-R18-Z-XX	LW W5SM-KYKZ-NL-1-Z-XX	LWU HWQP	Q65112A6099	LWU HWQP-5N8N-ebvF46fcbB46-8E8H-1A-S	
LW W5SM	Q65111A2331	LW W5SM-KYKZ-NL-1-350-R18-Z-XX	LW W5SM-KYKZ-NL-1-Z-XX	KW DMLS33.	Q65112A3699	KW DMLS33.SG-Z6M7-ebvFfcbB46-8E8G-700	
LW W5SM	Q65111A2601	LW W5SM-JYKY-JKQL-1-350-R18-Z	LW W5SM-JYKY-JKQL-1	KW DMLS33.	Q65112A3699	KW DMLS33.SG-Z6M7-ebvFfcbB46-8E8G-700	
LW W5SM	Q65111A2601	LW W5SM-JYKY-JKQL-1-350-R18-Z	LW W5SM-JYKY-JKQL-1	LWU HWQP	Q65112A6099	LWU HWQP-5N8N-ebvF46fcbB46-8E8H-1A-S	
LW W5SM	Q65111A2630	LW W5SM-JYKY-NK-1-350-R18-Z-HE	LW W5SM-JYKY-NK-Z-1-HE	KW DMLS33.	Q65112A3699	KW DMLS33.SG-Z6M7-ebvFfcbB46-8E8G-700	
LW W5SM	Q65111A2630	LW W5SM-JYKY-NK-1-350-R18-Z-HE	LW W5SM-JYKY-NK-Z-1-HE	LWU HWQP	Q65112A6099	LWU HWQP-5N8N-ebvF46fcbB46-8E8H-1A-S	
LW W5SM	Q65111A2993	LW W5SM-KXKZ-LL-1-350-R18-Z-AL	LW W5SM-KXKZ-LL-1-Z-AL	LWU HWQP	Q65112A6099	LWU HWQP-5N8N-ebvF46fcbB46-8E8H-1A-S	
LW W5SM	Q65111A2993	LW W5SM-KXKZ-LL-1-350-R18-Z-AL	LW W5SM-KXKZ-LL-1-Z-AL	KW DMLS33.	Q65112A3699	KW DMLS33.SG-Z6M7-ebvFfcbB46-8E8G-700	
LW W5SM	Q65111A3562	LW W5SM-JYKY-PK-1-350-R18-Z-HE	LW W5SM-JYKY-PK-Z-1-HE	LWU HWQP	Q65112A6099	LWU HWQP-5N8N-ebvF46fcbB46-8E8H-1A-S	
LW W5SM	Q65111A3562	LW W5SM-JYKY-PK-1-350-R18-Z-HE	LW W5SM-JYKY-PK-Z-1-HE	KW DMLS33.	Q65112A3699	KW DMLS33.SG-Z6M7-ebvFfcbB46-8E8G-700	
LW W5SM	Q65111A3805	LW W5SM-KXKZ-LNK-1-350-R18-Z-AL	LW W5SM-KXKZ-LNK-1-Z-AL	LWU HWQP	Q65112A6099	LWU HWQP-5N8N-ebvF46fcbB46-8E8H-1A-S	
LW W5SM	Q65111A3805	LW W5SM-KXKZ-LNK-1-350-R18-Z-AL	LW W5SM-KXKZ-LNK-1-Z-AL	KW DMLS33.	Q65112A3699	KW DMLS33.SG-Z6M7-ebvFfcbB46-8E8G-700	
LW W5SM	Q65111A4055	LW W5SM-KYLX-MNK-1-350-R18-Z-VL	LW W5SM-KYLX-MNK-1-Z-VL	KW DMLS33.	Q65112A3699	KW DMLS33.SG-Z6M7-ebvFfcbB46-8E8G-700	
LW W5SM	Q65111A4055	LW W5SM-KYLX-MNK-1-350-R18-Z-VL	LW W5SM-KYLX-MNK-1-Z-VL	LWU HWQP	Q65112A6099	LWU HWQP-5N8N-ebvF46fcbB46-8E8H-1A-S	
LW W5SM	Q65111A4193	LW W5SM-KYLX-NKOK-1-350-R18-Z-AL	LW W5SM-KYLX-NKOK-1-Z-AL	LWU HWQP	Q65112A6099	LWU HWQP-5N8N-ebvF46fcbB46-8E8H-1A-S	
LW W5SM	Q65111A4193	LW W5SM-KYLX-NKOK-1-350-R18-Z-AL	LW W5SM-KYLX-NKOK-1-Z-AL	KW DMLS33.	Q65112A3699	KW DMLS33.SG-Z6M7-ebvFfcbB46-8E8G-700	
LW W5SM	Q65111A6627	LW W5SM-KXKZ-JKQL-1-350-R18-Z	LW W5SM-KXKZ-JKQL-1	LWU HWQP	Q65112A6099	LWU HWQP-5N8N-ebvF46fcbB46-8E8H-1A-S	
LW W5SM	Q65111A6627	LW W5SM-KXKZ-JKQL-1-350-R18-Z	LW W5SM-KXKZ-JKQL-1	KW DMLS33.	Q65112A3699	KW DMLS33.SG-Z6M7-ebvFfcbB46-8E8G-700	
LW W5SM	Q65111A7297	LW W5SM-KXKZ-NOK-1-350-R33-Z-AL	LW W5SM-KXKZ-NOK-1-L-Z-AL	KW DMLS33.	Q65112A3699	KW DMLS33.SG-Z6M7-ebvFfcbB46-8E8G-700	
LW W5SM	Q65111A7297	LW W5SM-KXKZ-NOK-1-350-R33-Z-AL	LW W5SM-KXKZ-NOK-1-L-Z-AL	LWU HWQP	Q65112A6099	LWU HWQP-5N8N-ebvF46fcbB46-8E8H-1A-S	
LW W5SM	Q65111A7397	LW W5SM-KYLX-MKNL-1-350-R18-Z-VL	LW W5SM-KYLX-MKNL-1-Z-VL	LWU HWQP	Q65112A6099	LWU HWQP-5N8N-ebvF46fcbB46-8E8H-1A-S	
LW W5SM	Q65111A7397	LW W5SM-KYLX-MKNL-1-350-R18-Z-VL	LW W5SM-KYLX-MKNL-1-Z-VL	KW DMLS33.	Q65112A3699	KW DMLS33.SG-Z6M7-ebvFfcbB46-8E8G-700	
LW W5SM	Q65111A8469	LW W5SM-KXLX-JKQL-24E4-350-R18-Z	LW W5SM-KXLX-JKQL-24E4	KW DMLS33.	Q65112A3699	KW DMLS33.SG-Z6M7-ebvFfcbB46-8E8G-700	
LW W5SM	Q65111A8469	LW W5SM-KXLX-JKQL-24E4-350-R18-Z	LW W5SM-KXLX-JKQL-24E4	LWU HWQP	Q65112A6099	LWU HWQP-5N8N-ebvF46fcbB46-8E8H-1A-S	
LW W5SM	Q65111A9193	LW W5SM-KXKZ-MKOL-1-350-R18-Z	LW W5SM-KXKZ-MKOL-1-Z	KW DMLS33.	Q65112A3699	KW DMLS33.SG-Z6M7-ebvFfcbB46-8E8G-700	
LW W5SM	Q65111A9193	LW W5SM-KXKZ-MKOL-1-350-R18-Z	LW W5SM-KXKZ-MKOL-1-Z	LWU HWQP	Q65112A6099	LWU HWQP-5N8N-ebvF46fcbB46-8E8H-1A-S	
LW W5SM	Q65112A0714	LW W5SM-KXKZ-NOK-1-350-R18-Z-HE	LW W5SM-KXKZ-NOK-1-Z-HE	KW DMLS33.	Q65112A3699	KW DMLS33.SG-Z6M7-ebvFfcbB46-8E8G-700	
LW W5SM	Q65112A0714	LW W5SM-KXKZ-NOK-1-350-R18-Z-HE	LW W5SM-KXKZ-NOK-1-Z-HE	LWU HWQP	Q65112A6099	LWU HWQP-5N8N-ebvF46fcbB46-8E8H-1A-S	
LW W5SM	Q65112A1696	LW W5SM-JYKY-MNK-0-350-R18-ZG-HE	LW W5SM-JYKY-MNK-ZG-HE	KW DMLS33.	Q65112A3699	KW DMLS33.SG-Z6M7-ebvFfcbB46-8E8G-700	
LW W5SM	Q65112A1696	LW W5SM-JYKY-MNK-0-350-R18-ZG-HE	LW W5SM-JYKY-MNK-ZG-HE	LWU HWQP	Q65112A6099	LWU HWQP-5N8N-ebvF46fcbB46-8E8H-1A-S	
LW W5SM	Q65112A1891	LW W5SM-KXKY-NOK-1-350-R18-Z-XX	LW W5SM-KXKY-NOK-1-XX	LWU HWQP	Q65112A6099	LWU HWQP-5N8N-ebvF46fcbB46-8E8H-1A-S	
LW W5SM	Q65112A1891	LW W5SM-KXKY-NOK-1-350-R18-Z-XX	LW W5SM-KXKY-NOK-1-XX	KW DMLS33.	Q65112A3699	KW DMLS33.SG-Z6M7-ebvFfcbB46-8E8G-700	
LW W5SM	Q65112A2451	LW W5SM-KXKZ-NOK-1-350-R18-Z-AL		LWU HWQP	Q65112A6099	LWU HWQP-5N8N-ebvF46fcbB46-8E8H-1A-S	
LW W5SM	Q65112A2451	LW W5SM-KXKZ-NOK-1-350-R18-Z-AL		KW DMLS33.	Q65112A3699	KW DMLS33.SG-Z6M7-ebvFfcbB46-8E8G-700	
LY G5AP	Q65111A1319	LY G5AP-CZDZ-36-1-100-R18-Z	LY G5AP-CZDZ-36-1-Z	LY G6SP	Q65111A8100	LY G6SP-CBEB-36-3B5A-140-R18-Z	LY G6SP-CBEB-36-3B5A
LY G5AP	Q65111A1320	LY G5AP-CXDX-36-1-100-R18-Z	LY G5AP-CXDX-36-1-Z	LY G6SP	Q65111A8100	LY G6SP-CBEB-36-3B5A-140-R18-Z	LY G6SP-CBEB-36-3B5A
LY G5AP	Q65111A1562	LY G5AP-CZDX-46-1-100-R18-Z-CK	LY G5AP-CZDX-46-1-Z-CK	LY G6SP	Q65111A8100	LY G6SP-CBEB-36-3B5A-140-R18-Z	LY G6SP-CBEB-36-3B5A

**DISCONTINUED**

**NEW (REPLACEMENT)**

<i>Product</i>	<i>QNumber</i>	<i>QNumber Description</i>	<i>Part Number</i>	<i>Product</i>	<i>QNumber</i>	<i>QNumber Description</i>	<i>Part Number</i>
LY G5AP	Q65111A1878	LY G5AP-CYDX-35-1-100-R18-Z	LY G5AP-CYDX-35-1-Z	LY G6SP	Q65111A8100	LY G6SP-CBEB-36-3B5A-140-R18-Z	LY G6SP-CBEB-36-3B5A
LY G5AP	Q65111A3745	LY G5AP-CZDY-56-1-100-R18-Z-XX	LY G5AP-CZDY-56-1-XX	LY G6SP	Q65111A8100	LY G6SP-CBEB-36-3B5A-140-R18-Z	LY G6SP-CBEB-36-3B5A
LY W5SM	Q65110A6403	LY W5SM-HZJY-45-1-400-R18-Z-XX	LY W5SM-HZJY-45-Z-XX	LY H9PP	Q65111A7406	LY H9PP-HZKX-46-1-350-R18-Z	LY H9PP-HZKX-46-1
LY W5SM	Q65110A6403	LY W5SM-HZJY-45-1-400-R18-Z-XX	LY W5SM-HZJY-45-Z-XX	KY DMLS31.	Q65112A0161	KY DMLS31.23-8J7L-46-M3W3-700-R18-Z	KY DMLS31.23-8J7L-46-M3W3
LY W5SM	Q65110A6567	LY W5SM-JXJZ-45-1-400-R18-Z	LY W5SM-JXJZ-45-Z	KY DMLS31.	Q65112A0161	KY DMLS31.23-8J7L-46-M3W3-700-R18-Z	KY DMLS31.23-8J7L-46-M3W3
LY W5SM	Q65110A6567	LY W5SM-JXJZ-45-1-400-R18-Z	LY W5SM-JXJZ-45-Z	LY H9PP	Q65111A7406	LY H9PP-HZKX-46-1-350-R18-Z	LY H9PP-HZKX-46-1
LY W5SM	Q65110A7198	LY W5SM-HYJY-45-1-400-R18-Z	LY W5SM-HYJY-45-1-Z	KY DMLS31.	Q65112A0161	KY DMLS31.23-8J7L-46-M3W3-700-R18-Z	KY DMLS31.23-8J7L-46-M3W3
LY W5SM	Q65110A7198	LY W5SM-HYJY-45-1-400-R18-Z	LY W5SM-HYJY-45-1-Z	LY H9PP	Q65111A7406	LY H9PP-HZKX-46-1-350-R18-Z	LY H9PP-HZKX-46-1
LY W5SM	Q65110A7255	LY W5SM-JXJY-46-1-400-R18-Z-XX	LY W5SM-JXJY-46-1-Z-XX	KY DMLS31.	Q65112A0161	KY DMLS31.23-8J7L-46-M3W3-700-R18-Z	KY DMLS31.23-8J7L-46-M3W3
LY W5SM	Q65110A7255	LY W5SM-JXJY-46-1-400-R18-Z-XX	LY W5SM-JXJY-46-1-Z-XX	LY H9PP	Q65111A7406	LY H9PP-HZKX-46-1-350-R18-Z	LY H9PP-HZKX-46-1
LY W5SM	Q65110A7255	LY W5SM-HZJY-45-1-400-R33-ZG-HE	LY W5SM-HZJY-45-ZG-HE	KY DMLS31.	Q65112A0161	KY DMLS31.23-8J7L-46-M3W3-700-R18-Z	KY DMLS31.23-8J7L-46-M3W3
LY W5SM	Q65110A8016	LY W5SM-HZJY-45-1-400-R33-ZG-HE	LY W5SM-HZJY-45-ZG-HE	LY H9PP	Q65111A7406	LY H9PP-HZKX-46-1-350-R18-Z	LY H9PP-HZKX-46-1
LY W5SM	Q65110A8070	LY W5SM-HZJY-45-1-400-R33-Z-XX	LY W5SM-HZJY-45-L-1-Z-XX	KY DMLS31.	Q65112A0161	KY DMLS31.23-8J7L-46-M3W3-700-R18-Z	KY DMLS31.23-8J7L-46-M3W3
LY W5SM	Q65110A8070	LY W5SM-HZJY-45-1-400-R33-Z-XX	LY W5SM-HZJY-45-L-1-Z-XX	LY H9PP	Q65111A7406	LY H9PP-HZKX-46-1-350-R18-Z	LY H9PP-HZKX-46-1
LY W5SM	Q65110A8071	LY W5SM-JXJZ-45-1-400-R33-Z-XX	LY W5SM-JXJZ-45-L-Z-XX	KY DMLS31.	Q65112A0161	KY DMLS31.23-8J7L-46-M3W3-700-R18-Z	KY DMLS31.23-8J7L-46-M3W3
LY W5SM	Q65110A8071	LY W5SM-JXJZ-45-1-400-R33-Z-XX	LY W5SM-JXJZ-45-L-Z-XX	LY H9PP	Q65111A7406	LY H9PP-HZKX-46-1-350-R18-Z	LY H9PP-HZKX-46-1
LY W5SM	Q65110A8809	LY W5SM-JXJZ-45-1-400-R18-Z-VL	LY W5SM-JXJZ-45-L-Z-VL	KY DMLS31.	Q65112A0161	KY DMLS31.23-8J7L-46-M3W3-700-R18-Z	KY DMLS31.23-8J7L-46-M3W3
LY W5SM	Q65110A8809	LY W5SM-JXJZ-45-1-400-R18-Z-VL	LY W5SM-JXJZ-45-Z-VL	LY H9PP	Q65111A7406	LY H9PP-HZKX-46-1-350-R18-Z	LY H9PP-HZKX-46-1
LY W5SM	Q65110A9073	LY W5SM-HYJY-45-1-400-R33-Z	LY W5SM-HYJY-45-1-L-Z	KY DMLS31.	Q65112A0161	KY DMLS31.23-8J7L-46-M3W3-700-R18-Z	KY DMLS31.23-8J7L-46-M3W3
LY W5SM	Q65110A9073	LY W5SM-HYJY-45-1-400-R33-Z	LY W5SM-HYJY-45-1-L-Z	LY H9PP	Q65111A7406	LY H9PP-HZKX-46-1-350-R18-Z	LY H9PP-HZKX-46-1
LY W5SM	Q65110A9227	LY W5SM-HYJY-46-1-400-R18-Z	LY W5SM-HYJY-46-1-Z	LY H9PP	Q65111A7406	LY H9PP-HZKX-46-1-350-R18-Z	LY H9PP-HZKX-46-1
LY W5SM	Q65110A9227	LY W5SM-HYJY-46-1-400-R18-Z	LY W5SM-HYJY-46-1-Z	KY DMLS31.	Q65112A0161	KY DMLS31.23-8J7L-46-M3W3-700-R18-Z	KY DMLS31.23-8J7L-46-M3W3
LY W5SM	Q65110A9355	LY W5SM-HZJZ-45-1-400-R18-Z	LY W5SM-HZJZ-45-Z	LY H9PP	Q65111A7406	LY H9PP-HZKX-46-1-350-R18-Z	LY H9PP-HZKX-46-1
LY W5SM	Q65110A9355	LY W5SM-HZJZ-45-1-400-R18-Z	LY W5SM-HZJZ-45-Z	KY DMLS31.	Q65112A0161	KY DMLS31.23-8J7L-46-M3W3-700-R18-Z	KY DMLS31.23-8J7L-46-M3W3
LY W5SM	Q65110A9458	LY W5SM-JXJY-36-1-400-R18-Z	LY W5SM-JXJY-36-1-Z	KY DMLS31.	Q65112A0161	KY DMLS31.23-8J7L-46-M3W3-700-R18-Z	KY DMLS31.23-8J7L-46-M3W3
LY W5SM	Q65110A9458	LY W5SM-JXJY-36-1-400-R18-Z	LY W5SM-JXJY-36-1-Z	LY H9PP	Q65111A7406	LY H9PP-HZKX-46-1-350-R18-Z	LY H9PP-HZKX-46-1
LY W5SM	Q65110A9965	LY W5SM-JXJZ-5-1-400-R18-Z-VL	LY W5SM-JXJZ-5-Z-VL	KY DMLS31.	Q65112A0161	KY DMLS31.23-8J7L-46-M3W3-700-R18-Z	KY DMLS31.23-8J7L-46-M3W3
LY W5SM	Q65110A9965	LY W5SM-JXJZ-5-1-400-R18-Z-VL	LY W5SM-JXJZ-5-Z-VL	LY H9PP	Q65111A7406	LY H9PP-HZKX-46-1-350-R18-Z	LY H9PP-HZKX-46-1
LY W5SM	Q65111A0091	LY W5SM-HZJY-45-1-400-R18-ZG-AL	LY W5SM-HZJY-45-1-ZG-AL	KY DMLS31.	Q65112A0161	KY DMLS31.23-8J7L-46-M3W3-700-R18-Z	KY DMLS31.23-8J7L-46-M3W3
LY W5SM	Q65111A0091	LY W5SM-HZJY-45-1-400-R18-ZG-AL	LY W5SM-HZJY-45-1-ZG-AL	LY H9PP	Q65111A7406	LY H9PP-HZKX-46-1-350-R18-Z	LY H9PP-HZKX-46-1
LY W5SM	Q65111A0092	LY W5SM-JXJZ-45-1-400-R18-ZG-AL	LY W5SM-JXJZ-45-1-ZG-AL	KY DMLS31.	Q65112A0161	KY DMLS31.23-8J7L-46-M3W3-700-R18-Z	KY DMLS31.23-8J7L-46-M3W3
LY W5SM	Q65111A0092	LY W5SM-JXJZ-45-1-400-R18-ZG-AL	LY W5SM-JXJZ-45-1-ZG-AL	LY H9PP	Q65111A7406	LY H9PP-HZKX-46-1-350-R18-Z	LY H9PP-HZKX-46-1
LY W5SM	Q65111A0972	LY W5SM-JXJY-45-1-400-R18-Z-XX	LY W5SM-JXJY-45-Z-XX	LY H9PP	Q65111A7406	LY H9PP-HZKX-46-1-350-R18-Z	LY H9PP-HZKX-46-1
LY W5SM	Q65111A0972	LY W5SM-JXJY-45-1-400-R18-Z-XX	LY W5SM-JXJY-45-Z-XX	KY DMLS31.	Q65112A0161	KY DMLS31.23-8J7L-46-M3W3-700-R18-Z	KY DMLS31.23-8J7L-46-M3W3
LY W5SM	Q65111A1057	LY W5SM-HZJZ-5-1-400-R18-Z	LY W5SM-HZJZ-5-1-Z	LY H9PP	Q65111A7406	LY H9PP-HZKX-46-1-350-R18-Z	LY H9PP-HZKX-46-1
LY W5SM	Q65111A1057	LY W5SM-HZJZ-5-1-400-R18-Z	LY W5SM-HZJZ-5-1-Z	KY DMLS31.	Q65112A0161	KY DMLS31.23-8J7L-46-M3W3-700-R18-Z	KY DMLS31.23-8J7L-46-M3W3
LY W5SM	Q65111A2600	LY W5SM-HZJZ-35-1-400-R18-Z	LY W5SM-HZJZ-36-1	LY H9PP	Q65111A7406	LY H9PP-HZKX-46-1-350-R18-Z	LY H9PP-HZKX-46-1
LY W5SM	Q65111A2600	LY W5SM-HZJZ-35-1-400-R18-Z	LY W5SM-HZJZ-36-1	KY DMLS31.	Q65112A0161	KY DMLS31.23-8J7L-46-M3W3-700-R18-Z	KY DMLS31.23-8J7L-46-M3W3
LY W5SM	Q65111A2810	LY W5SM-HZKX-34-1-400-R18-Z-VL	LY W5SM-HZKX-34-1-Z-VL	LY H9PP	Q65111A7406	LY H9PP-HZKX-46-1-350-R18-Z	LY H9PP-HZKX-46-1
LY W5SM	Q65111A2810	LY W5SM-HZKX-34-1-400-R18-Z-VL	LY W5SM-HZKX-34-1-Z-VL	KY DMLS31.	Q65112A0161	KY DMLS31.23-8J7L-46-M3W3-700-R18-Z	KY DMLS31.23-8J7L-46-M3W3
LY W5SM	Q65111A2817	LY W5SM-HZJZ-46-1-400-R18-Z	LY W5SM-HZJZ-46-1	KY DMLS31.	Q65112A0161	KY DMLS31.23-8J7L-46-M3W3-700-R18-Z	KY DMLS31.23-8J7L-46-M3W3
LY W5SM	Q65111A2817	LY W5SM-HZJZ-46-1-400-R18-Z	LY W5SM-HZJZ-46-1	LY H9PP	Q65111A7406	LY H9PP-HZKX-46-1-350-R18-Z	LY H9PP-HZKX-46-1
LY W5SM	Q65111A3755	LY W5SM-JYKX-45-1-400-R18-Z-AL	LY W5SM-JYKX-45-1-Z-AL	LY H9PP	Q65111A7406	LY H9PP-HZKX-46-1-350-R18-Z	LY H9PP-HZKX-46-1
LY W5SM	Q65111A3755	LY W5SM-JYKX-45-1-400-R18-Z-AL	LY W5SM-JYKX-45-1-Z-AL	KY DMLS31.	Q65112A0161	KY DMLS31.23-8J7L-46-M3W3-700-R18-Z	KY DMLS31.23-8J7L-46-M3W3



**DISCONTINUED**

**NEW (REPLACEMENT)**

<i>Product</i>	<i>QNumber</i>	<i>QNumber Description</i>	<i>Part Number</i>	<i>Product</i>	<i>QNumber</i>	<i>QNumber Description</i>	<i>Part Number</i>
LY W5SM	Q65111A4495	LY W5SM-JYKX-45-1-400-R18-Z-ZKW	LY W5SM-JYKX-45-1-Z-ZKW	KY DMLS31.	Q65112A0161	KY DMLS31.23-8J7L-46-M3W3-700-R18-Z	KY DMLS31.23-8J7L-46-M3W3
LY W5SM	Q65111A4495	LY W5SM-JYKX-45-1-400-R18-Z-ZKW	LY W5SM-JYKX-45-1-Z-ZKW	LY H9PP	Q65111A7406	LY H9PP-HZKX-46-1-350-R18-Z	LY H9PP-HZKX-46-1
LY W5SM	Q65111A7540	LY W5SM-JYKX-45-1-400-R18-Z-XX	LY W5SM-JYKX-45-1-Z-XX	LY H9PP	Q65111A7406	LY H9PP-HZKX-46-1-350-R18-Z	LY H9PP-HZKX-46-1
LY W5SM	Q65111A7540	LY W5SM-JYKX-45-1-400-R18-Z-XX	LY W5SM-JYKX-45-1-Z-XX	KY DMLS31.	Q65112A0161	KY DMLS31.23-8J7L-46-M3W3-700-R18-Z	KY DMLS31.23-8J7L-46-M3W3
LY W5SM	Q65112A3894	LY W5SM-HZKX-35-J3T3-400-R18-Z		KY DMLS31.	Q65112A0161	KY DMLS31.23-8J7L-46-M3W3-700-R18-Z	KY DMLS31.23-8J7L-46-M3W3
LY W5SM	Q65112A3894	LY W5SM-HZKX-35-J3T3-400-R18-Z		LY H9PP	Q65111A7406	LY H9PP-HZKX-46-1-350-R18-Z	LY H9PP-HZKX-46-1
LY W5SM	Q65112A3895	LY W5SM-JXKY-46-J3T3-400-R18-Z		KY DMLS31.	Q65112A0161	KY DMLS31.23-8J7L-46-M3W3-700-R18-Z	KY DMLS31.23-8J7L-46-M3W3
LY W5SM	Q65112A3895	LY W5SM-JXKY-46-J3T3-400-R18-Z		LY H9PP	Q65111A7406	LY H9PP-HZKX-46-1-350-R18-Z	LY H9PP-HZKX-46-1
LY W5SM	Q65112A6124	LY W5SM-JXKY-35-1-400-R18-HAN		KY DMLS31.	Q65112A0161	KY DMLS31.23-8J7L-46-M3W3-700-R18-Z	KY DMLS31.23-8J7L-46-M3W3
LY W5SM	Q65112A6124	LY W5SM-JXKY-35-1-400-R18-HAN		LY H9PP	Q65111A7406	LY H9PP-HZKX-46-1-350-R18-Z	LY H9PP-HZKX-46-1
SFH 4232	Q65110A8754	SFH 4232-Z	SFH 4232-Z	SFH 4770S	Q65111A9246	SFH 4770S	SFH 4770S
SFH 4232	Q65110A9707	SFH 4232-DADB-Z	SFH 4232-DADB-Z	SFH 4770S	Q65111A9246	SFH 4770S	SFH 4770S
SFH 4232	Q65111A4380	SFH 4232-DA-XX	SFH 4232-DA-XX	SFH 4770S	Q65111A9246	SFH 4770S	SFH 4770S
SFH 4232	Q65112A4971	SFH 4232-DA C1015		SFH 4770S	Q65111A9246	SFH 4770S	SFH 4770S
SFH 4232 E9	Q65111A0312	SFH 4232 E9563-Z	SFH 4232 E9563-Z	SFH 4770S	Q65111A9246	SFH 4770S	SFH 4770S
SFH 4232A	Q65111A3235	SFH 4232A	SFH 4232A	SFH 4770S	Q65111A9246	SFH 4770S	SFH 4770S
SFH 4232A	Q65111A5199	SFH 4232A-DB	SFH 4232A-DB	SFH 4770S	Q65111A9246	SFH 4770S	SFH 4770S
SFH 4235	Q65110A8900	SFH 4235-Z	SFH 4235-Z	SFH 4770S	Q65111A9246	SFH 4770S	SFH 4770S
SFH 4235	Q65111A9751	SFH 4235-EB-XX	SFH 4235-EB-XX	SFH 4770S	Q65111A9246	SFH 4770S	SFH 4770S
SFH 4235 E9	Q65111A1659	SFH 4235 E9580	SFH 4235 E9580	SFH 4770S	Q65111A9246	SFH 4770S	SFH 4770S